



Queen Mary  
University of London

# Shaping Tomorrow: Crafting your PhD Research to Maximise Impact

Melissa Jhurry

Impact Engagement Officer (FMD)

---

# What is Impact?

**IMPACT = BENEFIT**

# What is Impact?

The contribution, effect on, or benefit that **excellent** research makes to:

Economy



Culture and Society



Health and Welfare



Policy



Services

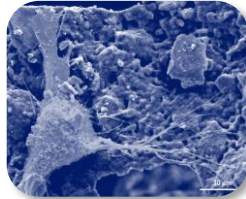


Environment



# Types of Research Impact

# Examples of Impact and Indicators



Hard graft: How Queen Mary research created a landmark range of synthetic bone-graft materials

Dr Karin Hing



Are you listening? Verbatim Theatre gives voice and ear to care leavers

Dr Maggie Inchley



Genetic resistance brings hope for ash trees

Prof Richard Buggs

Main Areas of Impact	<ul style="list-style-type: none"> <li>• Health and wellbeing of people</li> <li>• Commerce and economy</li> </ul>	<ul style="list-style-type: none"> <li>• Health and wellbeing of people</li> <li>• Commerce and economy</li> </ul>	<ul style="list-style-type: none"> <li>• Environment</li> <li>• Policy</li> </ul>
Type of Impacts	<ul style="list-style-type: none"> <li>• Outcome for a patient has improved</li> <li>• Cost of treatment has changed</li> <li>• Spin-out has been created</li> </ul>	<ul style="list-style-type: none"> <li>• New forms of artistic expression resulting in enhancement of quality of life</li> <li>• Improved social welfare</li> </ul>	<ul style="list-style-type: none"> <li>• The environment has been improved through the introduction of a new product</li> <li>• Change in policy</li> </ul>
Indicators of reach and significance	<ul style="list-style-type: none"> <li>• Measure of improved clinical outcomes</li> <li>• Evidence of improved cost-effectiveness</li> <li>• Sales of products</li> </ul>	<ul style="list-style-type: none"> <li>• Participant feedback</li> <li>• Measures of improved social equality, welfare or inclusion</li> </ul>	<ul style="list-style-type: none"> <li>• Verifiable influence on projects which bring environmental benefits</li> <li>• Documented evidence of use in policy debate</li> </ul>

# What to know about impact?

## 1. Beyond academia i.e. not academic impact

## 2. Demonstrable changes

- Interest/understanding/behaviour
- Processes/policies/priorities/recommendations

## 3. Ways impact can be measured

- Reach
- Significance

# Why is Impact important to you?



Maximise Grant Application  
Successes



Research Excellence  
Framework (REF)



Queen Mary's Strategy



Career/Skill Development

# Who's Who in Queen Mary's Impact Team



**Esther Brown**  
Impact Manager



**Melissa Jhurry**  
Impact Engagement  
Officer (FMD)



**Leslie Bolda**  
Impact Engagement  
Officer (S&E)



**Evie Edwards**  
Impact Engagement  
Officer (HSS)



**Maria Morelli**  
Impact Engagement  
Officer (HSS)



**Varant Kurkjian**  
Impact Accelerations  
Accounts Officer



# Impact support at Faculty level

## DVPs for Impact:

**Professor Alison Blunt**, Deputy Vice-Principal for Impact (Culture, Civic & Community)

**Professor David Lee**, Deputy Vice Principal for Impact (Enterprise & Commercial Innovation)

## Faculty of Humanities and Social Sciences:

**Kate Spencer** - Deputy Dean for Research Impact

HSS	English	Matthew Rubery
HSS	Drama	Maggie Inchley
HSS	CCLS	Kamala Dawar
HSS	Law	Ruth Fletcher
HSS	Geography	Sam Halvorsen
HSS	SLLF	Kathleen McCarthy
HSS	Economics	Simon Franklin
HSS	History	James Ellison
HSS	Business and Management	Elena Doldor
HSS	SPIR	James Eastwood

## Faculty of Science and Engineering:

**Peter Thorpe** - Deputy Dean for Research Impact

S&E	Mathematical Sciences	John Moriarty
S&E	SEMS	Oliver Fenwick
S&E	SBBS (Biology)	Andrew Leitch
S&E	SPCS (Chemistry)	Stellios Arseniyadis
S&E	SBBS (Psychology)	Lars Chittka
S&E	EECS	Matthew Purver
S&E	SPCS (Physics)	Anthony Phillips

## Faculty of Medicine and Dentistry:

**Professor Paul Evans** - Dean for Research Impact

FMD	BCI	Jane Sosabowski
FMD	Blizard	Silvia Marino
FMD	Dentistry	Robert Hill
FMD	WHRI	Michelangelo Campanella
FMD	WIPH	Charles Marshall

# Our mission...

## Online Impact Training

<https://qmplus.qmul.ac.uk/course/view.php?id=22938>



Deliver Training



Organise Networking events



Sign up for or our networking mailing lists:



## Impact Forum

<https://forms.office.com/e/HKTMavW0bK>



## Entrepreneurs Club

<https://forms.office.com/e/SKPiakuxpT>

Collaborate with other QMUL Teams



Growing an Impact Culture through capacity building



Support Impact Project



## Applying for IAA funding

<https://www.qmul.ac.uk/research/research-impact/funding-for-knowledge-exchange--impact/queen-mary-impact-fund/applying-to-the-impact-fund/>



Impact Funding



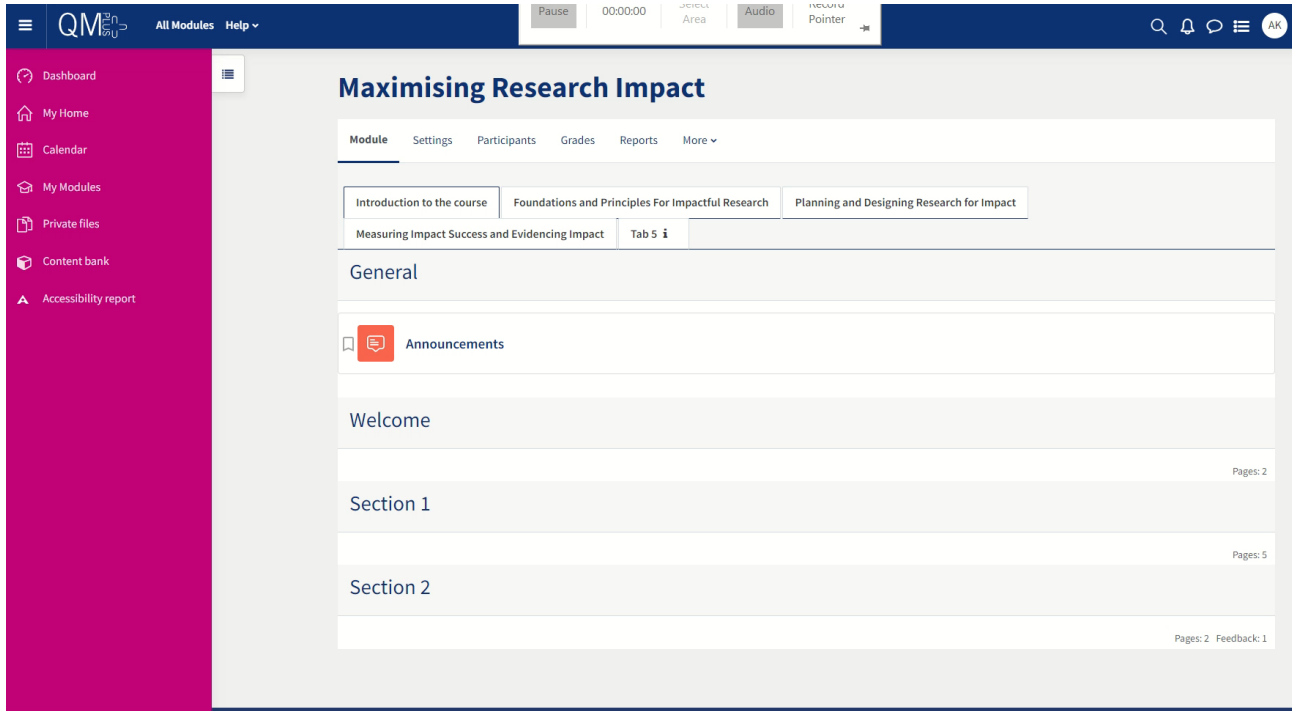
Provide Impact Resources



## Impact Resource Page

<https://qmulprod.sharepoint.com/sites/ImpactResourcePages/SitePages/HOME%20PAGE.aspx>

# Enrol in our online training on QMPlus



The screenshot shows the QMPlus interface for the course 'Maximising Research Impact'. The top navigation bar includes 'All Modules' and 'Help'. The left sidebar lists navigation options: Dashboard, My Home, Calendar, My Modules, Private files, Content bank, and Accessibility report. The main content area features a course title, navigation tabs (Module, Settings, Participants, Grades, Reports, More), and a list of course sections: 'Introduction to the course', 'Foundations and Principles For Impactful Research', 'Planning and Designing Research for Impact', and 'Measuring Impact Success and Evidencing Impact'. Below the sections, there are links for 'Announcements', 'Welcome', 'Section 1', and 'Section 2'. The interface also shows a search bar, a notification bell, and a user profile icon (AK) in the top right corner.



<https://qmplus.qmul.ac.uk/course/view.php?id=22938>

**Thank you!**

**If you have any questions, contact us:**

Queen Mary Impact Team  
[impact@qmul.ac.uk](mailto:impact@qmul.ac.uk)



Impact Resources  
SharePoint



Queen Mary  
University of London