



Queen Mary
University of London

RUSSELL
GROUP

Undergraduate Prospectus **2024**



Contents

**Diverse thinking creates
brilliant breakthroughs**

Find your future at Queen Mary 4

Joining our community	6	Our London campuses	18
Your support network	8	Where you'll live	22
Sports clubs, societies and volunteering opportunities	11	Learning with the best	25
Mariam's story	12		
Life as a student	14	Building your future	26
Where you'll be studying	16	Starting your career journey	28
		Study abroad	31

Discover your passion 32

Foundation programmes	34	Geography	62
		Global Development	64
Subject listings	36	History	66
Biological and Biomedical Sciences	36	Law	68
Business and Management	38	Liberal Arts	70
Chemical Sciences	40	Linguistics	72
Comparative Literature	42	Mathematical Sciences	74
Computer Science and Electronic Engineering	44	Shaun's story	76
Dentistry	46	Medicine	80
Drama	50	Medicine in London	82
Economics and Finance	52	Medicine in Malta	84
Engineering and Materials Science	54	Modern Languages and Cultures	86
English	56	Physics and Astronomy	88
Environmental Science	58	Politics and International Relations	90
Film Studies	60	Psychology	92

Degree programmes 94

Take your first steps 130

How to apply	132	Student finance, bursaries and support	136
Contextual admissions	134	International student admissions	138
Your offer based on individual circumstances		Cara's story	140
Degree apprenticeships	135	Terms and conditions	142

Find your future at Queen Mary

In this chapter:

006 **Joining our community**

014 **Life as a student**

026 **Building your future**

Whitechapel campus
Faculty of Medicine
and Dentistry

The City
London's
financial district

Mile End Library
Open 24 hours

**Mile End
accommodation**
Live, study and
socialise on campus

Mile End Park
Alongside the
Regent's Canal

Joining our community



Canalside
Mile End campus

Welcome to Queen Mary University of London, a Russell Group university like no other. We combine academic excellence with a nurturing and supportive student experience, vibrant city life with the safety of a campus community, and a rich history with a diverse, innovative outlook.

Who we are

Research excellence with an unparalleled commitment to inclusion makes Queen Mary unique. There are currently 170 nationalities represented on our London campuses, and we ranked as the best university in the country for social mobility (The Sutton Trust 2021).

The London advantage

At Queen Mary, you get the safety and security of campus life, while living in one of the most exciting parts of London. Here you'll have access to our state-of-the-art facilities, exceptional teaching and dynamic student community. All our London campuses are well connected,

making it easy to explore the city, the UK or even further afield.

Research excellence

The latest assessment of research among universities (Research Excellence Framework 2021) confirmed our place as one of the UK's top research-intensive universities, ranking joint 7th for the quality of our research. Across the University, 92 per cent of our research has been assessed as internationally excellent or world-leading. From examining accent bias to discovering new planets, Queen Mary is proud to produce research that has an impact at a local, national and global level.

9

Nobel Prize winners

across literature, physics and medicine.



Winner of 'University of the Year' award at the UK Social Mobility Awards 2022.

170

more than **170 nationalities** represented on our London campuses.



Chat to one of our students:
qmul.ac.uk/unibuddy

Your support network

Our student and academic services are here to help you make the most of your time at Queen Mary. You can receive support for academic and course-related queries as well as health and personal issues.

Supporting your study Your Advisor

In your School or Institute, your Advisor is your first point of contact. Usually an academic member of staff, your Advisor's main role is to discuss academic progress, but they can also refer or recommend you to other support services.

Learning support

The Academic Skills Enhancement Service helps students from any taught programme and level of study to achieve academic success at Queen Mary. It supports all aspects of study, including time management, critical thinking and academic writing. Workshops, one-to-one tutorials and drop-ins run throughout the year.

Language Centre

Our students have the opportunity to learn a language alongside their studies, either for credit or as an extracurricular activity. You can choose from

Arabic, Bengali, Chinese, French, German, Italian, Japanese, and Spanish.

You also have access to a range of extracurricular in-session modules in Academic and Professional Communication, which support your academic success and your employment prospects.

PASS

Our Peer-Assisted Study Support scheme (PASS) is a course-based mentoring scheme. It helps first-year students settle into university life by giving them the opportunity to connect with students (mentors) in other years.

Supporting your wellbeing Advice and Counselling Service

Our Advice and Counselling Service offers a range of specialist, professional and confidential services to support students with their finances, welfare, legal issues, emotional and mental health, and other psychological issues.

Disability and Dyslexia Service

Our Disability and Dyslexia Service offers support to all students with disabilities – including specific learning differences like dyslexia and mental health diagnoses – from application through to graduation.

Students' Union Academic Advice Service

This service offers advice and representation on a number of academic welfare issues, including applications for extenuating circumstances and appeals.

Student Health Service

You can access free healthcare via the Student Health Service on our Mile End campus. Students living in Queen Mary accommodation at Mile End or Whitechapel – and any students living in the borough of Tower Hamlets – can register with the service.

Learn more



Advice and
Counselling
Service




Disability
and Dyslexia
Service



Language
Centre



 Mile End Library
Mile End campus



Sports clubs, societies and volunteering opportunities

Whatever your interests, there's something for you at Queen Mary. With more than 200 student societies and more than 60 sports clubs to choose from, there are always opportunities to try something new and meet like-minded people.

Sport

Qmotion, on our Mile End campus, is the Students' Union's sport and fitness centre. The gym contains three floors of state-of-the-art facilities, holds more than 30 group exercise classes a week, and offers additional services such as a personal training, and free personalised training programmes for members.

There are sport and exercise options for every student, and for every level of interest and ability. They're a great way to enrich your university experience and improve your physical and mental wellbeing. Options include:

- Community Foundation: gain qualifications, volunteer and make a difference in the community.
- Get Active: turn up and play on-campus recreational sport,

with 15 different sports to choose from.

- Campus games: compete in fun events and activities to win trophy points for your School.
- Inter-Halls Games: compete in fun events and activities with other students.
- Social leagues: fun and simple sport leagues on or near to campus.
- Club sport: compete for the University in any of our 60+ clubs, with matches taking place at our sports ground in Chislehurst and venues such as the Olympic Park.
- Talented Athlete Programme: get top-level athlete support to help you towards a dual career.

Clubs and societies

Joining a club or society is one of the best ways to meet friends and make the most of your university

experience. From art to politics and student media, there's something for everyone – and if you can't find a club to suit your interests, you can start your own.

Volunteering

Get involved in the local community by volunteering alongside other Queen Mary students. Choose from hundreds of one-off, short-term or ongoing opportunities, make new friends, gain valuable skills and experience, and most importantly – make a difference.

Student voice

Queen Mary Students' Union is your voice as a member of the student body. The Students' Union's mission is to improve students' lives through listening to your feedback and electing students to represent your views.

Learn more



Queen Mary
Students' Union

Initially, **Mariam** wanted to study outside of London, but attending a Queen Mary Open Day changed her mind.

It wasn't just Open Day that made an impression. Mariam was excited by the opportunities her course offered. "Hispanic Studies and Comparative Literature was a good match for me. The modules it involved and the fact I could do a year abroad made me want to go to Queen Mary."

At first, the transition to university took some getting used to. "The most challenging part of my degree was getting used to the workload. But as much as it was challenging it was also rewarding. You learn skills that you can implement in your future career."

Finding a balance between her studies and her hobbies and social life has enriched Mariam's university experience. "I got involved with the Islamic Society, the Book Club, and magazine societies like PEACH and CUB

magazines. I really liked being able to continue with my hobbies and socialise with people alongside my assignments and studying."

As for life after graduation, the Careers and Enterprise service has allowed Mariam to prepare for her professional journey. "I found an internship at a boarding school in Kent teaching foreign languages, so I've got some experience teaching and am able to think about that as a potential career."

Queen Mary has lived up to Mariam's expectations, and what she loves most about it is what drew her to it in the first place. "My favourite aspect is how relaxed the atmosphere is despite being a Russell Group university. You can always talk to your lecturers and meet different people through societies and different events."



Mariam
BA Hispanic Studies and
Comparative Literature,
2nd year

Life as a student



Ground Café
Mile End campus

Our campuses provide a welcoming and vibrant place to learn, with state-of-the-art facilities, exceptional teaching and a dynamic student experience – in the best city in the world to study in.

When it comes to world cities, London has it all: history, food, sport, culture, adventure – and countless career opportunities. East London is one of the most energetic parts of the capital, attracting artists, creatives and tech entrepreneurs from around the world. It's international and bustling – a place where new ideas spring up and exciting things happen. It's also home to some of the best restaurants, nightlife and culture that the city has to offer.

Getting around couldn't be easier. All our London campuses are well connected to the rest of the city, the UK, and further afield. From any campus, you're just a short tube journey away

from Oxford Circus, Leicester Square, King's Cross station, and the rest of London's amazing sights. If you're going abroad, London has fantastic connections to the rest of the world.

What's more, London's cycleways make it easy and safe to cycle to, from, and between our campuses. Cycling is a fun and convenient way to explore the city, including the beautiful parks and canal towpaths close to campus. Our Mile End site is around a 10-minute cycle from the iconic Queen Elizabeth Olympic Park, home to the London Stadium, with the leafy open spaces of the Lee Valley just beyond.



The campus feels like a real community, like a family. It's easy to make friends at Queen Mary – there's always something going on.

David Ajibade,
BSc Biomedical Sciences,
2021



London was ranked best city in the world to study in.

QS Best Student Cities 2022

Where you'll be studying

East London is a vibrant place where rich history meets the cutting edge of culture and innovation.

From our Mile End and Whitechapel campuses, you're just a short walk from Shoreditch and Brick Lane, where you'll find amazing food from all over the world, nightlife and live music to suit any taste, and a wide array of independent shops and galleries.

When you need a break from the hustle and bustle, there's plenty of green space to enjoy. From our Mile End campus, a short walk along the tranquil Regent's Canal brings you to Victoria Park. It's one of inner London's largest green spaces and hosts a weekly food market, as well as music festivals in the summer.

Excellent transport links mean you're never far from the beating heart of London. A short tube ride takes you into the City, London's financial hub and home to iconic landmarks like St. Paul's Cathedral. A few stops beyond is the West End, London's theatre district, where you'll find attractions like Chinatown and Piccadilly Circus.



Regent's Park and London Zoo
40 mins on the London Underground from our Mile End campus

Chinatown
20 mins on the London Underground from our Mile End campus

St James's, Green and Hyde parks
25 mins on the London Underground from our Mile End campus

Big Ben and the Houses of Parliament
20 mins on the London Underground from our Mile End campus

King's Cross
St Pancras

Holborn

Piccadilly
Circus

Westminster

Lincoln's Inn Fields campus

Farringdon

Charterhouse Square and West Smithfield campuses

City of London
10 mins on the London Underground from our Mile End campus

Bank

Tower Bridge
12 mins on the London Underground from our Mile End campus

Elephant
and Castle

Old Street

Bethnal
Green

Whitechapel

Whitechapel campus

Bermondsey

Canada
Water

Surrey
Quays

Victoria Park
20 mins walk from our Mile End campus

Mile End campus

Regent's Canal
By the side of our Mile End campus

Canary Wharf
15 mins by bus from our Mile End campus

Canary
Wharf

The O2 Arena
20 mins on the London Underground from our Mile End campus

Mile End

Bromley-by-Bow

London City Institute of Technology

North
Greenwich

Our London campuses



I worried I'd feel isolated, but Queen Mary completely dispelled that fear. Being at a campus university in London, you always run into somebody you know.

Kate Cornell,
BA History,
2021

Mile End campus

Our self-contained Mile End campus is home to most of our academic Schools and offers everything you need to live, relax and study – including shops, cafés, restaurants and a gym. Student accommodation is just a short walk from lecture theatres and our 24-hour library.

- Mile End station
- Stepney Green station



Explore the virtual tour

Queens' Building
Mile End campus





Whitechapel campus

The Whitechapel campus is where most of our medical and dental students are based. It's also home to the Whitechapel Library, the Barts and The London Students' Association, and The Royal London Hospital.

- 🚇 Whitechapel station
- 🚇 Stepney Green station



Explore the virtual tour



Charterhouse Square campus

Located near the Barbican, Charterhouse Square is home to some of our world-leading Institutes' medical research headquarters. There is also a hall of residence for our medical students.

- 🚇 Barbican station
- 🚇 Farringdon station



Explore the virtual tour



Lincoln's Inn Fields campus

The Postgraduate Law Centre at Lincoln's Inn Fields is home to the Centre for Commercial Law Studies. It's located in Holborn, the heart of legal London, and is a base for LLM teaching and postgraduate research law students.

- 🚇 Holborn station
- 🚇 Chancery Lane station



Explore the virtual tour



West Smithfield campus

The West Smithfield campus in Farringdon is home to some of our postgraduate medical research students. It includes St Bartholomew's Hospital (Barts), the West Smithfield Medical Library, and some of our medical research facilities.

- 🚇 Barbican station
- 🚇 Farringdon station



Explore the virtual tour

Where you'll live

At Queen Mary, you benefit from the safety and community feel of campus life, with all the excitement of London right on your doorstep.

A welcoming community

Our campuses are communities in their own right, bringing together students from many subjects to study and socialise. Our sites in Mile End, Whitechapel, Charterhouse Square and West Smithfield offer almost 3,000 student bedrooms.

Our halls of residence offer a range of affordable options, either on campus or a short distance away. Residential fees start from around £155 per week for a non-ensuite room.

We guarantee accommodation to all new undergraduate and foundation students, as long as you meet the eligibility criteria on our accommodation webpages. Whether you choose to live in halls with other new students or prefer an alternative housing option, our experienced team of housing advisors are here to help you make the right choice.

All of our campus accommodation is in self-catered flats, just a few minutes' walk from everything

you need to get the best out of your degree and your Queen Mary experience. You'll feel at home as part of our friendly community of staff and students.

A peaceful oasis in a busy city

Our self-contained Mile End campus is our largest, and offers everything you need to live, study and relax. Our lecture theatres, laboratories and study spaces – including our extensive 24-hour library – will all be on your doorstep. You'll also have access to the two shops, four cafés, two restaurants, bar, gym, and bookshop on site.

Our halls of residence have a friendly and relaxed atmosphere, surrounded by greenery and attractive outdoor spaces. At times, it's easy to forget that you're living in the heart of a bustling capital city. Campus accommodation is fun, safe and convenient – an affordable way to enjoy London life. It's also a great way to meet new people and create your own community of friends.

Learn more



Accommodation



Our campuses



France House
Mile End campus



Learning with the best

Queen Mary is one of the world's leading research universities, which means you'll be learning from the leaders in their field.

Underpinned by cutting-edge research

Our innovative teaching is inspired by world-leading research. Our educators work at the forefront of their disciplines, and this directly benefits your learning experience – giving you the knowledge and skills you need to succeed.

Building an inclusive curriculum, together

Queen Mary's aim is to be the most inclusive university of its kind, anywhere. When it comes to our teaching, this means empowering students to voice their ideas and opinions, and diversifying our curriculum to help you broaden your intellectual horizons.

We aim to acknowledge and address the inequalities in society by including diverse perspectives and identities in our teaching material – so our programmes are exciting, challenging and relevant.

We co-create our approach to education with our students, as we believe their input helps us ensure our programmes are student-centred and our learning environment is inclusive.

The best of physical and digital education

We continually work with our students to improve our educational offer. The result is an experience that's tailored to you, and makes use of the latest technology to enhance our education approach.

Small active learning groups will provide an opportunity to build up a community of practice, and a supportive network with whom to share approaches. Large group and facilitated sessions – such as tutorials, lab work and seminars – will be interactive. Course material will be available online to enable you to learn at your own pace, revisiting material when you want to, while staying in close and easy contact with other students and our world-leading academic staff.

Building your future

As a Queen Mary student, from day one we help you plan for and build your future career – whatever and wherever that may be.


In an increasingly competitive job market, employers are looking for well-rounded graduates with transferable skills. Making the most of the experiences available to you while you're a student means you'll leave university in the best possible position.

At Queen Mary, you'll be given the chance to gain skills and experience that will set you apart – from internships and community volunteering, to studying abroad. These opportunities will help you broaden your horizons, develop your skillset, and meet new people from all walks of life.

We're also here to help you decide what path to take after graduation, and give you the tools you need to pursue it. Our Careers and Enterprise team offers a wide range of advice, resources and events to help you find your ideal career, along with practical help with applications and interview preparation.

If you'd like to start your own business or social enterprise, you'll be supported to develop your entrepreneurial mindset. Our high-impact developmental programmes and funding opportunities can help you turn your idea into reality.



 Mile End Library
Mile End campus

Starting your career journey

From your first day at Queen Mary, we'll work with you to give you the guidance, tools and opportunities needed to gain confidence and take your next step. You'll leave us ready to face the future on your terms.

We'll tailor your development around your schedule and the things you want to do – whether that's an industry placement, a part-time job on or near campus, or starting a business.

Your opportunities from day one

Finding the right career for you starts as soon as you join us. You'll have access to the advice you need, whether that's through a one-to-one appointment, a workshop led by our expert careers consultants, or our wealth of online information.

There are many ways to gain work experience through initiatives like our Student Consultancy Project, industry placements,

paid internships or even starting your own business or social enterprise.

We'll also help you find a job to earn money alongside your studies. You can find flexible work either on- or off-campus through our in-house recruitment agency, and you'll always be paid at least the London Living Wage.

Work while you learn

Industrial or professional experience offers you amazing opportunities to gain crucial skills and make contacts. It's also a great way to put into practice the things you learn on your course and gain an insight into your chosen industry.

If you opt for a degree with a Year in Industry, this will normally take place after your second year of study. The Year in Industry is an opportunity for many of our programmes, but not all of them – so do check your options before you apply.

Many Schools can help you find subject-specific placements, and our Careers and Enterprise team runs an award-winning work experience programme.

Our Mile End campus is less than 20 minutes from the City, Canary Wharf, the West End and Tech City, putting you in easy reach of some of the world's most exciting companies.

Learn more



89% of graduates were in work or further study **15 months** after graduation

Graduate Outcomes Survey 2019/20



£31,019 average salary five years after graduation



Careers and Enterprise



Blizard Institute
Whitechapel campus





Study abroad

Studying abroad is the adventure of a lifetime. Alongside amazing memories, you will come away with increased confidence, invaluable life skills and the chance to learn – or improve – a foreign language.

Start planning your adventure

Many of our programmes are available with a study abroad option, opening up the world to Queen Mary students.

Placements normally last a full year, though some Schools offer the option of studying abroad for the first semester of your second or third year. If you study abroad for a full year, you'll spend the third year of your degree abroad, then return to Queen Mary for your final year.

Queen Mary has exchange agreements with prestigious institutions in over 30 countries around the world, from Australia to Argentina and Canada to China as well as multiple countries across Europe.

What's the benefit?

Studying abroad gives you the best of both worlds: a Queen Mary degree and the chance to live in another country, with full access to your exchange institution's social, academic and cultural life.

By immersing yourself in another culture, you'll gain an entirely new, global outlook on life. It's also a chance to broaden your horizons, establish your independence, and meet new friends from all over the world.

What's more, employers value the skills you'll gain by taking part in overseas programmes. These include resilience, cross-cultural communication skills, and the ability to adapt to new environments.

Summer Schools and short programmes

At Queen Mary, you'll have the chance to spend the summer overseas on a language, academic or cultural immersion programme at one of our partner institutions. Our summer and short programmes take place outside the academic calendar and are a great option for students who want to have a short-term experience abroad.



If you go abroad, be ready to adapt, to experience things you would have never experienced if you would have not left, to fail, to win, to be uncomfortable and to learn who you are and what your limits are. Going abroad is a great way of getting a sense of who you are because you are actively challenging your comfort zone, reaching outside of it to know where you succeed and where you fail.

Lucia Rodriguez
(pictured left),
BA Politics and International Relations,
final year
(Full year abroad at the
University of Hong Kong)

Learn more



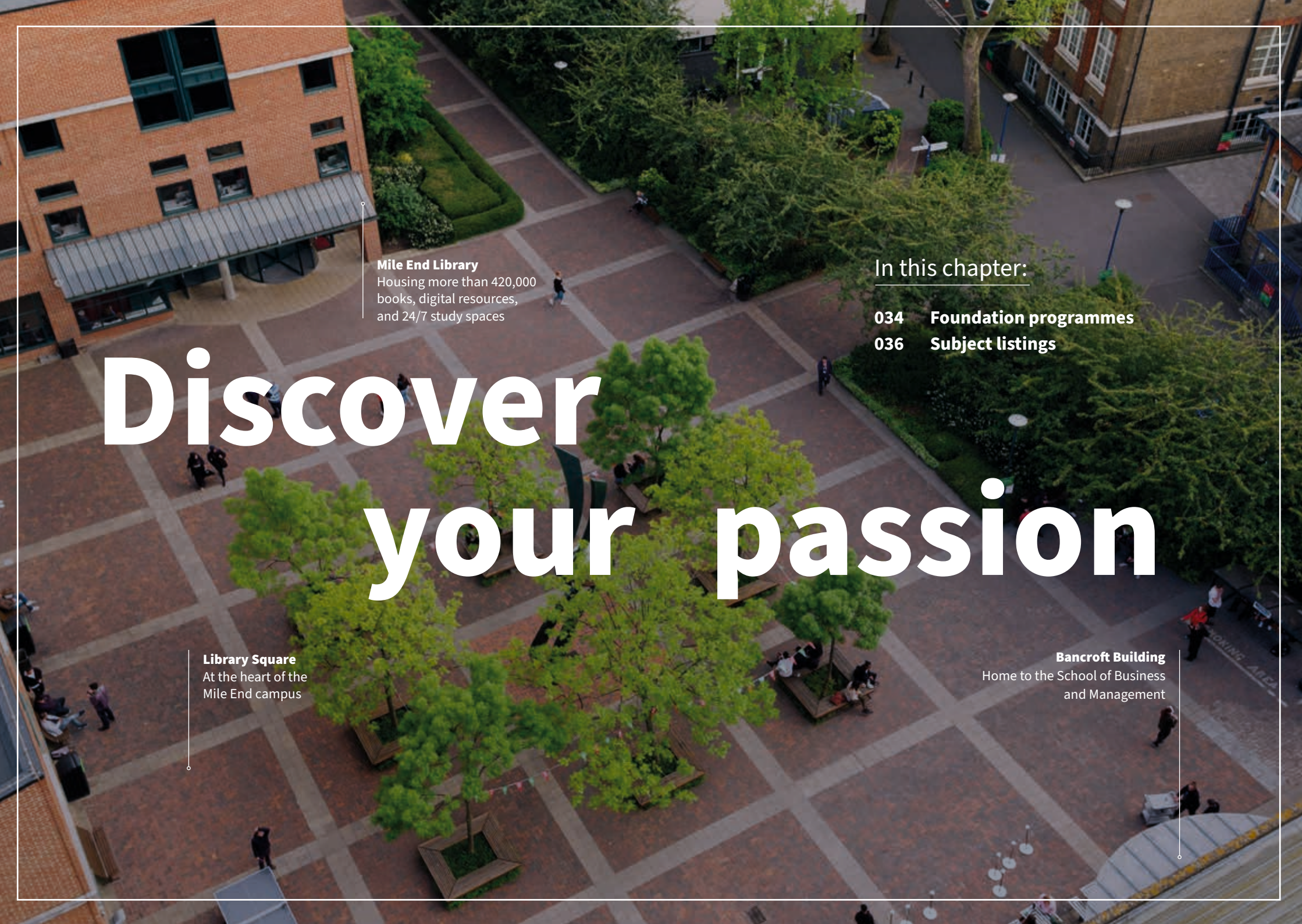
Global
Opportunities



Our Instagram
page



Queen
Mary Global
Bloggers



Discover your passion

Mile End Library

Housing more than 420,000 books, digital resources, and 24/7 study spaces

In this chapter:

034 Foundation programmes

036 Subject listings

Library Square

At the heart of the Mile End campus

Bancroft Building

Home to the School of Business and Management

Foundation programmes

Our foundation programmes are designed to equip ambitious students with the skills and experience they need to progress on to an undergraduate degree. The programmes are all taught by Queen Mary academics on our unique campuses in East London, which are home to students from more than 170 nationalities.

Foundation programmes

Our foundation courses offer students an alternative route into Queen Mary's undergraduate programmes. Available in a wide range of subject areas, our foundation programmes give you the subject-specific knowledge and academic study skills required to progress on to an undergraduate degree at Queen Mary or elsewhere.

During your programme, you will have full access to all student facilities, including welfare, social and sports facilities and the library. We offer the International Foundation Year in the following subject areas: Business and Management, Comparative Literature, Drama, Economics and Finance, English, Film Studies, Geography, History, Linguistics, Modern Languages, Liberal Arts, and Science and Engineering. We also offer integrated foundation programmes in Business and Management, Economics and Finance, and Science and Engineering.

We provide academic and personal support to prepare you for undergraduate degree studies. The courses are designed to help you gain the study skills

required to progress on to an undergraduate degree at Queen Mary or elsewhere.

International Foundation Year pathways (for international students)

Humanities and Social Sciences

- Business and Management
- Economics and Finance
- English Literature, Film and Drama
- Geography and Development
- Law*
- Politics and International Relations

Science and Engineering

- Biological Science
- Chemical Science
- Electrical Engineering
- Engineering
- Mathematics
- Materials Science
- Physics

Medicine and Dentistry

- Certificate in Clinical Foundation Studies

Please note that if you have completed the majority of your secondary school education in the UK, you may not be eligible for entry to some of the programmes.



Our alumni

I chose to stay at Queen Mary for my degree because I had one of the best years of my life doing the International Foundation Year here. Everyone was so friendly, and I just felt at home. The teachers got the very best out of me and allowed me to fulfil my potential.

John Tan Yu Choong,
BSc Business Management,
2020



You can choose your bachelors degree from **100** Queen Mary programmes


Learn more



Our foundation programmes



International Foundation Year

 **Mile End Library**
Mile End campus

*Please note entry to the School of Law is unavailable if you have taken a qualification that could allow you to gain direct entry with the required grades.

Biological and Biomedical Sciences

Our programmes span the whole of the biological and biomedical sciences, from the study of whole organisms to genetics and molecular biology.

Our programmes

Our Biomedical Sciences, Medical Genetics, Neuroscience, and Pharmacology and Innovative Therapeutics programmes – co-taught between the School of Biological and Behavioural Sciences, and the Faculty of Medicine and Dentistry – focus on the more medical aspects of the subjects.

If you're interested in ecology or conservation, our Zoology programme focuses on the underlying concepts that shape our understanding of animal diversity, including physiology, neurobiology and behaviour.

Those more interested in the molecular side of biological science can choose our programme in Biochemistry, which includes the study of

molecular biology and chemistry. Our Biology programme offers a strong grounding in biological sciences, and combines the study of molecular biology and chemistry.

To develop real-world skills and put your learning into context, we offer a Year in Industry option on our Biochemistry and Pharmacology and Innovative Therapeutics programmes, and the opportunity to transfer on to this for our Neuroscience and Biomedical Sciences programmes. You can also get a global perspective and undertake a Year Abroad on all programmes.

What are we up to?

Our researchers have uncovered a key process in energy conversion in plants. This new knowledge could help scientists

improve the resilience of important crops and engineer bacteria that can produce useful compounds like pharmaceuticals more sustainably.

All cells, whether plant or animal, use a chemical called adenosine triphosphate (ATP) as their energy currency. Animals like humans make ATP through the process of respiration, whereas plants use photosynthesis to convert sunlight into ATP.

There is an intermediate step in the process in plant cells, where the light energy is used to create a 'proton gradient', which then helps create ATP. The proton gradient is like the height of the water in a hydroelectric dam – it is a form of 'potential energy', which then gets converted to the

chemical energy unit of ATP. However, until now how this proton gradient is created in the first place has been poorly understood. Dr Guy Hanke and his team have shed light on this by mapping the electron transfer process required for setting up a proton gradient, in a key part of the molecular machinery, photosynthetic complex 1 (PS-C1).

Dr Hanke said: "Ultimately, we hope that understanding how PS-C1 works will enable us, and other researchers, to manipulate photosynthetic bacteria for biotechnological purposes. This could include supporting the energetic demands necessary to produce high-value compounds such as pharmaceuticals in a more sustainable way."

Learn more



About the School



About our programmes



Student's view

I found the teaching at Queen Mary to be outstanding. Sitting in one lecture can clearly show you the passion lecturers have for the modules they're teaching. Thus, you're easily inspired to learn more and develop respect for subjects you never thought you'd care for before.

Jumana Taha,
BSc Biomedical Sciences,
3rd year

94%

The proportion of BSc Pharmacology and Innovative Therapeutics **students who are satisfied with the course**

The Guardian University Guide 2023

Business and Management

At the School of Business and Management, our programmes are designed to create responsible future leaders. Many of our degrees are professionally accredited, giving you a head start in your chosen career.

Committed to social responsibility

Our teaching is underpinned by the values of social justice, sustainability and good governance. We invite our students to ask incisive questions, to challenge their assumptions, and to search for solutions to real-world business challenges.

You'll learn from internationally acclaimed experts in their fields, who teach students to think beyond textbooks, management fads and overly simplistic formulas for success. Our undergraduate programmes are diverse, covering accounting, finance, human resources, international business, marketing, management and social change.

What are we up to?

Our academics conduct cutting-edge research, their impact going beyond academia and reflecting our School's core values. Dr Stella Ladi has acted as a public policy expert at the Ministry of the Interior and the Ministry of the Aegean, Greece. Professor Colin Haslam is a technical advisor to the United Nations Environment Programme. Dr Elena Doldor's research focuses on strategies to improve gender and ethnic diversity on UK corporate boards and in senior leadership.

New programmes

To reflect the ever-changing business landscape, we are continually developing our portfolio of courses. Our new BSc Accountancy (Flying Start) programme will elevate your career in business and

accounting, and put you on track to becoming an Institute of Chartered Accountants in England and Wales (ICAEW) Chartered Accountant. Paid work placements are built into the course, giving you the opportunity to apply the technical theory you learn in the classroom.

Our new CMI-accredited BSc Management for Social Change course integrates a work placement with a socially-conscious organisation into your studies. We have also introduced a Year in Industry option to two of our programmes:

- BSc Management with a Year in Industry
- BSc Marketing and Management with a Year in Industry

Where could business and management take you?

Our graduates are highly sought after by industry leaders, and our location close to the financial heart of the UK puts you in easy reach of some of the world's most exciting organisations. Recent graduates have gone on to work for Amazon, Deloitte, ITV, PwC and Salesforce.

Our alumni have also gone on to start their own charities: Bilal Bin Saqib (BSc Business Management, 2011) founded Tayaba, a non-profit organisation

that has changed the lives of more than 20,000 people living in water-deprived communities.

Facilities and resources

The School has an excellent range of facilities and support. Our students can request one-to-one careers coaching and academic support, and have access to the latest industry-standard databases and software. The School is home to the University's Entrepreneurship Hub, and houses the first student-led social impact venture capital fund in the UK.

Learn more



About the School



About our programmes



Our alumni

I chose the School of Business and Management because of its diversity and cultural environment. Queen Mary has a lot of students from different backgrounds and cultures. When I visited for an open day, I immediately knew that it was the right university for me.

Aniththa Ragunathan,
Internal Recruiter at Amazon,
BSc Business Management,
2019

81%

The proportion of graduates from BSc Business Management **in work or further study 15 months after graduation**

Graduate Outcomes Survey 2019/20



Our BSc Management for Social Change is **accredited by the Chartered Management Institute**

Our BSc Accountancy (Flying Start) is **accredited by the ICAEW**

Chemical Sciences

Queen Mary's Chemistry and Pharmaceutical Chemistry programmes are accredited by the Royal Society of Chemistry. You'll be taught by senior academics in physical, computational, organic and inorganic chemistry.

Learn at the cutting edge

Chemistry is often thought of as the central science, bringing together mathematics, physics, biology and medicine. At Queen Mary, we're proud of our vibrant research culture and ensure that every new discovery informs our taught courses, with the latest findings shared in weekly seminars.

Our Chemistry and Pharmaceutical Chemistry programmes are taught in the Joseph Priestley Building, which has benefited from a £5.2m investment in a new undergraduate teaching lab. The design itself is similar to commercial laboratories, preparing students for the next stage of their careers.

Because of our Royal Society of Chemistry (RSC) accreditation, Chemistry and Pharmaceutical Chemistry graduates gain Associate Member of the RSC status. Chemistry and Pharmaceutical Chemistry are both available with an MSci, Year in Industry/Research or Year Abroad option.

Real-world experience

A Year in Industry offers students work experience in a real-world setting and a fantastic chance to practise and hone their skills. Aneesah Mukadam and Nishma Thakor studied BSc Chemistry with a Year in Industry, graduating in 2021. With support from their supervisors, they both found placements at GlaxoSmithKline (GSK). Aneesah, who would like

to go into research, worked in the Medicinal Chemistry department: "During my industrial placement with GSK, I worked on early-stage drug discovery projects, where my role entailed devising and carrying out effective synthetic routes to deliver target molecules.

"Throughout my placement, I had the chance to learn a wide range of laboratory techniques and gain a deeper understanding of the drug discovery process and the pharmaceutical industry. My year at GSK has been fantastic. It's not only helped me develop as a chemist, but also as a person and it's allowed me to meet many incredible people."

Nishma, meanwhile, worked in the pharmaceutical supply

chain: "I was fortunate to be a part of the micronising team, where I carried out various analytical testing techniques on both commercial and stability batches of micronised active pharmaceutical ingredients. The programme has given me the opportunity to develop a variety of key skills and competencies and demonstrate them in the working environment. It's been a brilliant year of developing both personally and professionally."

Where could chemical sciences take you?

Our graduates often work in a range of sectors, including media, technology, finance, and clinical and laboratory work. Many also move on to postgraduate study.

Recent employers have included GlaxoSmithKline, Boots UK, Hammersmith Medicines Research, St George's University Hospitals NHS Foundation Trust and KPMG.

Learn more



About our programmes



Take a virtual tour of our building



Our alumni

Studying chemistry has made me a very detail-orientated person, as well as giving me analytical skills and the ability to sort through information very systematically. These are all essential transferable skills that all employers look for.

Zahra Arjomand Nia,
Technology Consultant at Caggemini,
BSc Pharmaceutical Chemistry with a Year in Industry/Research, 2019

90%

The proportion of our BSc Chemistry graduates **in work or further study 15 months after graduation**

Graduate Outcomes Survey 2019/20

Comparative Literature

At Queen Mary, you'll study literature in translation from a huge variety of countries, cultures and periods, relating to everything from history, psychology and philosophy to painting, film and music.

Expand your horizons

The comparatist George Steiner once said that comparison "enables us to see more", and that's exactly what our programmes do too. Studying comparative literature expands your literary and cultural horizons; it also helps you to develop an impressive set of transferable skills, including analytical ability, highly sophisticated reading and presentation skills, and the ability to put things in context.

Our choice of modules lets you discover modern fairy tales, postmodern novels and short stories from around the world. You might choose to explore movements such as romanticism or modernism, and themes ranging from madness to migration to adaptation.

In addition to the wide range of options within our School, you can study modules in modern languages, film studies and linguistics, or modules from other humanities.

Academic expertise

Our staff engage in interdisciplinary research around the world, covering different periods while sharing a focus on world literature. The intellectual profile of the Department is broad and dynamic, and our academic research interests are wide-ranging.

We enjoy exciting collaborations across Queen Mary and with external organisations, and our staff engage with academic, cultural and societal activities as part of their teaching and research. Our academics' research addresses some of the most

pressing issues faced by our society, in the fields of ecocriticism, disaster studies and post-colonialism in the era of globalisation and climate change, alongside the related political, social, cultural and regional vulnerabilities arising from these.

Joint programmes

Comparative literature can be studied jointly with a modern language (French, German, Hispanic Studies or Russian), or with linguistics or film studies. These combinations allow you to approach similar topics from two distinct angles, using the knowledge and skills from one subject to deepen your appreciation of the other.

Language programmes include a compulsory Year Abroad, and all

comparative literature students may choose to take a Year Abroad as part of their degree.

Where could comparative literature take you?

Our graduates go on to enjoy a wide variety of careers. Some apply their degree knowledge directly by working in the arts, media or PR; others take up roles in editing and copywriting,

publishing, banking, corporate services, governance assistance, and event management.

Our graduates' writing skills are also highly sought after in many other sectors, such as journalism, advertising and marketing, and professions such as law (via the Solicitors Qualifying Examination) and teaching.



Our alumni

I chose to study Comparative Literature because I didn't want to be limited in what areas I could study. I really like that I've been able to take modules in anything from German thought to queer theory to climate change – there really are no limits!

Sarah Garrod,
Graduate Student and Teaching Assistant at the University of Kentucky,
BA Comparative Literature with a Year Abroad,
2021



The expertise of our **multilingual** members is combined with **dynamic inter-disciplinary research** collaborations, such as with our Centre for Childhood Cultures.

Learn more



About our School



About the Department



About the subject

Computer Science and Electronic Engineering

Our programmes are shaped by our outstanding industry connections, ensuring you graduate with a degree that could take you anywhere. You'll join a research-leading School that supports you in becoming the industry leader of tomorrow.

Our programmes

Our cutting-edge research feeds into our degree programmes, which are taught using tools and techniques that will prepare you for your career. Our partnerships with employers shape our research and teaching, and many of our degrees are professionally accredited.

All of our degrees offer a wide range of modules and dedicated student support. You'll study a broad curriculum to equip you with a solid grounding in your discipline. In your final year, you'll apply your knowledge, skills and experience to a large-scale project, allowing you to put what you have learnt into practice.

Our academics are discovering new ways to use technology and push the boundaries of

innovation. We're well known for our pioneering research, facilities and educators, and pride ourselves on our world-class projects.

What are we up to?

Tech plays a key role in solving everyday problems and improving our quality of life. Mental illness affects one in four adults in the UK, and the NHS deals with more than a million patients every 36 hours. Communication failures are common and frequently critical.

Pat Healey, Professor of Human Interaction and Turing Fellow, worked with researchers in the Faculty of Medicine and Dentistry to develop an app called DIALOG. The app is designed to improve communication between clinicians and patients during

mental healthcare, and is used in 19 countries, including the UK. DIALOG has improved the quality of health communication and reportedly reduced treatment costs by approximately £1,500 a year per patient.

In collaboration with IESO Digital Health, Professor Healey and his team have further developed their methods and applied them to cognitive behavioural therapy for depression and anxiety, now available via the NHS.

Joint programmes

You can choose to specialise across two disciplines with our joint programmes: Computer Science and Mathematics, and Computer Science with Management (ITMB). All of our programmes also include an optional Year in Industry

– a fantastic chance to gain experience and make contacts – or a Year Abroad with one of our many partner institutions around the world.

Where could a tech degree take you?

One of the most exciting parts of computer science or electronic engineering is the growth of new

fields and sectors you might not have heard of just a few years ago.

Our students graduate with a strong skillset, ready to adapt to changes and opportunities. Recent graduates have gone on to work for Google, IBM, TikTok, the NHS, eBay and Goldman Sachs.



Our alumni

A computer science or electronic engineering graduate is more valuable than gold to employers. The skills you gain at university can be applied in any job. I can confidently say that the knowledge and skills gained from my degree have given me a step up when applying for roles.

Hassan Abdel Rahman, Subject Matter Expert at YouTube Go-To-Market and Support Solutions, BEng Electrical and Electronic Engineering, 2015



We've been ranked **joint 1st in the UK** in Impact for Computer Science and Informatics

Research Excellence Framework 2021



Computing at Queen Mary named **best programme in the country for Social Mobility**

The Sutton Trust 2021

Learn more



About our programmes



Take a virtual tour of our building

Dentistry

Studying in the capital means being at the forefront of modern dentistry. Providing oral healthcare in a hugely busy and diverse city gives you unparalleled opportunities to learn.

Situated in Whitechapel next to The Royal London Hospital – one of the capital’s leading trauma and emergency care centres and home to London’s Air Ambulance – Queen Mary’s Faculty of Medicine and Dentistry is perfectly located.

A long history of excellence

The dental school opened in 1911 and we have a proud record of internationally recognised excellence in oral and dental science. In the most recent QS World University Rankings by Subject (2022), we were placed 14th in the world overall for Dentistry. The Institute of Dentistry at Queen Mary – the first new dental school to be built in the UK for more than 40 years – houses state-of-the-art facilities and follows an innovative

curriculum. You’ll study care of the mouth, including prevention and treatment of dental diseases, screening for oral cancers, managing trauma (for example, the results of road accidents or violence), orthodontics and oral surgery.

With support from tutors, you’ll be encouraged to develop an independent attitude to learning. Important features include small group teaching, practical clinical skill sessions, lectures and symposia, and communication skills training. You’ll also undertake extended outreach periods in the Docklands and Stratford, London.

Life on campus

Our Whitechapel campus is surrounded by bustling markets,

art, culture and food, with the City of London and historic Brick Lane on its doorstep. The Barts and The London Students’ Association has its own set of representatives, societies and sports clubs, as well as a bar, games room and dance studio on site. You can also live at our Charterhouse Square campus, close to the Barbican and Farringdon. This campus is home to some of our renowned research Institutes, including the Barts Cancer Institute, the Wolfson Institute of Population Health, and the William Harvey Research Institute.

We’re proud that the 2020, 2021 and 2022 National Student Surveys ranked us first in London for student satisfaction in Dentistry.

What are we up to?

Our academics are pioneers in public healthcare whose research improves lives around the world. Professor Robert Hill became the first British winner of the prestigious Varshneya Award for his work developing BioMin toothpaste containing fluoride glass technology, which dissolves slowly releasing calcium, phosphate and fluoride ions. It is now sold across Europe, China, India and Australia, and BioMin is licensing its technology to dental companies for varnishes, composite fillings and adhesives. The International Association for Dental Research announced Professor David Williams as the 2021 recipient of their Gold Medal Award. This recognises his research into the causes and consequences of oral

health inequalities, which led to the establishment of a global initiative aimed at reducing these inequalities.

We established a new mouth cancer centre to improve survival rates and quality of life for thousands of patients with squamous cancer. This centre will bring together clinical and research experts to work with patient groups, run clinical trials, and build a human tissue bank to improve knowledge and understanding.

In addition, researchers from Queen Mary and an international team have developed the world’s first rapid oral cancer test, a PCR test, which has the potential to improve the early detection of oral cancer.



Student’s view

My favourite thing about my degree is the clinical aspect, especially meeting patients. I also really enjoyed that it gives me an insight into different dental specialities, including community-based and public health aspects! The dental hospital and dental outreach sites are well-equipped, state-of-the-art facilities, providing students with invaluable clinical experience.

Haleema Rabeea,
BDS Dentistry and MSc Global Public Health and Policy (intercalated),
5th year



1st in London for Dentistry

The Guardian University Guide 2023, National Student Survey 2022



14th in the world for Dentistry

QS World University Rankings by Subject 2022

Alternative programmes

You can apply to four dental schools via UCAS, but did you know you can add a fifth choice? The extra slot can be used to apply to a non-medical or non-dental course. You may be interested in our BSc Oral Health degree, which teaches you the skills and knowledge required for you to register with the General Dental Council as a dental therapist or hygienist on graduation.

If you're looking for other opportunities for your non-dental and non-medical choice, the life sciences courses offered at Queen Mary could be the answer. Whether you dream of solving medical or dental problems through the development of innovative technology and devices, becoming a laboratory scientist, or getting involved in shaping healthcare policies, these programmes offer you exciting routes into careers that are shaping the future of global healthcare:

- Biomedical Engineering BEng/ MEng
- Biomedical Sciences BSc
- Materials Science and Engineering BEng/MEng

Where could dentistry take you?

Our BDS Dentistry graduates have an enviable employment record, with 100 per cent of those in employment going on to highly skilled jobs or further study (Graduate Outcomes Survey 2019/20).

Most of our BDS graduates typically work as dental foundation trainees, after which they either remain in the NHS or move into the private sector as dentists. A number of our graduates also work as dental practitioners in hospitals or in the community, with some working overseas.

Our BSc in Oral Health will enable registration with the General Dental Council as both a dental hygienist and a dental therapist.



Learn more



About our programmes



About the Faculty



Whitechapel Library
Whitechapel campus

Drama

At Queen Mary, you'll study drama in one of the world's great theatre cities. We're ranked sixth overall in the UK for drama by The Times Good University Guide 2023.



Our approach

We focus on developing your knowledge and expertise, both practical and theoretical. We teach you about performance, its histories, how it intervenes in the present, and how these things might affect the future.

We're not tied to rigid definitions of performance, and investigate how it can be used in different settings – theatres, art galleries and museums, schools, prisons, warehouses, and the street – in the UK and internationally.

With a commitment to social justice, the Department of Drama draws on the work of our activist theatre makers, including Paul Heritage and Lois Weaver, creating new ways of thinking about the classics. We're dedicated to exploring

marginalised texts, voices and communities in order to examine life through performance.

World-leading expertise

The most recent Research Excellence Framework 2021 ranked us first in the UK for research in drama. Our main areas of expertise are cultural histories of performance, transnational performance, live art, and socially engaged and applied performance.

Our world-renowned teaching team includes artists, writers and performers. You could work with some fascinating writers and teachers: activist playwright Dr Mojisola Adebayo, radical writer Dr Michael Shane Boyle and participatory performance expert Professor Caoimhe McAvinchey.

Three Arts Council England organisations are based at Queen Mary: People's Palace Projects, Phakama and *Wasafiri*. The Department is a key partner in A Season of Bangla Drama and the Live Art Development Agency.

Making the world better through drama

The Verbatim Formula (TVF) is a collaborative participatory arts project founded by lecturer Dr Maggie Inchley. TVF specialises in sharing the stories of young people in care and care leavers, including those in higher education. It uses the Headphone Verbatim method – a technique where a performer listens to audio recordings of a testimony through headphones while saying what they hear out loud, becoming a vessel for the original speaker's voice.

People's Palace Projects explore how people's worlds can be transformed through art. The organisation brings together artists, activists, academics and audiences for projects that address a wide range of social justice and human rights issues.

Where could drama take you?

Drama graduates go on to work in a variety of roles, including performing, programming

and producing. They work in sectors as varied as the arts, care, entrepreneurship, media, publishing and teaching, nursing, theatre, social work, art therapy and TV production.

Recent drama graduates work for companies including the BBC, Electric Cinema, the London Film Museum, the National Theatre, Odeon Cinemas and Shakespeare's Globe.

Learn more



Visit our
Drama Hub



What can
you do with a
drama degree?



Our staff

Dr Mojisola Adebayo, a Queen Mary alumna and lecturer, won the Alfred Fagon Prize for her play *Family Tree*. The play explores an important underrepresented voice written out of history. *To Do List* praised the play as "a beautifully poetic site-responsive promenade performance inspired by the little-known story of Henrietta Lacks and her stolen cells."



We've been ranked **6th overall in the UK** for Drama

The Times and The Sunday Times Good University Guide 2023



We've been ranked **1st in the UK** for the quality of our research

Research Excellence Framework 2021

Economics and Finance

At the School of Economics and Finance, you'll be given the tools and opportunities you need to succeed in your chosen career. We're located close to London's financial districts in the City and Canary Wharf, meaning that you'll benefit from our links with leading names in banking and finance.

Our programmes

We offer a broad curriculum, providing a solid foundation in the three core areas of economics: microeconomics, macroeconomics and quantitative analysis, as well as finance.

You can combine our degrees with an Integrated Foundation Year, a Year Abroad, or a Year in Industry, and all of our finance degrees are accredited by the Chartered Financial Analysts Society. This means that our graduates can take Investment Management Certificate professional qualifications without having to complete a further two years of study.

We're one of the few UK universities to offer access to Bloomberg trading terminals in our designated trading room,

as well as an Interactive Brokers Trader Workstation and FXCM Forex Trading Station, as used by economists. You'll also benefit from access to the major statistical databases and software packages.

What are we up to?

Our teaching staff are at the forefront of influential research in economic and finance policy. Academics and visiting professors have strong links with industry, including the Bank of England, HM Treasury and global financial institutions, and are often featured in national and international media outlets such as the *Financial Times*, the *Wall Street Journal* and the *New York Times*.

Dr Sang Yoon (Tim) Lee, Reader in Economics, received a grant from

the British Academy in order to gain specific insight into the global health pandemic. In his research, he examined the unequal impact of Covid-19 and policy responses on observed infection rates and economic status in the UK and South Korea – specifically the impact on Covid-19 deaths and GDP drops in both countries.

Where could economics and finance take you?

Our programmes give you the necessary base of knowledge and skills to access academic and professional routes in economics, finance, politics, government, management, consultancy and statistics. Many of our graduates go on to pursue postgraduate studies at Queen Mary and other leading institutions.

The School is unique in providing a tailored module on employability for each year group, which includes CV building, finding opportunities, and interviewing. Our graduates find employment in a broad range of financial services companies including J.P. Morgan, Barclays, and Deloitte, as well as interesting non-financial roles such as Civil Service graduate schemes.

Our dedicated careers advisors provide one-to-one support, practice interviews, CV checks, and entrepreneur advice that's available throughout your studies. Additionally, we invite a wide variety of employers on to campus for exclusive financial events.

Learn more



About the School



Take a virtual tour of our building



Our alumni

The lectures and tutorials are structured with a balanced mix of both quantitative and qualitative fundamentals. I started off with minimal comprehension of the industry, but I certainly left with a knowledge of core investment concepts, and an incentive to explore additional asset classes and economic branches.

Mara Rodriguez,
BSc Economics,
2021

87%

The proportion of our BSc Economics and Finance graduates **in work or further study 15 months after graduation**

Graduate Outcomes Survey 2019/20



We've been ranked **84th in the world**

QS World University Rankings by Subject 2023

Engineering and Materials Science

Our degree programmes have been designed in consultation with our students, staff and industry professionals, and reflect the global challenges facing both our society and your future as an engineer.

Our approach

Here at Queen Mary, we teach students how engineering theory is applied in real-life situations, and how engineering principles can be used to solve real-world problems.

Our practical approach helps bring engineering concepts to life, placing student-centred learning, laboratory work, case studies, and design, build and test at the heart of our programmes.

From your first year, you'll build a strong foundation in fundamental engineering concepts such as fluid mechanics, design, materials and mathematical modelling, while being introduced to chosen specialisms through our Explore Engineering modules.

Our engineering students have access to state-of-the-art facilities. We've invested more than £30m on refurbishing and expanding our engineering labs, ensuring that our students are well equipped for a future in engineering.

Queen Mary has a long, proud history of teaching engineering, throughout which we've maintained our passion for innovation and discovery. Our academics are at the forefront of their field, and their research feeds into the curriculum.

What are we up to?

Engineers are the ultimate creative problem solvers: they find solutions to issues and work to improve the world. Queen Mary is a hub of ground-breaking, world-changing research.

Our sustainable energy and mechanical engineers are working with Wave Energy Scotland to improve wave energy efficiency off the UK coasts, while bioengineers are developing a complex *in vitro* model of human tumours, and robotics engineers are making advancements in the field of soft robotics.

Dr Karin Hing's development of a synthetic bone graft was included in the six stamp set marking innovations in British engineering from the past 50 years. Her team at Queen Mary engineered materials that encourage bone growth when used in complex orthopaedic surgeries and have improved the outcomes for hundreds of thousands of patients worldwide.

Where could engineering take you?

An engineering degree offers exciting career prospects, with engineering and manufacturing industries in the UK and across the world expected to expand even further over the next decade.

We're committed to enhancing graduate employability, and have introduced a graduate attributes matrix to help students develop the knowledge and skills they need to succeed both personally and professionally.

This matrix allows students to recognise and record the wide-ranging skills developed over the course of their degree, which will help them reflect on what they want to do and effectively market themselves to future employers.

Recent graduates have gone on to work for Jaguar Land Rover, Schlumberger, the NHS, Rolls-Royce, Dyson, National Nuclear Laboratory, BAE Systems, Network Rail and BT.

Learn more



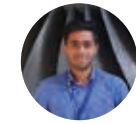
About our programmes



About the School



Take a virtual tour of our building



Student's view

My course has taught me various aspects of engineering analysis, design and practical applications, which have been thoroughly enjoyable and insightful. My advisors guided me to secure an industrial placement at Rolls-Royce, where I worked as a mechanical engineering intern and had incredible opportunities to learn from industrial experts.

Soham Deshpande,
MEng Mechanical Engineering with Industrial Experience,
5th year

91%

The proportion of graduates from the School of Engineering and Materials Science who are **in work or further study 15 months after graduation**

Graduate Outcomes Survey 2019/20

English

We are dedicated to the broadest and most inclusive vision of English studies. You'll expand your critical skills through innovative approaches to cultures and periods, from early modern texts to today's writing.

Our approach

Grounded in London's East End, our research and teaching emphasises global perspectives and the relationship between literature and the wider world. As an English department, we are highly critically engaged – just like the students we teach. Our areas of specialism include postcolonial and world literature, gender studies, queer theory and new media, ranging across platforms from the manuscript to the book, and from the stage to the digital.

In our modern and responsive English programme, you'll work alongside world-leading academics as you engage with literature in its widest senses and hone your critical and writing skills.

Our English with Creative Writing programme offers a diverse base

in literature with a focus on the skills needed to become a writer. The programme brings together literary history and theory from medieval literature through to contemporary and postcolonial writing, with creative writing elements designed to help you find your voice and develop successful writing techniques, whether in prose, poetry or creative non-fiction.

The programme is headed by established writer and editor Brian Dillon and includes writers like acclaimed poet Nisha Ramayya, Goldsmiths Prize 2021 winner Isabel Waidner, and novelist Michael Hughes.

What we do

We're committed to pursuing equality, diversity and inclusion through our research and

teaching, and our academics' work tackles issues that are central to our society and culture.

Writing in the *The Guardian*, Professor of Renaissance Studies, Jerry Brotton reviewed Boris Johnson's 2007 essay on the Islamic world and its perceived lack of development compared to the West.

Professor Brotton found this take on Islam to be "historically illiterate", reporting that Johnson's essay "reveals a level of historical ignorance shocking even for such a political opportunist... Johnson might like to know that scholars now believe Michelangelo took inspiration for designing St Peter's from the imperial mosques designed by the Ottoman architect Sinan, who

also influenced the other great Italian architect, Palladio."

Professor Brotton's books have been translated into 20 languages worldwide, and his *A History of the World in Twelve Maps* was a *New York Times* bestseller.

Where could English take you?

Our graduates go on to work in all sorts of sectors, including law, teaching, publishing, media and communications, marketing, and arts and heritage.

Some of our most well-known alumni include authors Sarah Waters, Caleb Femi, Gabriel Krauze, JG Ballard and Conn Iggulden, and TV comedy writer James Lamont. Recent graduates work for HarperCollins, Historic Royal Palaces, The Independent, London & Partners, Penguin Random House and Shakespeare's Globe.

Learn more



Visit our English Hub



What can you do with an English degree?



Our alumni

I had heard great things about Queen Mary, and so that's where I wanted to go. In terms of favourite modules, Postcolonial and Global Literature, and Black Writing in Britain were very eye-opening. I remember realising there's a lot we should know about literature, history and heritage that is just not taught until university. I went into publishing this year and these modules shaped my understanding of what I want to do in this industry.

**Ama Badu,
BA English,
2018**

92%

The proportion of our BA English graduates **in work or further study 15 months after graduation**

Graduate Outcomes Survey 2019/20

Environmental Science

You will learn about physical and ecological processes behind global emergencies like climate change, biodiversity loss and environmental degradation. You will then explore novel management and policy interventions to mitigate environmental risks and restore damaged ecosystems.

An interdisciplinary degree

Our programme draws on the expertise of the School of Geography and the School of Biological and Behavioural Sciences to offer a truly distinctive degree. You will develop a strong base of scientific knowledge and choose specialist topics tailored to your own interests and career goals. From climate change and conservation to environmental engineering, ecology and evolution, our modules will develop your understanding of society's most pressing challenges.

Thanks to our local, national and international connections, you can apply your knowledge to real-world problems, working with community groups, environmental trusts and charities to make a positive change.

Expanding horizons

Our BSc Environmental Science with Business Management adds a focus on key business skills to your environmental science education. In addition to environmental science modules, you take two business modules each year on topics such as management, marketing, and human resources.

All our degrees have a four-year version that includes a full Year Abroad. You will study at a prestigious partner university and immerse yourself in a different culture.

Academic expertise

Whether researching river restoration or environmental pollution, you will learn from researchers working at the

forefront of their fields. Our academics have recently conducted pioneering research with lowland rewilding site Knepp Wildland on a project aiming to establish a functioning ecosystem where nature is given as much freedom as possible.

Our research shapes public policy. Research on eroding coastal landfill sites has led to changes to waste policy in the UK and Europe. Our experts have also worked on international climate policy at the Committee for Climate Change and the Department for Business, Energy and Industrial Strategy.

Facilities and fieldwork

You will use the state-of-the-art laboratories in the School of Geography on taught modules and as part of independent

research on topics as diverse as environmental pollution and hazards to river systems, climate change and sediment analysis.

Fieldwork plays a vital role in our degree programmes, allowing you to apply knowledge from the classroom in real-world settings.*

Where could environmental science take you?

A degree in environmental science will provide you with a unique range of skills, including

data collection and evaluation, laboratory analysis, independent field research, project management, teamwork, and communication.

Our graduates have gone on to work as environmental consultants, sustainability analysts, geomorphologists, and science communicators. Recent graduate destinations include the Foreign, Commonwealth and Development Office, the BBC and the Solar Impulse Foundation.



Our alumni

During my time at Queen Mary, I was able to develop my interests in key environmental matters including energy, climate change and environmental engineering. I was also exposed to the importance of data in research through remote sensing, geographic information systems, applied data analytics and various methodology classes.

Louis Gondy,
Data Analyst at the Solar Impulse Foundation,
BSc Environmental Science and Business Management,
2017

90%

The proportion of our BSc Environmental Science graduates **in work or further study 15 months after graduation**

Graduate Outcomes Survey 2019/20

*Fieldwork destinations and opportunities may vary year-on-year and are subject to change and discontinuation.

Learn more



About the School



About the subject



Our alumni

Film Studies

At Queen Mary, you'll learn from filmmakers and academics at the cutting edge of their field. You'll explore the history and theory of the cinema, while also learning the technical and practical aspects of film production.

A well-rounded programme

Film studies demands creative, original thought – asking you to question, for example, how class, race, ethnicity and sexuality are represented on the screen.

Our practical modules also introduce you to the creative and technical skills required for scriptwriting, production managing, directing and editing.

Our London location

We're based in the heart of the East End, close to the creative and media quarters in Hoxton, Shoreditch and Spitalfields. The Department houses facilities including a state-of-the-art cinema space, a film production suite, two film studios with professional lighting grids, two edit suites and motion capture equipment.

London is a thriving hub of film and cinema culture. It's home to the British Film Institute (BFI) and the London Film Festival and, with many film and television productions based here, you can gain valuable experience alongside your studies.

We have close links with local communities, festivals and organisations, including regular collaboration with the UK Asian Film Festival.

Academic expertise

Our world-renowned academics regularly publish field-defining books and take part in events at the BFI, Barbican and Tate. Our Autism through Cinema project within the Centre of Film and Ethics, supported by the Wellcome Trust, promotes an understanding of autism

as a condition with benefits. The project seeks to deepen knowledge of neurodiverse experience through the optic of body language, its historical crafting in medical and commercial film, and its recreation in film form.

Our Film Cultures research centre is a leader in the fields of film history, film cultures and national cinemas. Areas of expertise include the cultures and industries of British, Chinese, French, Indian, Russian and US cinemas.

Joint programmes

Film studies' mixture of theory, practice, history and languages makes it a natural partner for several subjects. You may choose to study it jointly with comparative literature, drama,

English, French, German, Hispanic studies or Russian.

Joint programmes involving a modern language include a required Year Abroad, and all film studies students may choose to take a Year Abroad as part of their degree.

Where could film studies take you?

Film studies prepares you for careers in film, television, and the creative arts, or you can continue in academic study

with our masters route. You'll graduate with an excellent knowledge base and a range of transferable analytical, research and communication skills.

Graduates have found work as artistic and film directors, cinematographers, digital editors, dubbing coordinators, short film producers and post production runners, with companies such as Equinox Film and TV Production, SALT. TV, Walks of Life Films, Pocket Blockbuster and Fremantle.

Learn more



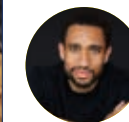
About the School



About the Department



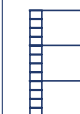
About the subject



Our alumni

I was lucky at Queen Mary to have amazing lecturers who had practical experience in the filmmaking world and who were really interested in what I was doing. As a student, I got the sense that they were passionate about what they were teaching, and they were really interested in the students and took time to explain things to you.

Matt Kay,
Documentary director,
BA Film Studies,
2011

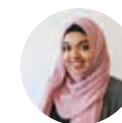


The Department of Film is ranked **5th in the UK** for Media and Film Studies

The Guardian University Guide 2022

Geography

Geography's unique concern with how our social and physical environments interact puts it at the forefront of many pressing global challenges, including climate change, sustainable development, international migration and global health.



Our alumni

My geography studies were the basis of my career. Because of my inspiring lecturers, I was able to tackle the topics that were of interest to me while getting clear guidance and support from them throughout.

Farhasaad Shahid,
Communications Associate at the UN High Commission for Refugees,
BA Human Geography,
2017



We've been ranked **10th in the UK** for the excellence of our research outputs

Research Excellence Framework 2021

*Fieldwork destinations and opportunities may vary year-on-year and are subject to change and discontinuation.

Our programmes

Our BA/BSc Geography enables you to choose modules focusing on the study of physical or human geography depending on your interests. Our BA Human Geography is one of the few specialist human geography degrees available in the UK.

Our modules explore the critical challenges of our time: you could study globalisation and international development, as well as climate change and environmental management. As such, you will graduate with a well-rounded knowledge of the social, political, economic and environmental processes that shape the world around you.

We offer exceptional laboratory facilities and a range of exciting fieldwork opportunities*, allowing you to apply knowledge from the classroom in real-world settings.

Expanding horizons

Our BSc Geography with Business Management lets you add a focus on key business skills to your geographical education. In addition to geography modules, you take two business modules each year on topics such as management, marketing, financial accounting and human resources.

All our degrees have a four-year version that includes a full Year Abroad. You will study at a prestigious partner university and immerse yourself in a different culture.

Academic expertise

Our academics strive to solve the major environmental and societal challenges of our time, generating rigorous research evidence and turning that into impactful practical and policy change. They work with powerful partners like government agencies and big tech companies to drive progress. In recognition of our expertise, QS World University Rankings 2022 named us among the top 100 geography departments worldwide.

The School is proud of having led on research that underpinned the UK Living Wage Campaign. Our students have the opportunity to get involved with research projects conducted within the School that effect real change in the world around them. You'll benefit from

working with academic staff whose research sits at the cutting edge of the discipline and who bring this expertise to the classroom.

Where could geography take you?

Geography gives you a unique range of subject-specific and transferable skills, including data collection and analysis, the interpretation and evaluation of complex ideas and evidence,

and individual and group project management. Many of our graduates use their subject knowledge directly, in environmental policy, town or transport planning, or geographical information systems. Others take their transferable skills into other careers, from business to health. Recent graduate destinations include Deloitte, KPMG, the Environment Agency and the United Nations.

Learn more



About the School



About the subject



About our programmes

Global Development

Study an innovative, interdisciplinary programme on development theory and practice. Combining insights from across the humanities and social sciences, you will explore social, economic, political and cultural change across the Global South.

An interdisciplinary degree

Our BA Global Development examines pressing development issues, from social inequalities and climate change to gender and race, through an innovative interdisciplinary programme. You will be based in the School of Geography but will build your programme from carefully curated pathways of modules drawn from history, politics and international relations, languages, linguistics, and film.

As well as studying the social science theories and methods needed to understand development challenges from different perspectives, you will learn about different languages and cultures to challenge the common use of Western historical

experiences as the universal templates against which the rest of the world is understood. You will be equipped for your career through first-hand experience of debating development in both theory and practice, conducting original fieldwork and engaging with global policy actors to better understand evidence-based responses to key development challenges.

Expanding horizons

You can study a four-year version of BA Global Development that includes a full Year Abroad. You will study at a prestigious overseas partner university in the third year of your degree, and so have the opportunity to immerse yourself in a different culture (and maybe language).

Global Development students will also have a competitive opportunity to undertake an unpaid internship with academics and development professionals at the London International Development Centre during their studies.

Academic expertise

Queen Mary's experts shape debates across continents on development challenges facing global society, including planetary urbanisation, global health in a post-pandemic world, migration and mobilities, political ecology and global histories of colonisation. In India, our researchers have examined how digital technologies – particularly WhatsApp – are transforming political engagement. Research on informal settlements in Argentina

has improved the participation of underrepresented communities in decision-making about urban upgrading efforts.

Where could global development take you?

A degree in global development will provide you with a number of transferable and sought after skills which will prepare you for a career in a wide range of possible sectors. These skills include the interpretation and evaluation

of complex ideas and evidence, intercultural communication, applying knowledge across disciplines and professional contexts, and individual and group project management.

We expect our graduates to progress into a wide range of careers including development consultancy, NGOs or development agencies and project management in the public and third sector.



Student's view

The global development undergraduate course has been extremely interesting so far, with study in a range of topics such as history, politics and geography with many more opportunities to come as you progress through the degree.

Zahra Sarfraz,
BA Global Development,
1st year



Student's view

It is the ideal degree for those who are keen to understand and address the socio-economic inequalities that plague the developing world and want to bring about social and political change. Alongside studying world issues of interest to us, the course enables us to develop valuable skills like researching and comparing the causes and solutions to these issues.

Soha Mohsin,
BA Global Development,
1st year

Learn more



About the
School



About the
course



About the
subject

History

Our exceptional choice of modules means you can construct a degree that's tailored to your interests. As a result, our undergraduate historians are consistently among the most satisfied in the prestigious Russell Group.

A diverse offering

The School of History was founded in 1912 to deliver world-class education and research. More than a century later, we continue to combine these crucial elements of the historian's craft. Our students and staff work together to develop their expertise about the past and understand their responsibilities to the present and the future, through study of an increasingly diverse range of historical periods, figures and outlooks.

Our module range covers topics spanning continents and millennia, so our staff and students can pursue their passions while continuing to explore new areas of history.

Your student experience

From the day you join the School, you'll get one-to-one

supervision with an academic Advisor, and this support will remain with you until your final-year dissertation – the culmination of your time with us.

Teaching is a mixture of larger classes and small, highly-interactive seminars. Assessment varies from module to module but is usually through a mixture of essays, presentations, source analysis and take-home exams.

At Queen Mary, you'll experience the real benefits of studying history in London. Key historical sites, museums and archives are just a short journey away. Our social groups, such as the History Society and Public History Unit, regularly invite speakers to campus or run trips to historical sites across London.

What are we up to?

Our staff contribute to national and international cultural life, helping to shape the debates that animate society – whether through high-profile media appearances and the curation of exhibitions, or by working with public bodies and government agencies to promote the understanding and importance of history to our lives.

Professor Amanda Vickery wrote and presented two prestigious BBC television series based on her research – *The Story of Women and Art* and *Suffragettes Forever: The Story of Women and Power* – highlighting the role of women in art and politics, and attracting a global audience. Dr Tom Asbridge wrote and presented a BBC Two documentary based on

his bestselling biography of the celebrated medieval knight William Marshal, drawing in millions of viewers and winning praise from the likes of *The Guardian* and *The Times*.

Where could history take you?

Studying history allows you to keep your options open: you'll explore existing passions while developing key writing, presentation and analytical

skills. The broad range of skills acquired by studying history, coupled with extracurricular opportunities, prepares you for success in a diverse range of careers. History graduates can apply their knowledge directly to careers in museums, education or the arts and heritage sector. Other less traditional career pathways include media, law, public relations, public affairs and business.

Learn more



About
BA History



About our
modules



Our
alumni

The large variety of history modules that Queen Mary offers was a main factor as to why I chose to study here. The campus environment makes the bustling city of London feel welcoming and accessible.

Priya Bahi,
BA History,
2020

87%

The proportion of our most recent BA History graduates **in work or further study 15 months after graduation**

Graduate Outcomes Survey 2019/20

Law

Our expert academics will support you to achieve your goals by combining rigorous knowledge and practical skills. This is enhanced by projects that enable you to experience law in a professional context.

Our programmes

In addition to our LLB Law programme, we offer several undergraduate law programmes, including two joint programmes: Law and Politics, and Law with Business. Law and Politics is designed for anyone pursuing a career that requires a solid understanding of both legal and governmental systems, and should appeal especially to students wanting to study public policy in its legal context.

Extracurricular opportunities include our award-winning Legal Advice Centre, which provides free legal advice to the public and Queen Mary staff and students, and the George Hinde Moot Competition. These give you the chance to put your knowledge into practice, while

instilling the values of legal ethics at this early stage in your career.

Law with Business gives you the opportunity to study the aspects of law and business that interest you most, such as contract law, intellectual property and management of human resources.

Our value-added programmes offer students a chance to enrich their studies with practical skills. Law in Practice* includes a third-year paid internship. English and French Law is run jointly with Paris 1 Panthéon-Sorbonne University, and your third and fourth years are spent in Paris. English and European Law includes a year of studying abroad in a European

country. Global Law includes a year studying abroad at one of our international partner universities.

The School of Law will also be launching a new LLB Climate Justice programme for the 2024/25 academic year.

Internationally renowned research

Our research has a global reputation and is driven by the demand for social justice. Our activities range from undertaking innovative research with high-profile NGOs such as Doctors without Borders (Médecins Sans Frontières) and Women's Aid, to informing reports of human rights abuses for the United Nations and monitoring the migrant rescue boats in the

Mediterranean. This work is world-renowned and transforms lives around the globe.

Where could law take you?

An LLB degree is highly regarded around the world and is a gateway to a wide variety of careers. There are multiple career paths available to law graduates, and our range of undergraduate programmes develop valuable technical and transferable skills, including

critical analysis and problem solving.

Many of our graduates have progressed to qualify and practise as solicitors and barristers in England and Wales, as well as other jurisdictions. Our alumni have also gone on to roles in a broad range of professions, such as compliance and regulation, the public sector, legal publishing, financial services, journalism, policy, NGOs and charitable bodies.



Our alumni

What sets Queen Mary apart is its focus on excellence, inclusive learning and diversity. Highly specialised lecturers give you a first-hand analysis of the law as well as its application. Therefore, you not only learn theoretical principles, but also how they apply to real-life scenarios. Finally, the University supports the student experience with opportunities to participate in mooting competitions, join law societies and receive career advice from a dedicated career service.

**Anna,
LLB English and French Law,
2022**



Ranked **26th best law school** in the world.

**QS World University Rankings
by Subject 2022**

Learn more



About the
School



Take a virtual tour
of our building

*Applications for this programme are open to first-year Law undergraduates only.

Liberal Arts

Studying Liberal Arts offers choice and flexibility across the Humanities and Social Sciences. You'll encounter new languages and cultures, forge new connections across diverse studies, and discover your passions. Our students are independent, critical and compassionate thinkers who develop new skills to help them succeed in a global marketplace.

Space to explore

The concept of the Liberal Arts stretches back centuries, focusing on what underpins active and effective citizenship. You'll develop the skills and tools to excel in the modern world, and be equipped with the abilities required to become a global leader.

You'll choose what to study from a wide array of options in our contributing Schools across the Faculty of Humanities and Social Sciences. Within your degree, you can explore languages, film, history, geography, English, drama, politics and international relations and more.

All of our Liberal Arts students study a language in their first year to help develop broad cultural

awareness, improve linguistic skills and learn to connect across cultures. Experienced language teachers will ensure that you study the language at the right level for you, whether that be a complete beginner, a native speaker, or anywhere in between.

Typical options include French, Russian, German, Spanish, Portuguese or Chinese. You can take your learning even further by exploring the option for a Year Abroad as an integral part of your degree.

Support to grow

Liberal Arts offers a chance for critical and compassionate research across disciplinary boundaries, helping graduates demonstrate leadership and creativity across cultures. Your

studies will help you become a flexible, competent, self-starting graduate ready to be an engaged global citizen.

We value diversity, and our students work across disciplines to develop a wide range of skills, exploring material that ranges from the local to the global. Students work with Advisors to help them thrive during their studies, and are supported by the Director of Liberal Arts and Major/Minor Theme Leads.

We focus on community and exploration, organising events to help students make the most of being at the heart of this global city. We help to curate student choice and ensure that our students feel like a group. Together, Liberal Arts students

will study core modules tailored for them and choose their own path with our interdisciplinary Major and Minor themes.

Skills to succeed

Liberal Arts students develop a transferable skill set which is more important than ever. They master data gathering, data analysis, independent reflection, communication, judgement and international awareness. These skills are highly valued

by employers and open up a wide range of options across the private, public and third sectors.

Curating your own studies ensures that you follow your passions, and presents fulfilling opportunities to engage with new challenges and develop your independence. You can also take advantage of our Year in Industry to develop practical experience in the workplace as part of your studies.



Student's view

Liberal Arts provides me with a foundation to deal with world issues interdisciplinarily. Because I get to study modules in a flexible way, ranging across different subjects, such as film, theatre and history, I feel equipped to think more critically. That way I get to explore all my interests at the same time.

I also get to know students from all Schools and therefore have been able to make friends from across the University. Liberal Arts is a way for you to avoid narrowing down too soon and lets you tailor your course with Humanities, Languages and Arts subjects.

Rosa Von Lieven,
BA Liberal Arts,
1st year

Learn more



About the
School



About the
course

Linguistics

Our Department of Linguistics is one of the largest in the UK and is exceptionally broad-based. You'll be taught by experts and leaders in their fields, seeing how linguistics applies to the real world.

Wide-ranging expertise
Research and teaching cover the major branches of linguistics: formal syntax and semantics, experimental linguistics, and sociolinguistics, including gender and media linguistics. You might find yourself studying a little-known language such as Fijian with a native speaker, collecting data on changing London English, designing an experiment to measure phonological perception in bilingual children, or selecting features for a language of your own in a module on language construction.

Students can opt to concentrate on linguistics for a cross-language perspective; on English language for a deeper dive into its history and varieties; or on

English language and linguistics, the most flexible option.

Our Department has strong links and partnerships with national and international institutions: we've hosted UK Language Variation and Change, and the International Gender and Language Association.

Our research
London's multilingual and multidialectal character makes it an exciting and challenging place to study linguistics. Our location adds real benefits to students' fieldwork, with chances to see their studies in practice in the real world.

Multicultural London English (MLE) is the successor to Cockney as a popular dialect in

East London, and sociolinguistics researchers at Queen Mary have been studying it together with community speakers for more than 15 years.

Our researchers have verified the existence of a new pronoun, 'man', new pronunciations and many other linguistic innovations that have emerged in multilingual areas of London. The research shows that MLE is different lexically, phonetically and syntactically from Cockney and other southern English dialects. In fact, it represents a new and continuously evolving system.

Joint programmes
Linguistics pairs naturally with the study of other languages and literature. Students may

Les maladies rhumatoïdes.
On les voit surtout chez les affaiblis, on les voit surtout à la suite de toutes les ma-
ladies aiguës et dans les cas où le système
musculaire est le plus affaibli. Le défaut
d'un bon massage est une cause de leur
aggravation.
Les premiers symptômes frappent toutes les
membres, sont difficiles, et douloureux, la souff-
rance s'exagère dans le repos et la chaleur d'hiver.

Le meilleur des médicaments toniques, le seul préparé avec le quinquina-jaune royal et un vin vieux, de qualité supérieure; combat l'Anémie, active les Convalescences, réagit contre la Faiblesse et la Fatigue, quelle qu'en soit la cause.

TONI-NUTRITIF
au QUINQUINA et au CACAO

VIN DE BUGEAUD

TOUTES PHARMACIES
Bien se défier des Substitutions intéressées.

BEAUTÉ DE LA FEMME
Plus de Rides ni de Teint flétri.
La Beauté-Jaquette est une merveilleuse découverte scientifique.



Student's view

The best things about my course have been the engaging modules and enthusiastic lecturers who put their all into delivering interesting content. I always feel supported by my lecturers, as they are willing to help with any of the content and ensure I have a good understanding of it.

Jamie Rooke,
BA English Language and Linguistics,
2nd year



Our department is **top-ranked in the UK** for research quality in the latest research assessment

Research Excellence Framework 2021

Learn more



About the School



About the Department



About the subject

Mathematical Sciences

In the School of Mathematical Sciences, you'll learn from world-leading academics in a friendly, collaborative environment. We will nurture your passion for mathematics and help you succeed in your chosen career path.



Our alumni

Studying mathematics at Queen Mary enhanced my analytical and problem-solving skills, and during my course I had the chance to take modules such as Computing and Data Analysis with Excel, Introduction to Computer Programming (Python) and Professional Skills and Data Analysis with SAS, which gave me the transferable technical skills required in my industry.

Ma-ai Elven,
IT Audit Analyst at KPMG UK,
BSc Mathematics,
2020

A vibrant community

Joining our School means you'll be joining a diverse, international community of like-minded, intellectually curious students, who use logic and creativity to solve the problems of the 21st century.

It's a supportive community too, working together to achieve goals, with our expert academics here to inspire you and the opportunity to join our award-winning Mathematics Society.

We invest in our students, providing the perfect environment for them to thrive. We are one of the largest Departments in the UK, and the Mathematical Sciences Building houses state-of-the-art facilities, teaching rooms and study spaces.

Additional opportunities

Maths students at Queen Mary have the opportunity to undertake a Professional Placement Year, during which you'll spend one year on a paid work placement within an organisation, supported by the University. In recent years, our students have secured placements at EY, Goldman Sachs and Renault, among others.

We also offer you the chance to gain valuable skills through an additional Year Abroad at one of our partner institutions. Current options include studying in Australia, Canada, Hong Kong, Malaysia, New Zealand, Singapore, South Korea and the USA.

Joint programmes

We offer two joint programmes with the School of Business and Management – BSc Mathematics

with Finance and Accounting, and BSc Mathematics with Management. Studying a joint programme gives you the benefit of diverse academic and practical experience while bringing together complementary subjects.

Where could a mathematical sciences degree take you?

With a BSc from Queen Mary you will have excellent career prospects. The latest data shows that 91 per cent* of our School of Mathematical Sciences graduates are in work or further study within 15 months of graduation. The average starting salary for our graduates within six months of graduation is £26,900.*

Our flexible and wide range of abstract and real-world programmes allows you to shape your own career path.

In addition to postgraduate study and research, our graduates go on to work in a variety of roles, including financial investment analysts and advisors, chartered and certified accountants and business management professionals.

Our Actuarial Science programme is accredited by the Institute and Faculty of Actuaries (IFoA). Successful students gain exemptions from up to six

of the seven Core Principles examinations under the IFoA Curriculum 2019.

Our alumni have gone on to join prestigious organisations such as Dyson, J.P. Morgan, PwC, KPMG and the Financial Conduct Authority.

*Source: Graduate Outcomes Survey 2019/20



With more than 80 academic staff, we are **one of the largest mathematics departments** in the UK, offering you a huge choice of modules.

Learn more



About our programmes



Take a virtual tour of our building

A combination of a unique course offering and a campus community gave Queen Mary the edge for Shaun.

Shaun's journey to Queen Mary wasn't straightforward. Not only were his A-levels complicated by Covid-19, but he'd also not studied Further Maths, admitting this "was a bit of a fear of mine" when it came to the application process. But Shaun knew he wanted to study Actuarial Science at Queen Mary. He thought it was rare for a Russell Group university to offer this specific subject and he loved the campus environment. To overcome the obstacles he faced, "I had to work just a little bit harder than everyone else, which I'm perfectly OK to do."

It wasn't just that rare chance to study Actuarial Science that appealed to Shaun. The programme at Queen Mary prepares its students for life after university. "The Actuarial Professional Development Course brings in lots of professional actuaries from different

industries, so you can talk to them. It also gives you assignments to improve your CV and cover letter – it provides you with lots of opportunities to better yourself as a professional, which lots of unis just don't offer."

Actuarial Science has been the right fit for Shaun and his future ambitions. "I knew I didn't want to do anything particularly theoretical or anything majorly in person. I wanted to be someone that could calculate very specific things, build models and use lots of data." As well as the satisfaction he gets from his studies, Shaun describes how the Queen Mary community helped him settle in. "Once I got here the community was so fantastic and the faculty was so brilliant that it really didn't matter that I struggled, because any effort I made was made up tenfold by everything else around me."



Shaun
BSc Actuarial Science,
2nd year



Medicine

At Queen Mary, you'll be taught by experts in their field who are passionately engaged with their subject. We work closely with our diverse local community to address their health needs and improve their quality of life.

A diverse curriculum

Queen Mary's Faculty of Medicine and Dentistry brings together two venerable teaching institutions: St Bartholomew's Hospital, which dates back to 1123, and The London Hospital Medical College, founded in 1785 and the oldest medical school in England and Wales. The hospitals lie in two very different parts of London, exposing you to a more diverse range of people and health problems than at almost any other medical school in the UK. We also offer you the chance to study your MBBS degree in the Maltese islands, where our staff and students are contributing to the development of the health service for the region.

Our programme develops your expertise in a range of practical areas, including clinical,

communication, observation, teamwork and management skills. We have completely eliminated the traditional divide between preclinical studies and clinical years, which means that you will start seeing patients from your very first term. Our curriculum is taught through a series of modules that are based on body systems, which encompass various scientific and medical themes. Each body system is visited a minimum of three times during the programme.

Develop your own interests

Most students will have the opportunity to take an extra year of study leading to a Bachelor of Science (BSc) or Master of Science (MSc) degree. An intercalated degree, taken after successful completion of years

two, three or four, will allow you to gain a greater insight into the natural or social sciences that underpin medicine and dentistry. You can choose from courses offering laboratory research experience, or others providing specialised clinical and professional skills. An intercalated degree can give you a better understanding of your clinical studies, develop your interests in a particular field, and broaden your career choices when you graduate.

One of the most interesting aspects of our MBBS programmes is your elective period in year five, which you will spend studying in the UK or abroad. The elective period is self-funded and its cost varies depending on length and location.

What are we up to?

Our students work side-by-side with world-leading research scientists and pioneers in public healthcare, helping to change the lives of people across the world.

During the Covid-19 pandemic, our staff and students volunteered to support the NHS, process Covid-19 tests, and print personal protective equipment. Our researchers also identified the first drug, the steroid dexamethasone, to improve survival rates in certain coronavirus patients as part of a clinical trial, and developed new studies to identify who is most at risk of contracting and becoming seriously ill with the virus. Our academics have also undertaken research into the transmission, symptoms and effects of monkeypox; and how best to

control the spread through public health awareness and vaccination.

Meanwhile, in our wider research (often in collaboration with others in the UK and worldwide), Queen Mary experts have found that:

- Genes can predict patients' response to arthritis treatment and pave the way for future drug development;
- Hearing loss and epilepsy are early features of Parkinson's, which could enable more timely diagnosis and treatment;
- Whole genome sequencing can robustly detect the most common neurological diseases and is set to be adopted as a standard diagnostic tool in clinical practice;
- A new drug combination significantly reduced disease occurrence in patients with the



Our alumni

As a student, you're exposed to clinical situations early on, and learning communication skills is a primary focus of teaching, giving you a significant advantage among peers when you start building your portfolio for future specialisation. Ultimately, studying medicine at Queen Mary makes you a well-rounded clinician and, therefore, a better doctor to your patients.

**Pedram Kordrostami,
Junior Doctor (Clinical Fellow in
Dermatology)
MBBS Medicine,
2016**



Top 10 in the UK for medicine

**QS World University
Rankings by Subject 2022**

most aggressive type of breast cancer in a phase III clinical trial and;

- A new approach to traumatic brain injuries could revolutionise diagnosis and treatment of patients.

Fifth choice programmes

Did you know that you can apply to a fifth (non-medical) course as well as four medical courses via UCAS? You can also apply directly to our MBBS Medicine Malta degree in addition to your four UCAS options.

If you're looking for opportunities for your non-medicine UCAS fifth choice, the life sciences courses offered at Queen Mary could be the answer. Whether you aspire to solve medical or dental problems

through the development of innovative technology and devices, become a laboratory scientist, or get involved in shaping healthcare policies, these programmes offer you exciting routes into careers that are shaping the future of global healthcare:

- Biochemistry BSc/MSci
- Biology BSc
- Biomedical Engineering BEng/MEng
- Biomedical Sciences BSc
- Chemistry BSc/MSci
- Medical Genetics BSc
- Neuroscience BSc
- Pharmaceutical Chemistry BSc/MSci
- Pharmacology and Innovative Therapeutics BSc
- Psychology BSc
- Zoology BSc

Learn more



About our programme



About the Faculty



 **Blizard Institute**
Whitechapel campus

Medicine in London

 **Blizard Institute**
Whitechapel campus

Studying in London

Our scientific excellence and the unmatched medical opportunities that come from being in London put us in an unrivalled position to offer you the very best experience as a student, shaping the sort of doctor you will become. Studying in the capital means learning at the forefront of modern medicine. Our students get to experience all the challenges and opportunities that come with providing healthcare in an incredibly busy and diverse city.

Situated in Whitechapel next to The Royal London Hospital – one of the capital's leading trauma and emergency care centres and home to London's Air Ambulance – our medical School is perfectly located. We also have a purpose-built Clinical and Communications Skills Centre at our West Smithfield campus (St Bartholomew's Hospital)

for our medical students to practise clinical methods and practical skills using mannequins and models.

We're also opening a new satellite campus in Ilford, which will enable medical students to learn in both the classroom and a mock ward environment from 2023.

Clinical experience

You will develop your clinical skills through a variety of clinical attachments at The Royal London, St Bartholomew's and Homerton University hospitals, as well as further afield at hospitals in Greater London and Essex. Community general practice sessions are integrated into these hospital attachments, complementing your clinical skills teaching. This gives you useful practical experience within a diverse range of healthcare settings.

Learn more



Explore the
Whitechapel
campus



Student's view

I love how practical and hands-on the degree is – we start placements straight away in year one, and by year three we spend most of the year in hospital, learning from patients and doctors in real-life situations.

I feel like I am forging incredible friendships with the other students, and there is incredible support and mentoring from the staff as well.

Carola Maria Bigogno,
MBBS Medicine,
final year

Medicine in Malta



**View from Queen Mary
Malta campus**
Gozo, Malta

Why study with us?

Our five-year programme offers you a curriculum and qualification identical to that taught at Queen Mary in London. That said, there are specific benefits when studying for a medical degree in Malta.

London curriculum, Mediterranean lifestyle

The core curriculum of MBBS Malta is identical to Queen Mary's existing MBBS in London (A100). This includes early in-depth clinical experience, problem-based learning, practical sessions in laboratories, and opportunities to undertake an intercalated undergraduate science degree at Queen Mary's London campus. There is the possibility to undertake student selected components in London too.

You will take the same assessments at the same time as MBBS students in London and, on successful completion of the five-year programme, you will be awarded a Medicine MBBS from Queen Mary University of London. The programme is taught by academic staff based in Malta. A few of our academics have taught in London for years and have now moved to Malta to deliver the same programme. In addition, a growing number of academics who have worked elsewhere in the world have specifically joined us in order to teach on the Malta course. As is true on the London

course, local clinicians are also employed throughout the year to deliver clinical teaching.

State-of-the-art facilities

Our medical School is situated in Victoria, on the grounds of the Gozo General Hospital. Our facilities include a clinical simulation centre, communication skills suite, three large lecture theatres, two PC labs, seminar rooms, a library, staff offices, a student common room, and a rooftop café.

A supportive community

Students at Queen Mary Malta form a tightly knit community with a great sense of camaraderie. This is also reflected in the small study groups, which make personalised support and close mentoring possible.

Life on the island

The Queen Mary Malta campus is situated on the island of Gozo, a 25 minute ferry ride from the main island, Malta. Gozo is well-known for its splendid beaches, walks, cultural events, tranquillity and safety. Like Malta, it enjoys 300 days of sunshine a year, and the cost of living is relatively low compared to London.

Applying to study in Malta

You apply directly to Queen Mary for the MBBS Medicine in Malta via our website. This means you can apply to Malta in addition to your four UCAS medicine choices.



Our alumni

Having the opportunity to study abroad and to be part of a new community in Malta is particularly exciting. The course structure stands out with its variety of teaching methods, including traditional lecture styled teaching, clinically based teaching, practicals and problem-based learning.

**Dr Marie-Sophie Gomm,
MBBS Malta Graduate,
2022**

Learn more



About Queen
Mary in Malta



How to
apply

Modern Languages and Cultures

Our modern languages programmes focus on culture and identity alongside the workings of the languages themselves. You'll immerse yourself in language and culture, studying literature, film, and even philosophy, as much as grammar and translation.

Our programmes

You can study single and combined honours degrees involving our main language areas of French, German, Russian and Spanish, with Chinese and Portuguese also offered in combination with another language. Our BA Modern Languages also offers the opportunity to study a third language as a minor subject, adding Catalan, Japanese and Modern Arabic to the mix.

You'll be encouraged to engage with the languages and cultures you study through different media and activities extending beyond the classroom.

Year Abroad

All of our modern languages programmes include a Year Abroad. This experience is a big

part of what makes studying modern languages such an enriching experience.

It's an opportunity to immerse yourself in a new culture and perfect your language skills. It also helps to develop transferable skills valued by employers, such as cross-cultural awareness, independence, problem solving and resilience.

Worldwide connections

Our strong connections with cultural and academic institutions worldwide ensure our research remains at the cutting edge. We work on the representation of French culture in close collaboration with London institutions such as Tate Modern and the Institut Français. Students of Catalan studies benefit from our connections

with the Institut Ramon Llull and the government of the Balearic Islands. Our links with German companies, such as BASF, support the study of Anglo-German cultural relations, while our relationship with the German-British Chamber of Industry and Commerce provides attractive career options for students.

Our School runs a number of events programmes, including our long-standing Medieval Hispanic Research Seminars. We also hold the UK's largest collections of Lusophone cinemas (Portuguese, Brazilian and Portuguese-Speaking African films), and conduct original research on Brazil's major social movements (quilombola communities and the Theatre of the Oppressed).

Joint programmes

French, German, Hispanic Studies and Russian are all available as joint programmes with comparative literature, film studies, linguistics or politics. You can also study a modern language with business management, with 70 per cent of your studies devoted to your language.

Where could modern languages and culture take you?

Language skills and cultural awareness can give you a real advantage in the job market,

along with opportunities to work in other countries. Some of our graduates apply their knowledge directly, entering careers in journalism, interpreting and teaching. Others transfer their skills into the arts, publishing, finance, business or IT.

Our recent graduates have been hired by Condé Nast, Kea Consultants, the League Managers Association, and Transport for London.



Our alumni

I chose Queen Mary mainly due its reputation as a Russell Group university, the attractive programme structure and modules. The fact that I was given the liberty to also nominate some electives meant that I was able to explore other subjects such as Spanish, history of art and even coding.

Trisha Mason,
Senior Customer Success Manager and Team Lead at Darktrace,
BA French with Business Management,
2018

90%

The proportion of our most recent BA French graduates **in work or further study 15 months after graduation**

Graduate Outcomes Survey 2019/20

Learn more



About the School



About the Department



About the subject

Physics and Astronomy

From finding our nearest exoplanet, Proxima b, to aiding in the discovery of the Higgs boson, the Department of Physics and Astronomy has long brought people together to make world-changing discoveries.



Our alumni

After graduating from Queen Mary, I completed a masters in Sustainable Energy Futures, followed by an internship as an energy market analyst at a grid-scale battery storage company. I am now a graduate project engineer at Vattenfall UK, and am part of two separate committees within the Energy Institute.

María Sánchez-Pinilla,
BSc Astrophysics,
2017

Our degrees combine academic rigour with a comprehensive programme of careers and employability activities, all within a friendly and supportive environment. All of our programmes are accredited by the Institute of Physics, which ensures consistently high academic standards.

You will be taught by academics working on high-profile international collaborations, including experiments at CERN. Our researchers search for new planets and develop new theoretical concepts.

What are we up to?

During his time at Queen Mary, Dr Guillem Anglada-Escudé made it onto *Time* magazine's list of the 100 most influential people, after he led a team of scientists

to discover a new planet orbiting our Solar System's nearest star, Proxima Centauri. Using facilities operated by the European Southern Observatory and other telescopes, the research revealed a world with a similar mass to Earth.

The planet, called Proxima b, orbits its parent star every 11 days and has a temperature suitable for liquid water to exist on its surface. It is slightly larger than Earth and is the closest planet outside our Solar System.

The discovery was quickly recognised as one of the most exciting in years and, as Dr Anglada-Escudé explained: "Succeeding in the search for the nearest terrestrial planet beyond our Solar System has been an experience of a lifetime,

and has drawn on the dedication and passion of a number of international researchers. We hope these findings inspire future generations to keep looking beyond the stars. The search for life on Proxima b comes next."

Where could physics and astronomy take you?

Our programmes are flexible, so you can pick modules in line with your preferred specialism, preparing you for careers in diverse fields of physics. The skills you'll develop – such as numeracy, data analysis, coding and problem solving – are also highly transferable into other sectors, including energy, business, marketing, engineering, technology, IT and finance. Many graduates continue their studies with

an MSc and PhD, often as a precursor to a career in research.

Our new Data Science programmes have been designed specifically to answer the needs of industry. As companies, governments, non-profits, and research organisations begin to adjust to the massive amounts of data that are becoming available, graduates with a background in data science are increasingly in demand.

Students have the opportunity to develop Python programming

skills, learn how to apply advanced machine learning and artificial intelligence techniques, and gain insight from any kind of data using a toolkit of practical data analysis methods, alongside the core topics of a Physics degree.

Recent graduates of the Department of Physics and Astronomy have been employed by the UK Space Agency, JPMorgan Chase, European Astronaut Centre, Airbus and IBM.



Dr Chris Chen, lecturer in Space Plasma Physics at Queen Mary, has won the **Macelwane Medal for advancing and promoting the field of space science.**

Learn more



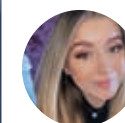
About our programmes



Take a virtual tour of our building

Politics and International Relations

Our London location means that you'll benefit from a range of high-profile visiting speakers from think tanks, national political institutions and party headquarters. Regular events give our students the chance to engage with Westminster, Whitehall and the third sector.



Our alumni

I chose to study Politics and International Relations because I want to extend my knowledge of one of the most powerful forces operating on our society. I love that this programme allows me to construct my own opinions on real-life matters, which I can then discuss and debate with others.

**Lorena-Florina Vlad,
BA Politics and International Relations,
2022**



We've been ranked **7th overall in the UK** for Politics and International Studies

Research Excellence Framework 2021

*Please see qmul.ac.uk/politics for eligibility requirements

Build a degree around your interests

Our flexible modular system means that as well as benefitting from specialist teaching, you get the freedom to shape your own programme of study – which can include the chance to work with a member of parliament or civil society.* You'll also be helped by your academic Advisor along the way.

You'll also benefit from the public events of the Mile End Institute and the Centre for European Research, both based at Queen Mary. The Institute and the Centre bring together politicians, policy makers, academics, students and the public to debate major issues in British and European politics.

What are we up to?

Professor Sophie Harman, Professor of International Politics says: "I am interested in the politics as to why people die or get sick when they don't have to. You can't understand this without understanding the global politics that define which health issues matter, shape how people lead healthy lives, or turn a blind eye to people and issues on the margins of everyday politics.

"I started to explore this issue first by looking at the role of large international donor institutions such as the World Bank, and one of the biggest global health issues of our time, HIV/AIDS, and have since explored the intricacies of global health governance, Ebola and the military, gender and women's health, and African agency in shaping global politics.

Frustrated with the continued invisibility of people's lives in global health politics, I made a feature film to draw attention to women living with HIV/AIDS."

Joint programmes

Studying politics goes hand-in-hand with a number of subjects, and students are able to complement and refine their studies with programmes run jointly with the School of Economics and Finance, School of Modern Languages, School of Law, School of History, and School of Business and Management.

Study abroad

Our students can choose to apply for a four-year version of most of our programmes, with a full Year Abroad. You pay reduced fees during your Year Abroad, which is spent studying with one of our

prestigious partner institutions in Europe, North America, Australia, or Asia (specific partnerships for each programme may vary).

Where could politics and international relations take you?

Our graduates go on to work or study in a wide variety of careers. Some apply their degree knowledge directly, entering sectors such as government, charities or lobbying and public affairs,

while others work in policy research, campaigning, or the commercial arena.

Your time with us will equip you with all sorts of transferable skills that are valued by employers. Politics, after all, is all about logical and critical thinking, and making sense of complicated issues and relationships. Recent graduates have found jobs with the House of Commons, the Home Office, the Labour Party and PwC.

Learn more



About the School



About the subject

Psychology

Our biological and neuroscientific emphasis sets us apart from many other psychology degrees, which are often based within social science departments. Our programme prepares you for further study and careers in biological and medical sciences, social sciences and humanities.

Our approach

Psychology at Queen Mary is taught as part of the School of Biological and Behavioural Sciences. We treat the topic as a natural and experimental science, whether you approach it from the perspective of psychology (perception, cognition, communication and social life) or neuroscience (anatomy, physiology, biochemistry, genetics and pharmacology).

You'll learn about cognitive, social, developmental and abnormal psychology and then apply this knowledge in topics such as counselling and health psychology. You'll also explore the origins of the human mind and behaviour, drawing on animal cognition, neuroscience and behavioural genetics and epigenetics.

Our psychology programme is accredited by the British Psychological Society, meaning our graduates are eligible for Graduate Basis for Chartered Membership – an entry requirement for the postgraduate and training programmes that lead to becoming a fully Chartered Psychologist.

The option of studying BSc Psychology with Professional Experience allows you to spend a year working in a professional position as part of your degree. This is available to transfer on to provided you achieve a satisfactory academic result in your first year. As well as helping you to stand out from the crowd and secure graduate employment, professional experience is an excellent opportunity to develop real-world skills and put your

learning into context. Students have undertaken professional experience positions in a range of sectors, including hospital clinics, mental health charities, HR, market research, youth centres, government and clinical research labs.

There is also the option to go global and undertake a Year Abroad. Queen Mary has links with universities in Europe, North America, Asia and Australia.

What are we up to?

We know that people can respond very differently to adversity, with some individuals developing stress-related conditions such as depression, while others are able to maintain good mental health and show psychological resilience despite adversity.

A recent study from Queen Mary researchers Dr Demelza Smeeth and Professor Michael Pluess has explored how events in our lives could affect the way our genes work and how we respond to adversity.

The researchers developed a theoretical model to show how epigenetics – changes to the activity of our genes – can influence how resilient we are. They show that our resilience can be affected by epigenetics at three main stages during

our lifetime: certain epigenetic differences are set at birth; these can then change in response to our environment during infancy and childhood; and protective factors we're exposed to during times of adversity can also have an impact.

This work has helped to explain how aspects of our environment can become biologically embedded and contribute to the development of psychological resilience, as well as highlighting future areas for further research.

Learn more



About the School



About the subject



Student's view

I love how the psychology course at Queen Mary is scientifically orientated, unlike other universities which focus on humanities. This quality drew me towards QMUL, as my desired career is to become a neuropsychologist.

Shazia Jaufarally,
BSc Psychology,
3rd year

88%

The proportion of our most recent BA Psychology graduates **in work or further study 15 months after graduation**

Graduate Outcomes Survey 2019/20



Our BSc Psychology is **accredited by the British Psychological Society**

Degree programmes

International Baccalaureate (IB) requirements: HL = Higher Level, SL = Standard Level
English language (ESL) requirements: W = Writing, R = Reading, L = Listening, S = Speaking

This information is accurate at the time of publishing. Please see our website for the most up-to-date information.

Biological and Biomedical Sciences						
BSc (Hons) Biochemistry UCAS code C700 Website qmul.ac.uk/C700						
Duration ¹ 3 years	Year Abroad C70Y	Related courses Foundation - CCX2; Year in Industry/Research - 3W45		A-level requirements ² ABB including Chemistry	IB requirements 34 points, 655 at HL including Chemistry	ESL requirements 6.5 overall, 6.0 in W, 5.5 in R, L, S
MSci (Hons) Biochemistry UCAS code C701 Website qmul.ac.uk/C701						
Duration ¹ 4 years	Year Abroad C71Y	Related courses -		A-level requirements ² AAB including Chemistry	IB requirements 35 points overall, 665 at HL including Chemistry	ESL requirements 6.5 overall, 6.0 in W, 5.5 in R, L, S
BSc (Hons) Biology UCAS code C100 Website qmul.ac.uk/C100						
Duration ¹ 3 years	Year Abroad C10Y	Related courses Foundation - CCX2		A-level requirements ² ABB including Biology	IB requirements 34 points overall, 655 at HL including Biology	ESL requirements 6.5 overall, 6.0 in W, 5.5 in R, L, S
BSc (Hons) Biomedical Sciences UCAS code B990 Website qmul.ac.uk/B990						
Duration ¹ 3 years	Year Abroad B99Y	Related courses Foundation - CCX2		A-level requirements ² AAB including Biology. A second science subject of Chemistry, Maths, Further Maths, Physics or Psychology is also required	IB requirements 35 points overall, 665 at HL including Biology. A second science subject at Higher Level of Chemistry, Maths, Further Maths, Physics or Psychology is also required	ESL requirements 6.5 overall, 6.0 in W, 5.5 in R, L, S
BSc (Hons) Medical Genetics UCAS code C431 Website qmul.ac.uk/C431						
Duration ¹ 3 years	Year Abroad C43Y	Related courses Foundation - CCX2		A-level requirements ² ABB including Biology	IB requirements 34 points overall, 655 at HL including Biology	ESL requirements 6.5 overall, 6.0 in W, 5.5 in R, L, S
BSc (Hons) Neuroscience UCAS code B140 Website qmul.ac.uk/B140						
Duration ¹ 3 years	Year Abroad B14Y	Related courses Foundation - CCX2		A-level requirements ² ABB including Biology or Chemistry. A second science subject of Biology, Chemistry, Maths or Physics is also required	IB requirements 34 points overall, 655 at HL including Biology and Chemistry	ESL requirements 6.5 overall, 6.0 in W, 5.5 in R, L, S
BSc (Hons) Pharmacology and Innovative Therapeutics UCAS code B211 Website qmul.ac.uk/B211						
Duration ¹ 3 years	Year Abroad B21Y	Related courses Foundation - CCX2; Year in Industry - B2Y1		A-level requirements ² ABB including Biology or Chemistry. A second science subject of Biology, Chemistry, Maths or Physics is also required	IB requirements 34 points overall, 655 at HL including Biology and Chemistry	ESL requirements 6.5 overall, 6.0 in W, 5.5 in R, L, S
BSc (Hons) Zoology UCAS code C300 Website qmul.ac.uk/C300						
Duration ¹ 3 years	Year Abroad C30Y	Related courses Foundation - CCX2		A-level requirements ² ABB including Biology	IB requirements 34 points overall, 655 at HL including Biology	ESL requirements 6.5 overall, 6.0 in W, 5.5 in R, L, S
Business and Management						
BSc (Hons) Accountancy UCAS code N403 Website qmul.ac.uk/N403						
Duration ¹ 4 years (paid work in years 2, 3 and 4)	Year Abroad -	Related courses -		A-level requirements ² AAA. For full details of the entry requirements, please visit qmul.ac.uk/N403	IB requirements 36 points, 666 in HL, including 5 in SL Mathematics	ESL requirements 6.5 overall including 5.5 in R, W, L and S
BSc (Hons) Accounting and Finance UCAS code N400 Website qmul.ac.uk/N400						
Duration ¹ 3 years	Year Abroad -	Related courses Foundation - N401		A-level requirements ² AAA	IB requirements 36 points, 666 at HL, including 5 in SL Mathematics	ESL requirements 6.5 overall, 5.5 in all components
BSc (Hons) Accounting and Management UCAS code 4P20 Website qmul.ac.uk/4P20						
Duration ¹ 3 years	Year Abroad -	Related courses Foundation - 4P21		A-level requirements ² AAA	IB requirements 36 points, 666 at HL, including 4 in SL Mathematics	ESL requirements 6.5 overall, 5.5 in all components

BSc (Hons) Business Management			UCAS code NN12	Website qmul.ac.uk/NN12			
Duration ¹ 3 years	Year Abroad -	Related courses Foundation - NN13; Year in Industry - NN16			A-level requirements ² AAA	IB requirements 36 points, 666 at HL, including 4 in SL Mathematics	ESL requirements 6.5 overall, 5.5 in all components
BSc (Hons) Business Management with Chinese and Year Abroad			UCAS code N123	Website qmul.ac.uk/N123			
Duration ¹ 4 years	Year Abroad Yes	Related courses -			A-level requirements ² AAA	IB requirements 36 points, 666 at HL, including 4 in SL Mathematics	ESL requirements 6.5 overall, 5.5 in all components
BSc (Hons) Business with Law			UCAS code NM11	Website qmul.ac.uk/NM11			
Duration ¹ 3 years	Year Abroad -	Related courses -			A-level requirements ² AAA	IB requirements 36 points, 666 at HL, including 4 in SL Mathematics	ESL requirements 6.5 overall, 5.5 in all components
BA (Hons) French with Business Management			UCAS code R1N1	Website qmul.ac.uk/R1N1			
Duration 4 years	Year Abroad Yes	Related courses -			A-level requirements ² ABB, including at least one essay-based subject in humanities or social sciences	IB requirements 32 points, 655 at HL including an essay-based humanities or social sciences subject	ESL requirements 7.0 overall, 7.0 in W, 5.5 in R, L, S
BA (Hons) German with Business Management			UCAS code R2N1	Website qmul.ac.uk/R2N1			
Duration 4 years	Year Abroad Yes	Related courses -			A-level requirements ² ABB, including at least one essay-based subject in humanities or social sciences	IB requirements 32 points, 655 at HL including an essay-based humanities or social sciences subject	ESL requirements 7.0 overall, 7.0 in W, 5.5 in R, L, S
BA (Hons) Hispanic Studies with Business Management			UCAS code R4N1	Website qmul.ac.uk/R4N1			
Duration 4 years	Year Abroad Yes	Related courses -			A-level requirements ² ABB, including at least one essay-based subject in humanities or social sciences	IB requirements 32 points, 655 at HL including an essay-based humanities or social sciences subject	ESL requirements 7.0 overall, 7.0 in W, 5.5 in R, L, S
BSc (Hons) International Business with Year Abroad			UCAS code N120	Website qmul.ac.uk/N120			
Duration ¹ 4 years	Year Abroad -	Related courses Foundation - N121			A-level requirements ² AAA	IB requirements 36 points, 666 at HL, including 5 in SL Mathematics	ESL requirements 6.5 overall, 5.5 in all components
BSc (Hons) Marketing and Management			UCAS code 4G44	Website qmul.ac.uk/4G44			
Duration ¹ 3 years	Year Abroad -	Related courses Foundation - 4G45; Year in Industry - 4G46			A-level requirements ² AAA	IB requirements 36 points, 666 at HL, including 4 in SL Mathematics	ESL requirements 6.5 overall, 5.5 in all components
BA (Hons) Russian with Business Management			UCAS code R1N7	Website qmul.ac.uk/R1N7			
Duration 4 years	Year Abroad Yes	Related courses -			A-level requirements ² ABB, including at least one essay-based subject in humanities or social sciences	IB requirements 32 points, 655 at HL including an essay-based humanities or social sciences subject	ESL requirements 7.0 overall, 7.0 in W, 5.5 in R, L, S
Chemical Sciences							
BSc (Hons) Chemistry			UCAS code F100	Website qmul.ac.uk/F100			
Duration ¹ 3 years	Year Abroad F10Y	Related courses Foundation - FFX2; Year in Industry/Research - 9A32			A-level requirements ² AAB-ABB including Chemistry	IB requirements 34-35 points overall, 665-655 at HL including Chemistry	ESL requirements 6.0 overall with 5.5 in W, R, L, S
MSci (Hons) Chemistry			UCAS code F103	Website qmul.ac.uk/F103			
Duration ¹ 4 years	Year Abroad F13Y	Related courses -			A-level requirements ² AAB including Chemistry	IB requirements 35 points overall, 665 at HL including Chemistry	ESL requirements 6.0 overall with 5.5 in W, R, L, S
BSc (Hons) Pharmaceutical Chemistry			UCAS code F154	Website qmul.ac.uk/F154			
Duration ¹ 3 years	Year Abroad F15Y	Related courses Foundation - FFX2; Year in Industry/Research - 2L22			A-level requirements ² AAB-ABB including Chemistry	IB requirements 34-35 points overall, 665-655 at HL including Chemistry	ESL requirements 6.0 overall with 5.5 in W, R, L, S
MSci (Hons) Pharmaceutical Chemistry			UCAS code F152	Website qmul.ac.uk/F152			
Duration ¹ 4 years	Year Abroad F12Y	Related courses -			A-level requirements ² AAB including Chemistry	IB requirements 35 points overall, 665 at HL including Chemistry	ESL requirements 6.0 overall with 5.5 in W, R, L, S

Comparative Literature							
BA (Hons) Comparative Literature			UCAS code Q200	Website qmul.ac.uk/Q200			
Duration ¹ 3 years	Year Abroad Q201	Related courses -			A-level requirements² BBB, including at least one essay based subject in humanities or social sciences	IB requirements 30 points, 555 at HL including an essay-based humanities or social sciences subject	ESL requirements 7.0 overall, 7.0 in W, 5.5 in R, L, S
BA (Hons) Comparative Literature and Film Studies			UCAS code QP23	Website qmul.ac.uk/QP23			
Duration ¹ 3 years	Year Abroad QP2Y	Related courses -			A-level requirements² ABB, including at least one essay-based subject in humanities or social sciences	IB requirements 32 points, 655 at HL including an essay-based humanities or social sciences subject	ESL requirements 7.0 overall, 7.0 in W, 5.5 in R, L, S
BA (Hons) Comparative Literature and Linguistics			UCAS code QQ21	Website qmul.ac.uk/QQ21			
Duration ¹ 3 years	Year Abroad QQ2Y	Related courses -			A-level requirements² ABB, including at least one essay-based subject in humanities or social sciences	IB requirements 32 points, 655 at HL including an essay-based humanities or social sciences subject	ESL requirements 7.0 overall, 7.0 in W, 5.5 in R, L, S
BA (Hons) French and Comparative Literature			UCAS code RQ12	Website qmul.ac.uk/RQ12			
Duration 4 years	Year Abroad Yes	Related courses -			A-level requirements² BBB, including at least one essay-based subject in humanities or social sciences	IB requirements 30 points, 555 at HL including an essay-based humanities or social sciences subject	ESL requirements 7.0 overall, 7.0 in W, 5.5 in R, L, S
BA (Hons) German and Comparative Literature			UCAS code QR22	Website qmul.ac.uk/QR22			
Duration 4 years	Year Abroad Yes	Related courses -			A-level requirements² BBB, including at least one essay-based subject in humanities or social sciences	IB requirements 30 points, 555 at HL including an essay-based humanities or social sciences subject	ESL requirements 7.0 overall, 7.0 in W, 5.5 in R, L, S
BA (Hons) Hispanic Studies and Comparative Literature			UCAS code QR24	Website qmul.ac.uk/QR24			
Duration 4 years	Year Abroad Yes	Related courses -			A-level requirements² BBB, including at least one essay-based subject in humanities or social sciences	IB requirements 30 points, 555 at HL including an essay-based humanities or social sciences subject	ESL requirements 7.0 overall, 7.0 in W, 5.5 in R, L, S
BA (Hons) Liberal Arts			UCAS code V901	Website qmul.ac.uk/V901			
Duration ¹ 3 years	Year Abroad V902	Related courses Year in Industry - V903			A-level requirements² BBB, including at least one essay-based subject in humanities or social sciences	IB requirements 30 points, 555 at HL including an essay-based humanities or social sciences subject	ESL requirements 7.0 overall, 7.0 in W, 5.5 in R, L, S
BA (Hons) Russian and Comparative Literature			UCAS code QR72	Website qmul.ac.uk/QR72			
Duration 4 years	Year Abroad Yes	Related courses -			A-level requirements² BBB, including at least one essay-based subject in humanities or social sciences	IB requirements 30 points, 555 at HL including an essay-based humanities or social sciences subject	ESL requirements 7.0 overall, 7.0 in W, 5.5 in R, L, S
Computer Science and Electronic Engineering							
BSc (Hons) Computer Science			UCAS code G400	Website qmul.ac.uk/G400			
Duration ¹ 3 years	Year Abroad G40Y	Related courses Year in Industry - G402			A-level requirements² AAA. This must include one of A-level Mathematics, Computer Science, or Physics	IB requirements 36 points, 666 at HL. Including either Mathematics, Computer Science, or Physics at HL	ESL requirements 6.0 overall, 5.5 in all components
MSci (Hons) Computer Science			UCAS code G401	Website qmul.ac.uk/G401			
Duration ¹ 4 years	Year Abroad G41Y	Related courses -			A-level requirements² A*AA. This must include one of A-Level Mathematics, Computer Science, or Physics	IB requirements 36 points, 666 at HL. Including either Mathematics, Computer Science, or Physics at HL	ESL requirements 6.0 overall, 5.5 in all components

BSc (Hons) Computer Science and Artificial Intelligence			UCAS code I400	Website qmul.ac.uk/I400		
Duration¹ 3 years	Year Abroad I40A	Related courses Year in Industry - I40Y		A-level requirements² AAA. This must include one of A-level Mathematics, Computer Science, or Physics	IB requirements 36 points, 666 at HL. Including either Mathematics, Computer Science, or Physics at HL	ESL requirements 6.0 overall, 5.5 in all components
BSc (Hons) Computer Science and Mathematics			UCAS code GG41	Website qmul.ac.uk/GG41		
Duration¹ 3 years	Year Abroad GG4Y	Related courses Year in Industry - IG41		A-level requirements² AAA. This must include A-level Mathematics	IB requirements 36 points, 666 at HL including HL Mathematics	ESL requirements 6.0 overall, 5.5 in all components
BSc (Hons) Computer Science with Management (ITMB)			UCAS code I9N1	Website qmul.ac.uk/I9N1		
Duration¹ 3 years	Year Abroad I9N2	Related courses Year in Industry - I9NY		A-level requirements² AAA. This must include one of A-level Mathematics, Computer Science, or Physics	IB requirements 36 points, 666 at HL. Including either Mathematics, Computer Science, or Physics at HL	ESL requirements 6.0 overall, 5.5 in all components
BSc (Hons)/Degree Apprenticeship Digital and Technology Solutions (Data Analyst)			UCAS code G4DA	Website qmul.ac.uk/G4DA		
Duration¹ 4 years	Year Abroad -	Related courses -		A-level requirements² AAB. Alternatively, ABB including either Mathematics or Computer Science	IB requirements 34 points, 665 at HL. Alternatively, 32 points overall, 655 at HL including Mathematics or Computer Science	ESL requirements GCSE 4/C or accepted equivalent
BSc (Hons)/Degree Apprenticeship Digital and Technology Solutions (Software Engineer)			UCAS code G4DE	Website qmul.ac.uk/G4DE		
Duration¹ 4 years	Year Abroad -	Related courses -		A-level requirements² AAB. Alternatively, ABB including either Mathematics or Computer Science	IB requirements 34 points, 665 at HL. Alternatively, 32 points overall, 655 at HL including Mathematics or Computer Science	ESL requirements GCSE 4/C or accepted equivalent
BEng (Hons) Electrical and Electronic Engineering			UCAS code H600	Website qmul.ac.uk/H600		
Duration¹ 3 years	Year Abroad H60Y	Related courses Foundation - HHX0; Year in Industry - H602		A-level requirements² ABB including Mathematics and a second science subject, preferably Physics, Electronics or Computing	IB requirements 32 points, 655 at HL including Mathematics and a second relevant science subject	ESL requirements 6.0 overall, 5.5 in all components
MEng (Hons) Electrical and Electronic Engineering			UCAS code H608	Website qmul.ac.uk/H608		
Duration¹ 4 years	Year Abroad -	Related courses -		A-level requirements² AAB including Mathematics and a second science subject, preferably Physics, Electronics or Computing	IB requirements 34 points, 665 at HL including Mathematics and a second relevant science subject at HL	ESL requirements 6.0 overall, 5.5 in all components
BEng (Hons) Electronic Engineering			UCAS code H610	Website qmul.ac.uk/H610		
Duration 3 years	Year Abroad H61Y	Related courses Foundation - HHX0; Year in Industry - H611		A-level requirements² ABB including Mathematics and a second science subject, preferably Physics, Electronics or Computing	IB requirements 32 points, 655 at HL including Mathematics and a second relevant science subject	ESL requirements 6.0 overall, 5.5 in all components
BEng (Hons) Computer Systems Engineering			UCAS code HI62	Website qmul.ac.uk/HI62		
Duration¹ 3 years	Year Abroad HI6Y	Related courses Foundation - HHX0; Year in Industry - H163		A-level requirements² ABB including Mathematics	IB requirements 32 points, 655 at HL including Mathematics and a second relevant science subject	ESL requirements 6.0 overall, 5.5 in all components

Dentistry							
BDS Dentistry			UCAS code A200	Website qmul.ac.uk/A200			
Duration ¹ 5 years	Year Abroad -	Related courses -			A-level requirements² A*AA including Biology or Chemistry, and a second science from Biology, Chemistry, Physics or Mathematics. Results must be achieved in one sitting over a period of no longer than two years	IB requirements 38 points, 666 at HL including Biology or Chemistry, and a second science or Mathematics	ESL requirements 7.0 overall, 6.5 in W, 5.5 in R, L, S
BSc (Hons) Oral Health			UCAS code A910	Website qmul.ac.uk/A910			
Duration ¹ 3 years	Year Abroad -	Related courses -			A-level requirements² ABB including Biology	IB requirements 32 points, 655 at HL including Biology	ESL requirements 7.0 overall, 6.5 in W, 5.5 in R, L, S
Drama							
BA (Hons) Drama			UCAS code W400	Website qmul.ac.uk/W400			
Duration ¹ 3 years	Year Abroad W401	Related courses -			A-level requirements² BBB including at least one arts, humanities or social sciences subject	IB requirements 30 points overall with 555 at HL including at least one arts, humanities or social sciences subject	ESL requirements 7.0 overall, 6.5 in W, 5.5 in R, L, S
BA Drama and History			UCAS code WV01	Website qmul.ac.uk/WV01			
Duration ¹ 3 years	Year Abroad WV0F	Related courses -			A-level requirements² ABB including at least one arts, humanities or social sciences subject	IB requirements 32 points, 655 at HL including at least one arts, humanities or social sciences subject	ESL requirements 7.0 overall, 6.5 in W, 5.5 in R, L, S
BA Drama with Creative Writing			UCAS code WW44	Website qmul.ac.uk/WW44			
Duration ¹ 3 years	Year Abroad WW45	Related courses -			A-level requirements² BBB, including at least one arts, humanities or social sciences subject	IB requirements 30 points, 555 at HL including at least one arts, humanities or social sciences subject	ESL requirements 7.0 overall, 6.5 in W, 5.5 in R, L, S
BA (Hons) English and Drama			UCAS code QW34	Website qmul.ac.uk/QW34			
Duration ¹ 3 years	Year Abroad QW4Y	Related courses -			A-level requirements² ABB, including A or above in English Literature, English Language and Literature or English Language	IB requirements 32 points, 655 at HL including a minimum of 6 in HL English A	ESL requirements 7.0 overall, 6.5 in W, 5.5 in R, L, S
BA (Hons) Film Studies and Drama			UCAS code WW46	Website qmul.ac.uk/WW46			
Duration ¹ 3 years	Year Abroad WW4Y	Related courses -			A-level requirements² ABB, including at least one essay-based subject in humanities or social sciences	IB requirements 32 points, 655 at HL including a minimum of 6 in at least one arts, humanities or social sciences subject at HL and an essay-based humanities or social sciences subject at HL	ESL requirements 7.0 overall, 6.5 in W, 5.5 in R, L, S
Economics and Finance							
BSc (Econ)(Hons)/Degree Apprenticeship Applied Finance*			UCAS code TBC	Website TBC			
Duration ¹ 4 years	Year Abroad -	Related courses -			A-level requirements² AAA including Mathematics. Excludes Use of Mathematics	IB requirements 36 points, 666 at HL, including 6 in SL Mathematics, if not being studied at HL. Excludes Maths Studies	ESL requirements GCSE B/5 or accepted equivalent
BSc (Econ)(Hons) Economics			UCAS code L100	Website qmul.ac.uk/L100			
Duration ¹ 3 years	Year Abroad L10Y	Related courses Year in Industry - L109			A-level requirements² AAA including Mathematics. Excludes Use of Mathematics	IB requirements 36 points, 666 at HL, including 6 in SL Mathematics, if not being studied at HL. Excludes Maths Studies	ESL requirements 6.5 overall, 6.0 in W, 5.5 in R, L, S
BSc (Econ)(Hons) Economics with Integrated Foundation Year			UCAS code L10F	Website qmul.ac.uk/L10F			
Duration ¹ 4 years	Year Abroad L10X	Related courses Year in Industry - L108					For full details of the entry requirements, please visit qmul.ac.uk/L10F

BSc (Econ)(Hons) Economics with Integrated Foundation Year (January start)			UCAS code L10G	Website qmul.ac.uk/L10G			
Duration ¹ 4 years	Year Abroad L10Z	Related courses Year in Industry - L107	For full details of the entry requirements, please visit qmul.ac.uk/L10G				
BSc (Econ)(Hons) Economics and Finance			UCAS code LN13	Website qmul.ac.uk/LN13			
Duration ¹ 3 years	Year Abroad LN3Y	Related courses Year in Industry - L1N3	A-level requirements² AAA including Mathematics. Excludes Use of Mathematics	IB requirements 36 points, 666 at HL, including 6 in SL Mathematics, if not being studied at HL. Excludes Maths Studies	ESL requirements 6.5 overall, 6.0 in W, 5.5 in R, L, S		
BSc (Econ)(Hons) Economics and Finance with Integrated Foundation Year			UCAS code LN3F	Website qmul.ac.uk/LN3F			
Duration ¹ 4 years	Year Abroad LN3X	Related courses Year in Industry - L1N4	For full details of the entry requirements, please visit qmul.ac.uk/LN3F				
BSc (Econ)(Hons) Economics and Finance with Integrated Foundation Year (January start)			UCAS code LN3G	Website qmul.ac.uk/LN3G			
Duration ¹ 4 years	Year Abroad LN3Z	Related courses Year in Industry - L1N5	For full details of the entry requirements, please visit qmul.ac.uk/LN3G				
BSc (Econ)(Hons) Economics and International Finance			UCAS code L13N	Website qmul.ac.uk/L13N			
Duration ¹ 3 years	Year Abroad L1NY	Related courses Year in Industry - L19N	A-level requirements² AAA including Mathematics. Excludes Use of Mathematics	IB requirements 36 points, 666 at HL, including 6 in SL Mathematics, if not being studied at HL. Excludes Maths Studies	ESL requirements 6.5 overall, 6.0 in W, 5.5 in R, L, S		
BSc (Econ)(Hons) Economics and International Finance with Integrated Foundation Year			UCAS code L1NF	Website qmul.ac.uk/L1NF			
Duration ¹ 4 years	Year Abroad L1NX	Related courses Year in Industry - L18N	For full details of the entry requirements, please visit qmul.ac.uk/L1NF				
BSc (Econ)(Hons) Economics and International Finance with Integrated Foundation Year (January start)			UCAS code L1NG	Website qmul.ac.uk/L1NG			
Duration ¹ 4 years	Year Abroad L1NZ	Related courses Year in Industry - L17N	For full details of the entry requirements, please visit qmul.ac.uk/L1NG				
BSc (Econ)(Hons) Economics and International Relations			UCAS code L2L1	Website qmul.ac.uk/L2L1			
Duration ¹ 3 years	Year Abroad L2LY	Related courses Year in Industry - L1L9	A-level requirements² AAA including Mathematics	IB requirements 36 points, 666 at HL. This must include a minimum of 6 in SL Mathematics, if not being studied at HL. Excludes Maths Studies	ESL requirements 7.0 overall, 6.5 in W, 5.5 in R, L, S		
BSc (Econ)(Hons) Economics and International Relations with Integrated Foundation Year			UCAS code L2LF	Website qmul.ac.uk/L2LF			
Duration ¹ 4 years	Year Abroad L2LX	Related courses Year in Industry - L1L8	For full details of the entry requirements, please visit qmul.ac.uk/L2LF				
BSc (Econ)(Hons) Economics and International Relations with Integrated Foundation Year (January start)			UCAS code L2LJ	Website qmul.ac.uk/L2LJ			
Duration ¹ 4 years	Year Abroad L2LW	Related courses Year in Industry - L1L7	For full details of the entry requirements, please visit qmul.ac.uk/L2LJ				
BSc (Econ)(Hons) Economics and Politics			UCAS code LL12	Website qmul.ac.uk/LL12			
Duration ¹ 3 years	Year Abroad LL2Y	Related courses Year in Industry - LL19	A-level requirements² AAA including Mathematics. Excludes Use of Mathematics	IB requirements 36 points, 666 at HL, including 6 in SL Mathematics, if not being studied at HL. Excludes Maths Studies	ESL requirements 6.5 overall, 6.0 in W, 5.5 in R, L, S		
BSc (Econ)(Hons) Economics and Politics with Integrated Foundation Year			UCAS code LL2F	Website qmul.ac.uk/LL2F			
Duration ¹ 4 years	Year Abroad LL2X	Related courses Year in Industry - LL18	For full details of the entry requirements, please visit qmul.ac.uk/LL2F				
BSc (Econ)(Hons) Economics and Politics with Integrated Foundation Year (January start)			UCAS code LL2G	Website qmul.ac.uk/LL2G			
Duration ¹ 4 years	Year Abroad LL2Z	Related courses Year in Industry - LL17	For full details of the entry requirements, please visit qmul.ac.uk/LL2G				

BSc (Econ)(Hons) Economics, Finance and Management			UCAS code LN12	Website qmul.ac.uk/LN12			
Duration ¹ 3 years	Year Abroad LN2Y	Related courses Year in Industry - LN19			A-level requirements ² AAA including Mathematics. Excludes Use of Mathematics	IB requirements 36 points, 666 at HL, including 6 in SL Mathematics, if not being studied at HL. Excludes Maths Studies	ESL requirements 6.5 overall, 6.0 in W, 5.5 in R, L, S
BSc (Econ)(Hons) Economics, Finance and Management with Integrated Foundation Year			UCAS code LN2F	Website qmul.ac.uk/LN2F			
Duration ¹ 4 years	Year Abroad LN2X	Related courses Year in Industry - LN18			For full details of the entry requirements, please visit qmul.ac.uk/LN2F		
BSc (Econ)(Hons) Economics, Finance and Management with Integrated Foundation Year (January start)			UCAS code LN2G	Website qmul.ac.uk/LN2G			
Duration ¹ 4 years	Year Abroad LN2Z	Related courses Year in Industry - LN17			For full details of the entry requirements, please visit qmul.ac.uk/LN2G		
BSc (Econ)(Hons) Economics, Statistics and Mathematics			UCAS code LG11	Website qmul.ac.uk/LG11			
Duration ¹ 3 years	Year Abroad LG1Y	Related courses Year in Industry - LG19			A-level requirements ² AAA including Mathematics. Excludes Use of Mathematics	IB requirements 36 points, 666 at HL, including 6 in SL Mathematics, if not being studied at HL. Excludes Maths Studies	ESL requirements 6.5 overall, 6.0 in W, 5.5 in R, L, S
BSc (Econ)(Hons) Economics, Statistics and Mathematics with Integrated Foundation Year			UCAS code LG1F	Website qmul.ac.uk/LG1F			
Duration ¹ 4 years	Year Abroad LG1X	Related courses Year in Industry - LG18			For full details of the entry requirements, please visit qmul.ac.uk/LG1F		
BSc (Econ)(Hons) Economics, Statistics and Mathematics with Integrated Foundation Year (January start)			UCAS code LG1G	Website qmul.ac.uk/LG1G			
Duration ¹ 4 years	Year Abroad LG1Z	Related courses Year in Industry - LG17			For full details of the entry requirements, please visit qmul.ac.uk/LG1G		
BSc (Econ)(Hons) Finance			UCAS code L10D	Website qmul.ac.uk/L10D			
Duration ¹ 3 years	Year Abroad L10C	Related courses Year in Industry - L10B			A-level requirements ² AAA including Mathematics. Excludes Use of Mathematics	IB requirements 36 points, 666 at HL, including 6 in SL Mathematics, if not being studied at HL. Excludes Maths Studies	ESL requirements 6.5 overall, 6.0 in W, 5.5 in R, L, S
BSc (Econ)(Hons) Finance with Integrated Foundation Year			UCAS code L11F	Website qmul.ac.uk/L11F			
Duration ¹ 4 years	Year Abroad L11X	Related courses Year in Industry - L113			For full details of the entry requirements, please visit qmul.ac.uk/L11G		
BSc (Econ)(Hons) Finance with Integrated Foundation Year (January start)			UCAS code L11G	Website qmul.ac.uk/L11G			
Duration ¹ 4 years	Year Abroad L11Y	Related courses Year in Industry - L114			For full details of the entry requirements, please visit qmul.ac.uk/L11F		
Engineering and Materials Science							
BEng (Hons) Aerospace Engineering			UCAS code H421	Website qmul.ac.uk/H421			
Duration ¹ 3 years	Year Abroad H42Y	Related courses Foundation - HHX3; Year in Industry - H401			A-level requirements ² AAB including Mathematics, and Physics or Chemistry	IB requirements 34 points, 665 at HL including Mathematics, and either Physics or Chemistry	ESL requirements 6.0 overall, 5.5 in all components
MEng (Hons) Aerospace Engineering			UCAS code H400	Website qmul.ac.uk/H400			
Duration ¹ 4 years	Year Abroad H40Y	Related courses Year in Industry - HK00			A-level requirements ² AAA including Mathematics, and Physics or Chemistry	IB requirements 36 points, 665 at HL including Mathematics, and either Physics or Chemistry	ESL requirements 6.0 overall, 5.5 in all components
BEng (Hons) Biomedical Engineering			UCAS code HBF2	Website qmul.ac.uk/HBF2			
Duration ¹ 3 years	Year Abroad HBFY	Related courses Foundation - HHX3; Year in Industry - HBF1			A-level requirements ² AAB including Mathematics, and Physics or Chemistry	IB requirements 34 points, 665 at HL including Mathematics, and either Physics or Chemistry	ESL requirements 6.0 overall, 5.5 in all components
MEng (Hons) Biomedical Engineering			UCAS code HBF5	Website qmul.ac.uk/HBF5			
Duration ¹ 4 years	Year Abroad HBFX	Related courses Year in Industry - HBF3			A-level requirements ² AAA including Mathematics, and Physics or Chemistry	IB requirements 36 points, 665 at HL including Mathematics, and either Physics or Chemistry	ESL requirements 6.0 overall, 5.5 in all components

BEng (Hons) Chemical Engineering			UCAS code H812	Website qmul.ac.uk/H812		
Duration¹ 3 years	Year Abroad H81Y	Related courses Foundation - HHX3; Year in Industry - H811		A-level requirements² AAB including Mathematics, and Physics or Chemistry	IB requirements 34 points, 665 at HL including Mathematics, and either Physics or Chemistry	ESL requirements 6.0 overall, 5.5 in all components
MEng (Hons) Chemical Engineering			UCAS code H814	Website qmul.ac.uk/H814		
Duration¹ 4 years	Year Abroad H84Y	Related courses Year in Industry - H813		A-level requirements² AAA including Mathematics, and Physics or Chemistry	IB requirements 36 points, 665 at HL including Mathematics, and either Physics or Chemistry	ESL requirements 6.0 overall, 5.5 in all components
BEng (Hons) Design, Innovation and Creative Engineering			UCAS code 4A33	Website qmul.ac.uk/4A33		
Duration¹ 3 years	Year Abroad 4A3Y	Related courses -		A-level requirements² AAB including Maths or Physics. If you do not have an additional creative subject you should be able to demonstrate creativity by another method, for example as a GCSE or an activity outside school	IB requirements 34 points, 665 at HL including Mathematics or Physics. If students do not have an IB creative subject at standard or higher level they should be able to demonstrate creativity in their personal statement by another method, for example through an activity outside school	ESL requirements 6.0 overall, 5.5 in all components
MEng (Hons) Design, Innovation and Creative Engineering			UCAS code 4L71	Website qmul.ac.uk/4L71		
Duration¹ 3 years	Year Abroad 4L7Y	Related courses -		A-level requirements² AAA including Maths or Physics. If you do not have an additional creative subject you should be able to demonstrate creativity by another method, for example as a GCSE or an activity outside school	IB requirements 36 points, 665 at HL including Mathematics or Physics. If students do not have an IB creative subject at standard or higher level they should be able to demonstrate creativity in their personal statement by another method, for example through an activity outside school	ESL requirements 6.0 overall, 5.5 in all components
BEng (Hons) Materials Science and Engineering			UCAS code J511	Website qmul.ac.uk/J511		
Duration¹ 3 years	Year Abroad J51Y	Related courses Foundation - JJX3; Year in Industry - JM11		A-level requirements² ABB including at least two subjects from Mathematics, Physics or Chemistry	IB requirements 32 points, 655 at HL including at least two subjects of Mathematics, Physics or Chemistry	ESL requirements 6.0 overall, 5.5 in all components
MEng (Hons) Materials Science and Engineering			UCAS code J512	Website qmul.ac.uk/J512		
Duration¹ 4 years	Year Abroad J52Y	Related courses Year in Industry - JM10		A-level requirements² AAA including at least two subjects from Mathematics, Physics or Chemistry	IB requirements 36 points, 665 at HL including at least two subjects of Mathematics, Physics or Chemistry	ESL requirements 6.0 overall, 5.5 in all components
BEng (Hons) Mechanical Engineering			UCAS code H300	Website qmul.ac.uk/H300		
Duration¹ 3 years	Year Abroad H30Y	Related courses Foundation - HHX3; Year in Industry - H304		A-level requirements² AAB including Mathematics, and Physics or Chemistry	IB requirements 34 points, 665 at HL including Mathematics, and either Physics or Chemistry	ESL requirements 6.0 overall, 5.5 in all components
MEng (Hons) Mechanical Engineering			UCAS code H301	Website qmul.ac.uk/H301		
Duration¹ 4 years	Year Abroad H31Y	Related courses Year in Industry - H302		A-level requirements² AAA including Mathematics, and Physics or Chemistry	IB requirements 36 points, 665 at HL including Mathematics, and either Physics or Chemistry	ESL requirements 6.0 overall, 5.5 in all components
BEng (Hons) Robotics Engineering			UCAS code H67A	Website qmul.ac.uk/H67A		
Duration¹ 3 years	Year Abroad H67Y	Related courses Foundation - HHX3; Year in Industry - H673		A-level requirements² AAB including Mathematics and a second science subject, preferably Physics, Electronics, Chemistry or Computing	IB requirements 34 points, 665 at HL including Mathematics, and either Physics or Chemistry	ESL requirements 6.0 overall, 5.5 in all components
MEng (Hons) Robotics Engineering			UCAS code H67B	Website qmul.ac.uk/H67B		
Duration¹ 4 years	Year Abroad H67X	Related courses Year in Industry - H67C		A-level requirements² AAA including Mathematics and a second science subject, preferably Physics, Electronics, Chemistry or Computing	IB requirements 36 points, 665 at HL including Mathematics, and either Physics or Chemistry	ESL requirements 6.0 overall, 5.5 in all components

BEng (Hons) Sustainable Energy Engineering			UCAS code H221	Website qmul.ac.uk/H221			
Duration ¹ 3 years	Year Abroad H22Y	Related courses Foundation - HHX3; Year in Industry - HF21			A-level requirements ² AAB including Mathematics, and Physics or Chemistry	IB requirements 34 points, 665 at HL including Mathematics, and either Physics or Chemistry	ESL requirements 6.0 overall, 5.5 in all components
MEng (Hons) Sustainable Energy Engineering			UCAS code H224	Website qmul.ac.uk/H224			
Duration ¹ 4 years	Year Abroad H24Y	Related courses Year in Industry - HG21			A-level requirements ² AAA including Mathematics, and Physics or Chemistry	IB requirements 36 points, 665 at HL including Mathematics, and either Physics or Chemistry	ESL requirements 6.0 overall, 5.5 in all components
English							
BA (Hons) English			UCAS code Q300	Website qmul.ac.uk/Q300			
Duration ¹ 3 years	Year Abroad Q301	Related courses -			A-level requirements ² ABB, including A or above in English Literature, English Language and Literature or English Language	IB requirements 32 points, 655 at HL including a minimum of 6 in HL English A	ESL requirements 7.0 overall, 6.5 in W, 5.5 in R, L, S
BA (Hons) English and Drama			UCAS code QW34	Website qmul.ac.uk/QW34			
Duration ¹ 3 years	Year Abroad QW4Y	Related courses -			A-level requirements ² ABB, including A or above in English Literature, English Language and Literature or English Language	IB requirements 32 points, 655 at HL including a minimum of 6 in HL English A	ESL requirements 7.0 overall, 6.5 in W, 5.5 in R, L, S
BA (Hons) English and Film Studies			UCAS code QW36	Website qmul.ac.uk/QW36			
Duration ¹ 3 years	Year Abroad QW6Y	Related courses -			A-level requirements ² ABB, including A or above in English Literature, English Language and Literature or English Language	IB requirements 32 points, 655 at HL including a minimum of 6 in HL English A	ESL requirements 7.0 overall, 6.5 in W, 5.5 in R, L, S
BA (Hons) English and History			UCAS code QV31	Website qmul.ac.uk/QV31			
Duration ¹ 3 years	Year Abroad QV3Y	Related courses -			A-level requirements ² ABB, including A or above in English Literature, English Language and Literature or English Language	IB requirements 32 points, 655 at HL including a minimum of 6 in HL English A	ESL requirements 7.0 overall, 6.5 in W, 5.5 in R, L, S
BA (Hons) English Literature and Linguistics			UCAS code QQ13	Website qmul.ac.uk/QQ13			
Duration ¹ 3 years	Year Abroad QQ1Y	Related courses -			A-level requirements ² ABB, including A or above in English Literature, English Language and Literature or English Language	IB requirements 32 points, 655 at HL including a minimum of 6 in HL English A	ESL requirements 7.0 overall, 6.5 in W, 5.5 in R, L, S
BA (Hons) English with Creative Writing			UCAS code QW11	Website qmul.ac.uk/QW11			
Duration ¹ 3 years	Year Abroad QW1Y	Related courses -			A-level requirements ² ABB, including A or above in English Literature, English Language and Literature or English Language	IB requirements 32 points, 655 at HL including a minimum of 6 in HL English A	ESL requirements 7.0 overall, 6.5 in W, 5.5 in R, L, S
Environmental Science							
BSc (Hons) Environmental Science			UCAS code F850	Website qmul.ac.uk/F850			
Duration ¹ 3 years	Year Abroad F851	Related courses -			A-level requirements ² ABB. This must include at least one of the following subjects: Biology, Chemistry, Physics, Mathematics, Geography, Geology, Psychology, Environmental Studies or Environmental Science. Excludes General Studies	IB requirements 32 points, 655 at HL to include at least one of the following subjects: Biology, Chemistry, Physics, Mathematics, Geography, Geology, Psychology, Environmental Studies or Environmental Science at Higher Level	ESL requirements 6.5 overall, 6.0 in W, 5.5 in R, L, S

BSc (Hons) Environmental Science with Business ManagementUCAS code F8N2 | Website qmul.ac.uk/F8N2

Duration¹ 3 years	Year Abroad F8NY	Related courses -	A-level requirements² ABB. This must include at least one of the following subjects: Biology, Chemistry, Physics, Mathematics, Geography, Geology, Psychology, Environmental Studies or Environmental Science. Excludes General Studies	IB requirements 32 points, 655 at HL to include at least one of the following subjects: Biology, Chemistry, Physics, Mathematics, Geography, Geology, Psychology, Environmental Studies or Environmental Science at Higher Level	ESL requirements 6.5 overall, 6.0 in W, 5.5 in R, L, S
--	----------------------------	-----------------------------	--	--	--

Film studies**BA (Hons) Comparative Literature and Film Studies** | UCAS code QP23 | Website qmul.ac.uk/QP23

Duration¹ 3 years	Year Abroad QP2Y	Related courses -	A-level requirements² ABB, including at least one essay-based subject in humanities or social sciences	IB requirements 32 points, 655 at HL including an essay-based humanities or social sciences subject	ESL requirements 7.0 overall, 7.0 in W, 5.5 in R, L, S
--	----------------------------	-----------------------------	---	---	--

BA (Hons) English and Film Studies | UCAS code QW36 | Website qmul.ac.uk/QW36

Duration¹ 3 years	Year Abroad QW6Y	Related courses -	A-level requirements² ABB, including A or above in English Literature, English Language and Literature or English Language	IB requirements 32 points, 655 at HL including a minimum of 6 in HL English A	ESL requirements 7.0 overall, 6.5 in W, 5.5 in R, L, S
--	----------------------------	-----------------------------	---	---	--

BA (Hons) Film Studies | UCAS code P303 | Website qmul.ac.uk/P303

Duration¹ 3 years	Year Abroad P30Y	Related courses -	A-level requirements² ABB, including at least one essay-based subject in humanities or social sciences	IB requirements 32 points, 655 at HL including an essay-based humanities or social sciences subject	ESL requirements 7.0 overall, 7.0 in W, 5.5 in R, L, S
--	----------------------------	-----------------------------	---	---	--

BA (Hons) Film Studies and Drama | UCAS code WW46 | Website qmul.ac.uk/WW46

Duration¹ 3 years	Year Abroad WW4Y	Related courses -	A-level requirements² ABB, including at least one essay-based subject in humanities or social sciences	IB requirements 32 points, 655 at HL including a minimum of 6 in at least one arts, humanities or social sciences subject at HL and an essay-based humanities or social sciences subject at HL	ESL requirements 7.0 overall, 6.5 in W, 5.5 in R, L, S
--	----------------------------	-----------------------------	---	--	--

BA (Hons) Film Studies and French | UCAS code RW16 | Website qmul.ac.uk/RW16

Duration 4 years	Year Abroad Yes	Related courses -	A-level requirements² BBB, including at least one essay-based subject in humanities or social sciences	IB requirements 30 points, 555 at HL including an essay-based humanities or social sciences subject	ESL requirements 7.0 overall, 7.0 in W, 5.5 in R, L, S
----------------------------	---------------------------	-----------------------------	---	---	--

BA (Hons) Film Studies and German | UCAS code RW26 | Website qmul.ac.uk/RW26

Duration 4 years	Year Abroad Yes	Related courses -	A-level requirements² BBB, including at least one essay-based subject in humanities or social sciences	IB requirements 30 points, 555 at HL including an essay-based humanities or social sciences subject	ESL requirements 7.0 overall, 7.0 in W, 5.5 in R, L, S
----------------------------	---------------------------	-----------------------------	---	---	--

BA (Hons) Film Studies and Hispanic Studies | UCAS code RW46 | Website qmul.ac.uk/RW46

Duration 4 years	Year Abroad Yes	Related courses -	A-level requirements² BBB, including at least one essay-based subject in humanities or social sciences	IB requirements 30 points, 555 at HL including an essay-based humanities or social sciences subject	ESL requirements 7.0 overall, 7.0 in W, 5.5 in R, L, S
----------------------------	---------------------------	-----------------------------	---	---	--

BA (Hons) Film Studies and Russian | UCAS code RW77 | Website qmul.ac.uk/RW77

Duration 4 years	Year Abroad Yes	Related courses -	A-level requirements² BBB, including at least one essay-based subject in humanities or social sciences	IB requirements 30 points, 555 at HL including an essay-based humanities or social sciences subject	ESL requirements 7.0 overall, 7.0 in W, 5.5 in R, L, S
----------------------------	---------------------------	-----------------------------	---	---	--

BA (Hons) Liberal Arts			UCAS code V901	Website qmul.ac.uk/V901			
Duration ¹ 3 years	Year Abroad V902	Related courses Year in Industry - V903			A-level requirements ² BBB, including at least one essay-based subject in humanities or social sciences	IB requirements 30 points, 555 at HL including an essay-based humanities or social sciences subject	ESL requirements 7.0 overall, 7.0 in W, 5.5 in R, L, S
Geography							
BA (Hons) Geography			UCAS code L700	Website qmul.ac.uk/L700			
Duration ¹ 3 years	Year Abroad L701	Related courses -			A-level requirements ² ABB. Excludes General Studies	IB requirements 32 points, 655 at HL	ESL requirements 7.0 overall, 6.5 in W, 5.5 in R, L, S
BSc (Hons) Geography			UCAS code F800	Website qmul.ac.uk/F800			
Duration ¹ 3 years	Year Abroad F801	Related courses -			A-level requirements ² ABB. Excludes General Studies	IB requirements 32 points, 655 at HL	ESL requirements 7.0 overall, 6.5 in W, 5.5 in R, L, S
BSc (Hons) Geography with Business Management			UCAS code FVN1	Website qmul.ac.uk/FVN1			
Duration ¹ 3 years	Year Abroad FVNY	Related courses -			A-level requirements ² ABB. Excludes General Studies	IB requirements 32 points, 655 at HL	ESL requirements 7.0 overall, 6.5 in W, 5.5 in R, L, S
BA (Hons) Global Development			UCAS code L750	Website qmul.ac.uk/L750			
Duration ¹ 3 years	Year Abroad L75A	Related courses -			A-level requirements ² ABB. Excludes General Studies	IB requirements 32 points, 655 at HL	ESL requirements 7.0 overall, 6.5 in W, 5.5 in R, L, S
BSc (Hons) Human Geography			UCAS code L720	Website qmul.ac.uk/L720			
Duration ¹ 3 years	Year Abroad L72Y	Related courses -			A-level requirements ² ABB. Excludes General Studies	IB requirements 32 points, 655 at HL	ESL requirements 7.0 overall, 6.5 in W, 5.5 in R, L, S
History							
BA (Hons) Cultural History			UCAS code V142	Website qmul.ac.uk/V142			
Duration ¹ 3 years	Year Abroad V143	Related courses -			A-level requirements ² ABB	IB requirements 32 points, 655 at HL	ESL requirements 7.0 overall, 6.5 in W, 5.5 in R, L, S
BA (Hons) History			UCAS code V101	Website qmul.ac.uk/V101			
Duration ¹ 3 years	Year Abroad V111	Related courses -			A-level requirements ² ABB	IB requirements 32 points, 655 at HL	ESL requirements 7.0 overall, 6.5 in W, 5.5 in R, L, S
BA (Hons) History and International Relations			UCAS code VL01	Website qmul.ac.uk/VL01			
Duration ¹ 3 years	Year Abroad VL02	Related courses -			A-level requirements ² ABB	IB requirements 32 points, 655 at HL	ESL requirements 7.0 overall, 6.5 in W, 5.5 in R, L, S
BA (Hons) History and Politics			UCAS code LV21	Website qmul.ac.uk/LV21			
Duration ¹ 3 years	Year Abroad LV20	Related courses -			A-level requirements ² ABB	IB requirements 32 points, 655 at HL	ESL requirements 7.0 overall, 6.5 in W, 5.5 in R, L, S
BA (Hons) Modern and Contemporary History			UCAS code V140	Website qmul.ac.uk/V140			
Duration ¹ 3 years	Year Abroad V141	Related courses -			A-level requirements ² ABB	IB requirements 32 points, 655 at HL	ESL requirements 7.0 overall, 6.5 in W, 5.5 in R, L, S
Law							
LLB (Hons) English and European Law			UCAS code M120	Website qmul.ac.uk/M120			
Duration ¹ 4 years	Year Abroad Yes	Related courses -			A-level requirements ² A*AA	IB requirements 36 points overall, 666 at HL	ESL requirements 7.0 overall, 6.5 in W, 5.5 in R, L, S
LLB (Hons) English and French Law			UCAS code M106	Website qmul.ac.uk/M106			
Duration ¹ 4 years	Year Abroad Yes	Related courses -			A-level requirements ² A*AA, including French (or Diplôme d'Etudes en Langue Française (DELF), the French Studies Diploma, at B2 Level). Eligible applicants will be interviewed	IB requirements 36 points overall, 666 at HL including French (or DELF at B2 Level)	ESL requirements 7.0 overall, 6.5 in W, 5.5 in R, L, S

LLB (Hons) Global Law			UCAS code M105	Website qmul.ac.uk/M105			
Duration¹ 4 years	Year Abroad Yes	Related courses -			A-level requirements² A*AA	IB requirements 36 points overall, 666 at HL	ESL requirements 7.0 overall, 6.5 in W, 5.5 in R, L, S
LLB (Hons) Law			UCAS code M100	Website qmul.ac.uk/M105			
Duration¹ 3 years	Year Abroad -	Related courses -			A-level requirements² A*AA	IB requirements 36 points overall, 666 at HL	ESL requirements 7.0 overall, 6.5 in W, 5.5 in R, L, S
LLB (Hons) Law and Climate Justice			UCAS code M1L1	Website qmul.ac.uk/M1L1			
Duration¹ 3 years	Year Abroad -	Related courses -			A-level requirements² A*AA	IB requirements 36 points overall, 666 at HL	ESL requirements 7.0 overall, 6.5 in W, 5.5 in R, L, S
LLB (Hons) Law and Politics			UCAS code ML13	Website qmul.ac.uk/ML13			
Duration¹ 3 years	Year Abroad -	Related courses -			A-level requirements² A*AA	IB requirements 36 points overall, 666 at HL	ESL requirements 7.0 overall, 6.5 in W, 5.5 in R, L, S
LLB (Hons) Senior Status			UCAS code M101	Website qmul.ac.uk/M101			
Duration¹ 2 years	Year Abroad -	Related courses -			A-level requirements² 2:1 honours degree or equivalent	IB requirements -	ESL requirements 7.0 overall, 6.5 in W, 5.5 in R, L, S
LLB (Hons) Law with Business			UCAS code M1N1	Website qmul.ac.uk/M1N1			
Duration¹ 3 years	Year Abroad -	Related courses -			A-level requirements² A*AA	IB requirements 36 points overall, 666 at HL	ESL requirements 7.0 overall, 6.5 in W, 5.5 in R, L, S
Linguistics							
BA (Hons) Comparative Literature and Linguistics			UCAS code QQ21	Website qmul.ac.uk/QQ21			
Duration¹ 3 years	Year Abroad QQ2Y	Related courses -			A-level requirements² ABB, including at least one essay-based subject in humanities or social sciences	IB requirements 32 points, 655 at HL including an essay-based humanities or social sciences subject	ESL requirements 7.0 overall, 7.0 in W, 5.5 in R, L, S
BA (Hons) English Language			UCAS code Q310	Website qmul.ac.uk/Q310			
Duration¹ 3 years	Year Abroad Q311	Related courses -			A-level requirements² ABB	IB requirements 32 points, 655 at HL	ESL requirements 7.0 overall, 7.0 in W, 5.5 in R, L, S
BA (Hons) English Language and Linguistics			UCAS code QQH1	Website qmul.ac.uk/QQH1			
Duration¹ 3 years	Year Abroad QQHY	Related courses -			A-level requirements² ABB	IB requirements 32 points, 655 at HL	ESL requirements 7.0 overall, 7.0 in W, 5.5 in R, L, S
BA (Hons) English Literature and Linguistics			UCAS code QQ13	Website qmul.ac.uk/QQ13			
Duration¹ 3 years	Year Abroad QQ1Y	Related courses -			A-level requirements² ABB, including A or above in English Literature, English Language and Literature or English Language	IB requirements 32 points, 655 at HL including a minimum of 6 in HL English A	ESL requirements 7.0 overall, 6.5 in W, 5.5 in R, L, S
BA (Hons) French and Linguistics			UCAS code RQ11	Website qmul.ac.uk/RQ11			
Duration 4 years	Year Abroad Yes	Related courses -			A-level requirements² BBB, including at least one essay-based subject in humanities or social sciences	IB requirements 30 points, 555 at HL including an essay-based humanities or social sciences subject	ESL requirements 7.0 overall, 7.0 in W, 5.5 in R, L, S
BA (Hons) German and Linguistics			UCAS code RQ21	Website qmul.ac.uk/RQ21			
Duration 4 years	Year Abroad Yes	Related courses -			A-level requirements² BBB, including at least one essay-based subject in humanities or social sciences	IB requirements 30 points, 555 at HL including an essay-based humanities or social sciences subject	ESL requirements 7.0 overall, 7.0 in W, 5.5 in R, L, S
BA (Hons) Hispanic Studies and Linguistics			UCAS code RQ41	Website qmul.ac.uk/RQ41			
Duration 4 years	Year Abroad Yes	Related courses -			A-level requirements² BBB, including at least one essay-based subject in humanities or social sciences	IB requirements 30 points, 555 at HL including an essay-based humanities or social sciences subject	ESL requirements 7.0 overall, 7.0 in W, 5.5 in R, L, S

BA (Hons) Russian and Linguistics			UCAS code QR71	Website qmul.ac.uk/QR71		
Duration 4 years	Year Abroad Yes	Related courses -			A-level requirements² BBB, including at least one essay-based subject in humanities or social sciences	IB requirements 30 points, 555 at HL including an essay-based humanities or social sciences subject
						ESL requirements 7.0 overall, 7.0 in W, 5.5 in R, L, S
BA (Hons) Liberal Arts			UCAS code V901	Website qmul.ac.uk/V901		
Duration ¹ 3 years	Year Abroad V902	Related courses Year in Industry - V903			A-level requirements² BBB, including at least one essay-based subject in humanities or social sciences	IB requirements 30 points, 555 at HL including an essay-based humanities or social sciences subject
						ESL requirements 7.0 overall, 7.0 in W, 5.5 in R, L, S
BA (Hons) Linguistics			UCAS code Q100	Website qmul.ac.uk/Q100		
Duration ¹ 3 years	Year Abroad Q101	Related courses -			A-level requirements² ABB	IB requirements 32 points, 655 at HL
						ESL requirements 7.0 overall, 7.0 in W, 5.5 in R, L, S
Mathematical Sciences						
BSc (Hons) Actuarial Science			UCAS code N323	Website qmul.ac.uk/N323		
Duration ¹ 3 years	Year Abroad N32Y	Related courses Foundation - GGX2; Professional Placement - N32P			A-level requirements² AAA including A in Mathematics	IB requirements 36 points, 666 at HL including Mathematics
						ESL requirements 6.0 overall, 5.5 in all components
BSc (Econ)(Hons) Economics, Statistics and Mathematics			UCAS code LG11	Website qmul.ac.uk/LG11		
Duration ¹ 3 years	Year Abroad LG1Y	Related courses Year in Industry - LG19			A-level requirements² AAA including Mathematics. Excludes Use of Mathematics	IB requirements 36 points, 666 at HL, including 6 in SL Mathematics, if not being studied at HL. Excludes Maths Studies
						ESL requirements 6.5 overall, 6.0 in W, 5.5 in R, L, S
BSc (Econ)(Hons) Economics, Statistics and Mathematics with Integrated Foundation Year			UCAS code LG1F	Website qmul.ac.uk/LG1F		
Duration ¹ 4 years	Year Abroad LG1X	Related courses Year in Industry - LG18				For full details of the entry requirements, please visit qmul.ac.uk/LG1F
BSc (Econ)(Hons) Economics, Statistics and Mathematics with Integrated Foundation Year (January start)			UCAS code LG1G	Website qmul.ac.uk/LG1G		
Duration ¹ 4 years	Year Abroad LG1Z	Related courses Year in Industry - LG17				For full details of the entry requirements, please visit qmul.ac.uk/LG1G
MSci (Hons) Financial Mathematics			UCAS code GN1H	Website qmul.ac.uk/GN1H		
Duration ¹ 4 years	Year Abroad GNHY	Related courses Professional Placement - GN2H			A-level requirements² AAA, including Mathematics	IB requirements 36 points, 666 at HL including Mathematics
						ESL requirements 6.0 overall, 5.5 in all components
BSc (Hons) Mathematics			UCAS code G100	Website qmul.ac.uk/G100		
Duration ¹ 3 years	Year Abroad G10Y	Related courses Foundation - GGX2; Professional Placement - G101			A-level requirements² ABB, including A or above in Mathematics	IB requirements 32 points, 655 at HL including Mathematics
						ESL requirements 6.0 overall, 5.5 in all components
MSci (Hons) Mathematics			UCAS code G102	Website qmul.ac.uk/G102		
Duration ¹ 4 years	Year Abroad G12Y	Related courses -			A-level requirements² AAA, including Mathematics	IB requirements 36 points, 655 at HL including Mathematics
						ESL requirements 6.0 overall, 5.5 in all components
BSc (Hons) Mathematics and Statistics			UCAS code GG31	Website qmul.ac.uk/GG31		
Duration ¹ 3 years	Year Abroad GG3Y	Related courses Foundation - GGX2; Professional Placement - GG32			A-level requirements² ABB, including A or above in Mathematics	IB requirements 32 points, 655 at HL including Mathematics
						ESL requirements 6.0 overall, 5.5 in all components
BSc (Hons) Mathematics with Finance and Accounting			UCAS code G1N4	Website qmul.ac.uk/G1N4		
Duration ¹ 3 years	Year Abroad G14Y	Related courses Foundation - GGX2; Professional Placement - G1N6			A-level requirements² ABB, including A or above in Mathematics	IB requirements 32 points, 655 at HL including Mathematics
						ESL requirements 6.0 overall, 5.5 in all components
BSc (Hons) Mathematics with Management			UCAS code G12N	Website qmul.ac.uk/G12N		
Duration ¹ 3 years	Year Abroad G13N	Related courses Professional Placement - G1NN			A-level requirements² AAB, including A or above in Mathematics	IB requirements 34 points, 665 at HL including Mathematics
						ESL requirements 6.0 overall, 5.5 in all components

Medicine						
MBBS Medicine - Graduate Entry Programme (4 year)		UCAS code A101	Website qmul.ac.uk/A101	For full details of the entry requirements, please visit qmul.ac.uk/A101		
Duration ¹ 4 years	Year Abroad -	Related courses -				
MBBS Medicine (5 Year Programme)		UCAS code A100	Website qmul.ac.uk/A100			
Duration ¹ 5 years	Year Abroad -	Related courses -	A-level requirements² A*AA including Biology or Chemistry, and a second science from Biology, Chemistry, Physics or Mathematics. Results must be achieved in one sitting over a period of no longer than two years	IB requirements 38 points, 666 at HL including Biology or Chemistry, and a second science or Mathematics	ESL requirements 7.0 overall, 6.5 in W, 5.5 in R, L, S	
MMBS Medicine (Malta, 5 Year Programme)		UCAS code A110	Website qmul.ac.uk/A110	For full details of the entry requirements, please visit qmul.ac.uk/A110		
Duration ¹ 5 years	Year Abroad -	Related courses -				
Modern Languages and Cultures						
BA (Hons) Film Studies and French		UCAS code RW16	Website qmul.ac.uk/RW16			
Duration 4 years	Year Abroad Yes	Related courses -	A-level requirements² BBB, including at least one essay-based subject in humanities or social sciences	IB requirements 30 points, 555 at HL including an essay-based humanities or social sciences subject	ESL requirements 7.0 overall, 7.0 in W, 5.5 in R, L, S	
BA (Hons) Film Studies and German		UCAS code RW26	Website qmul.ac.uk/RW26			
Duration 4 years	Year Abroad Yes	Related courses -	A-level requirements² BBB, including at least one essay-based subject in humanities or social sciences	IB requirements 30 points, 555 at HL including an essay-based humanities or social sciences subject	ESL requirements 7.0 overall, 7.0 in W, 5.5 in R, L, S	
BA (Hons) Film Studies and Hispanic Studies		UCAS code RW46	Website qmul.ac.uk/RW46			
Duration 4 years	Year Abroad Yes	Related courses -	A-level requirements² BBB, including at least one essay-based subject in humanities or social sciences	IB requirements 30 points, 555 at HL including an essay-based humanities or social sciences subject	ESL requirements 7.0 overall, 7.0 in W, 5.5 in R, L, S	
BA (Hons) Film Studies and Russian		UCAS code RW77	Website qmul.ac.uk/RW77			
Duration 4 years	Year Abroad Yes	Related courses -	A-level requirements² BBB, including at least one essay-based subject in humanities or social sciences	IB requirements 30 points, 555 at HL including an essay-based humanities or social sciences subject	ESL requirements 7.0 overall, 7.0 in W, 5.5 in R, L, S	
BA (Hons) French and Comparative Literature		UCAS code RQ12	Website qmul.ac.uk/RQ12			
Duration 4 years	Year Abroad Yes	Related courses -	A-level requirements² BBB, including at least one essay-based subject in humanities or social sciences	IB requirements 30 points, 555 at HL including an essay-based humanities or social sciences subject	ESL requirements 7.0 overall, 7.0 in W, 5.5 in R, L, S	
BA (Hons) French and Linguistics		UCAS code RQ11	Website qmul.ac.uk/RQ11			
Duration 4 years	Year Abroad Yes	Related courses -	A-level requirements² BBB, including at least one essay-based subject in humanities or social sciences	IB requirements 30 points, 555 at HL including an essay-based humanities or social sciences subject	ESL requirements 7.0 overall, 7.0 in W, 5.5 in R, L, S	
BA (Hons) French and Politics		UCAS code LR21	Website qmul.ac.uk/LR21			
Duration 4 years	Year Abroad Yes	Related courses -	A-level requirements² ABB, including at least one essay-based subject in humanities or social sciences	IB requirements 32 points, 655 at HL including an essay-based humanities or social sciences subject	ESL requirements 7.0 overall, 7.0 in W, 5.5 in R, L, S	
BA (Hons) French with Business Management		UCAS code R1N1	Website qmul.ac.uk/R1N1			
Duration 4 years	Year Abroad Yes	Related courses -	A-level requirements² ABB including at least one essay-based subject in humanities or social sciences	IB requirements 32 points, 655 at HL including an essay-based humanities or social sciences subject	ESL requirements 7.0 overall, 7.0 in W, 5.5 in R, L, S	

BA (Hons) German and Comparative Literature			UCAS code QR22	Website qmul.ac.uk/QR22			
Duration 4 years	Year Abroad Yes	Related courses -			A-level requirements² BBB, including at least one essay-based subject in humanities or social sciences	IB requirements 30 points, 555 at HL including an essay-based humanities or social sciences subject	ESL requirements 7.0 overall, 7.0 in W, 5.5 in R, L, S
BA (Hons) German and Linguistics			UCAS code RQ21	Website qmul.ac.uk/RQ21			
Duration 4 years	Year Abroad Yes	Related courses -			A-level requirements² BBB, including at least one essay-based subject in humanities or social sciences	IB requirements 30 points, 555 at HL including an essay-based humanities or social sciences subject	ESL requirements 7.0 overall, 7.0 in W, 5.5 in R, L, S
BA (Hons) German and Politics			UCAS code LR22	Website qmul.ac.uk/LR22			
Duration 4 years	Year Abroad Yes	Related courses -			A-level requirements² ABB, including at least one essay-based subject in humanities or social sciences	IB requirements 32 points, 655 at HL including an essay-based humanities or social sciences subject	ESL requirements 7.0 overall, 7.0 in W, 5.5 in R, L, S
BA (Hons) German with Business Management			UCAS code R2N1	Website qmul.ac.uk/R2N1			
Duration 4 years	Year Abroad Yes	Related courses -			A-level requirements² ABB, including at least one essay-based subject in humanities or social sciences	IB requirements 32 points, 655 at HL including an essay-based humanities or social sciences subject	ESL requirements 7.0 overall, 7.0 in W, 5.5 in R, L, S
BA (Hons) Hispanic Studies and Comparative Literature			UCAS code QR24	Website qmul.ac.uk/QR24			
Duration 4 years	Year Abroad Yes	Related courses -			A-level requirements² BBB, including at least one essay-based subject in humanities or social sciences	IB requirements 30 points, 555 at HL including an essay-based humanities or social sciences subject	ESL requirements 7.0 overall, 7.0 in W, 5.5 in R, L, S
BA (Hons) Hispanic Studies and Linguistics			UCAS code RQ41	Website qmul.ac.uk/RQ41			
Duration 4 years	Year Abroad Yes	Related courses -			A-level requirements² BBB, including at least one essay-based subject in humanities or social sciences	IB requirements 30 points, 555 at HL including an essay-based humanities or social sciences subject	ESL requirements 7.0 overall, 7.0 in W, 5.5 in R, L, S
BA (Hons) Hispanic Studies and Politics			UCAS code LR24	Website qmul.ac.uk/LR24			
Duration 4 years	Year Abroad Yes	Related courses -			A-level requirements² ABB, including at least one essay-based subject in humanities or social sciences	IB requirements 32 points, 655 at HL including an essay-based humanities or social sciences subject	ESL requirements 7.0 overall, 7.0 in W, 5.5 in R, L, S
BA (Hons) Hispanic Studies with Business Management			UCAS code R4N1	Website qmul.ac.uk/R4N1			
Duration 4 years	Year Abroad Yes	Related courses -			A-level requirements² ABB, including at least one essay-based subject in humanities or social sciences	IB requirements 32 points, 655 at HL including an essay-based humanities or social sciences subject	ESL requirements 7.0 overall, 7.0 in W, 5.5 in R, L, S
BA (Hons) Liberal Arts			UCAS code V901	Website qmul.ac.uk/V901			
Duration 3 years	Year Abroad V902	Related courses Year in Industry - V903			A-level requirements² BBB, including at least one essay-based subject in humanities or social sciences	IB requirements 30 points, 555 at HL including an essay-based humanities or social sciences subject	ESL requirements 7.0 overall, 7.0 in W, 5.5 in R, L, S
BA (Hons) Modern Languages			UCAS code R900	Website qmul.ac.uk/R900			
Duration 4 years	Year Abroad Yes	Related courses -			A-level requirements² BBB including at least one essay-based subject. All other subjects offered as major languages may be studied from beginners' level, in either single or dual language combinations. In any dual language combination, applicants may not study more than one language from beginners' level	IB requirements 30 points, 555 at HL including an essay-based humanities or social sciences subject	ESL requirements 7.0 overall, 7.0 in W, 5.5 in R, L, S

BA (Hons) Russian and Comparative Literature			UCAS code QR72	Website qmul.ac.uk/QR72		
Duration	Year Abroad	Related courses			A-level requirements² BBB, including at least one essay-based subject in humanities or social sciences	IB requirements 30 points, 555 at HL including an essay-based humanities or social sciences subject
4 years	Yes	-				ESL requirements 7.0 overall, 7.0 in W, 5.5 in R, L, S
BA (Hons) Russian and Linguistics			UCAS code QR71	Website qmul.ac.uk/QR71		
Duration	Year Abroad	Related courses			A-level requirements² BBB, including at least one essay-based subject in humanities or social sciences	IB requirements 30 points, 555 at HL including an essay-based humanities or social sciences subject
4 years	Yes	-				ESL requirements 7.0 overall, 7.0 in W, 5.5 in R, L, S
BA (Hons) Russian and Politics			UCAS code RL72	Website qmul.ac.uk/RL72		
Duration	Year Abroad	Related courses			A-level requirements² ABB, including at least one essay-based subject in humanities or social sciences	IB requirements 32 points, 655 at HL including an essay-based humanities or social sciences subject
4 years	Yes	-				ESL requirements 7.0 overall, 7.0 in W, 5.5 in R, L, S
BA (Hons) Russian with Business Management			UCAS code R1N7	Website qmul.ac.uk/R1N7		
Duration	Year Abroad	Related courses			A-level requirements² ABB, including at least one essay-based subject in humanities or social sciences	IB requirements 32 points, 655 at HL including an essay-based humanities or social sciences subject
4 years	Yes	-				ESL requirements 7.0 overall, 7.0 in W, 5.5 in R, L, S
Physics and Astronomy						
BSc (Hons) Astrophysics			UCAS code F526	Website qmul.ac.uk/F526		
Duration ¹	Year Abroad	Related courses			A-level requirements² ABB including A or above in Mathematics and/or Physics. Both subjects are required	IB requirements 32 points, 655 at HL including 6 in HL Mathematics or Physics, with both subjects being taken at HL
3 years	F52Y	Foundation - FFX0				ESL requirements 6.0 overall, 5.5 in all components
MSci (Hons) Astrophysics			UCAS code F523	Website qmul.ac.uk/F523		
Duration ¹	Year Abroad	Related courses			A-level requirements² AAB including A or above in both Mathematics and Physics	IB requirements 34 points, 665 at HL, including a minimum of 6 in both HL Mathematics and HL Physics
4 years	F52A	-				ESL requirements 6.0 overall, 5.5 in all components
BSc (Hons) Physics			UCAS code F300	Website qmul.ac.uk/F300		
Duration ¹	Year Abroad	Related courses			A-level requirements² ABB including A or above in at least one of Mathematics and Physics. Both subjects are required	IB requirements 32 points, 655 at HL including 6 in HL Mathematics or Physics, with both subjects being taken at HL
3 years	F302	Foundation - FFX0; Professional Placement - F306				ESL requirements 6.0 overall, 5.5 in all components
MSci (Hons) Physics			UCAS code F303	Website qmul.ac.uk/F303		
Duration ¹	Year Abroad	Related courses			A-level requirements² AAB including A or above in both Mathematics and Physics	IB requirements 34 points, 665 at HL including a minimum of 6 in both HL Mathematics and HL Physics
4 years	F301	Professional Placement - F307				ESL requirements 6.0 overall, 5.5 in all components
BSc (Hons) Physics with Data Science			UCAS code F30S	Website qmul.ac.uk/F30S		
Duration ¹	Year Abroad	Related courses			A-level requirements² ABB including A or above in at least one of Mathematics and Physics. Both subjects are required	IB requirements 32 points, 655 at HL including 6 in HL Mathematics or Physics, with both subjects being taken at HL
3 years	-	Foundation - FFX0				ESL requirements 6.0 overall, 5.5 in all components
MSci (Hons) Physics with Data Science			UCAS code F30T	Website qmul.ac.uk/F30T		
Duration ¹	Year Abroad	Related courses			A-level requirements² AAB including A or above in both Mathematics and Physics	IB requirements 34 points, 665 at HL including a minimum of 6 in both HL Mathematics and HL Physics
4 years	-	-				ESL requirements 6.0 overall, 5.5 in all components
Politics and International Relations						
BSc (Econ)(Hons) Economics and International Relations			UCAS code L2L1	Website qmul.ac.uk/L2L1		
Duration ¹	Year Abroad	Related courses			A-level requirements² AAA including Mathematics	IB requirements 36 points, 666 at HL. This must include a minimum of 6 in SL Mathematics, if not being studied at HL. Excludes Maths Studies
3 years	L2LY	Year in Industry - L1L9				ESL requirements 7.0 overall, 6.5 in W, 5.5 in R, L, S

BSc (Econ)(Hons) Economics and International Relations with Integrated Foundation Year			UCAS code L2LF	Website qmul.ac.uk/L2LF		
Duration¹ 4 years	Year Abroad L2LX	Related courses Year in Industry - LL18	For full details of the entry requirements, please visit qmul.ac.uk/L2LF			
BSc (Econ)(Hons) Economics and Politics			UCAS code LL12	Website qmul.ac.uk/LL12		
Duration¹ 3 years	Year Abroad LL2Y	Related courses Year in Industry - LL19	A-level requirements² AAA including Mathematics. Excludes Use of Mathematics	IB requirements 36 points, 666 at HL, including 6 in SL Mathematics, if not being studied at HL. Excludes Maths Studies	ESL requirements 6.5 overall, 6.0 in W, 5.5 in R, L, S	
BSc (Econ)(Hons) Economics and Politics with Integrated Foundation Year			UCAS code LL2F	Website qmul.ac.uk/LL2F		
Duration¹ 4 years	Year Abroad LL2X	Related courses Year in Industry - LL18	For full details of the entry requirements, please visit qmul.ac.uk/LL2F			
BA (Hons) French and Politics			UCAS code LR21	Website qmul.ac.uk/LR21		
Duration 4 years	Year Abroad Yes	Related courses -	A-level requirements² ABB, including at least one essay-based subject in humanities or social sciences	IB requirements 32 points, 655 at HL including an essay-based humanities or social sciences subject	ESL requirements 7.0 overall, 7.0 in W, 5.5 in R, L, S	
BA (Hons) German and Politics			UCAS code LR22	Website qmul.ac.uk/LR22		
Duration 4 years	Year Abroad Yes	Related courses -	A-level requirements² ABB, including at least one essay-based subject in humanities or social sciences	IB requirements 32 points, 655 at HL including an essay-based humanities or social sciences subject	ESL requirements 7.0 overall, 7.0 in W, 5.5 in R, L, S	
BA (Hons) Hispanic Studies and Politics			UCAS code LR24	Website qmul.ac.uk/LR24		
Duration 4 years	Year Abroad Yes	Related courses -	A-level requirements² ABB, including at least one essay-based subject in humanities or social sciences	IB requirements 32 points, 655 at HL including an essay-based humanities or social sciences subject	ESL requirements 7.0 overall, 7.0 in W, 5.5 in R, L, S	
BA (Hons) History and International Relations			UCAS code VL01	Website qmul.ac.uk/VL01		
Duration¹ 3 years	Year Abroad VL02	Related courses -	A-level requirements² ABB	IB requirements 32 points, 655 at HL	ESL requirements 7.0 overall, 6.5 in W, 5.5 in R, L, S	
BA (Hons) History and Politics			UCAS code LV21	Website qmul.ac.uk/LV21		
Duration¹ 3 years	Year Abroad LV20	Related courses -	A-level requirements² ABB	IB requirements 32 points, 655 at HL	ESL requirements 7.0 overall, 6.5 in W, 5.5 in R, L, S	
BA (Hons) International Relations			UCAS code L250	Website qmul.ac.uk/L250		
Duration¹ 3 years	Year Abroad L25Y	Related courses Foundation - FFX0	A-level requirements² ABB (AAB for the Year Abroad option)	IB requirements 32 points, 655 at HL (34 points, 665 at HL for the Year Abroad option)	ESL requirements 7.0 overall, 6.5 in W, 5.5 in R, L, S	
BA (Hons) International Relations with Business Management			UCAS code L25N	Website qmul.ac.uk/L25N		
Duration¹ 3 years	Year Abroad L2NA	Related courses -	A-level requirements² ABB (AAB for the Year Abroad option)	IB requirements 32 points, 655 at HL (34 points, 665 at HL for the Year Abroad option)	ESL requirements 7.0 overall, 6.5 in W, 5.5 in R, L, S	
LLB (Hons) Law and Politics			UCAS code ML13	Website qmul.ac.uk/ML13		
Duration¹ 3 years	Year Abroad -	Related courses -	A-level requirements² A*AA	IB requirements 36 points overall, 666 at HL	ESL requirements 7.0 overall, 6.5 in W, 5.5 in R, L, S	
BA (Hons) Politics			UCAS code L202	Website qmul.ac.uk/L202		
Duration¹ 3 years	Year Abroad L20Y	Related courses -	A-level requirements² ABB (AAB for the Year Abroad option)	IB requirements 32 points, 655 at HL (34 points, 665 at HL for the Year Abroad option)	ESL requirements 7.0 overall, 6.5 in W, 5.5 in R, L, S	
BA (Hons) Politics and International Relations			UCAS code L240	Website qmul.ac.uk/L240		
Duration¹ 3 years	Year Abroad L24Y	Related courses -	A-level requirements² ABB (AAB for the Year Abroad option)	IB requirements 32 points, 655 at HL (34 points, 665 at HL for the Year Abroad option)	ESL requirements 7.0 overall, 6.5 in W, 5.5 in R, L, S	

BA (Hons) Politics and Sociology			UCAS code L2L3	Website qmul.ac.uk/L2L3		
Duration¹ 3 years	Year Abroad L23L	Related courses -		A-level requirements² ABB (AAB for the Year Abroad option)	IB requirements 32 points, 655 at HL (34 points, 665 at HL for the Year Abroad option)	ESL requirements 7.0 overall, 6.5 in W, 5.5 in R, L, S
BA (Hons) Politics with Business Management			UCAS code L2NF	Website qmul.ac.uk/L2NF		
Duration¹ 3 years	Year Abroad L2NY	Related courses -		A-level requirements² ABB (AAB for the Year Abroad option)	IB requirements 32 points, 655 at HL (34 points, 665 at HL for the Year Abroad option)	ESL requirements 7.0 overall, 6.5 in W, 5.5 in R, L, S
BA (Hons) Russian and Politics			UCAS code RL72	Website qmul.ac.uk/RL72		
Duration 4 years	Year Abroad Yes	Related courses -		A-level requirements² ABB, including at least one essay-based subject in humanities or social sciences	IB requirements 32 points, 655 at HL including an essay-based humanities or social sciences subject	ESL requirements 7.0 overall, 7.0 in W, 5.5 in R, L, S
Psychology						
BSc (Hons) Psychology			UCAS code C800	Website qmul.ac.uk/C800		
Duration¹ 3 years	Year Abroad C80Y	Related courses Foundation - CCX2		A-level requirements² AAA including at least one of the following: Biology, Chemistry, Maths, Further Maths, Physics or Psychology	IB requirements 36 points overall, 666 at HL including at least one of the following: Biology, Chemistry, Maths, Further Maths, Physics or Psychology	ESL requirements 6.5 overall, 6.0 in W, 5.5 in R, L, S

*Programme subject to approval.

¹Programmes with an integrated foundation year, year abroad or industrial/professional experience option will be one year longer in duration. Please note that programmes that include a modern foreign language or the Language and Culture theme on the BA Liberal Arts will require a year abroad.

²General Studies and Critical Thinking A-levels are not accepted as part of our entry requirements.



Take your first steps

**The Wolfson Institute
of Population Health**
A world-leading centre of
applied health sciences

**The William Harvey
Research Institute**
One of Europe's largest
pharmacological research
institutes

Dawson Hall
Accommodation for
medical and dental
students

In this chapter:

- 132 How to apply
- 134 Contextual admissions
- 135 Degree apprenticeships
- 136 Student finance, bursaries and support
- 138 International student admissions
- 140 Cara's story
- 142 Terms and conditions



Charterhouse Square

How to apply



The dates here refer to courses starting in September 2024. The information provided below is correct as of March 2023.
Scan for the most up-to-date details about the Universities and Colleges Admissions Service (UCAS) dates.



March – October Do your research

- Choose your degree programme, check the entry requirements and find out about upcoming in-person and online Open Days:
qmul.ac.uk/undergraduate
- You can also speak to current Queen Mary students online:
qmul.ac.uk/unibuddy
- Book a place on our regular campus tours:
qmul.ac.uk/campustours
- Prepare your UCAS application.
- Register your UCAS account:
ucas.com/apply
- Write your personal statement.
- Organise your academic reference.



September – June Make your application

- Submit your application from early September:
ucas.com
- Queen Mary's code is Q50
- 16 October 2023**
Medicine and Dentistry application deadline: qmul.ac.uk/smd
- 31 January 2024**
- UCAS application deadline. Some courses may close after this date.
- 30 June 2024:**
Final UCAS application deadline. Applications after this date go into Clearing. (Please note that not all programmes will go into Clearing.)



January – June Accept your offer

- If you apply by 31 January 2024, you should get a decision by mid-May.
- Decide your firm and insurance choices on UCAS by early June. It's always a good idea to confirm as soon as possible and not wait until June.
- If you apply after 31 January 2024, you will have a later deadline to respond to your offer.
- Check ucas.com/dashboard for deadlines.
- Once you have firmly accepted your offer, you can apply for accommodation:
residences.qmul.ac.uk
- We will write to you after you have accepted your offer to advise you on your next steps.

March to October

- Research courses and attend an Open Day.
- Create a university and course shortlist and write your personal statement.
- Research bursaries and scholarships.

16 – 17 June

Undergraduate Open Days

5 September

UCAS applications open

7 October

Undergraduate Open Day



June to October

Medicine/dentistry – take the UCAT

16 October

Application deadline for medicine and dental courses (UCAS only)

November to May

Look out for a decision from Queen Mary between these dates.



31 January

Application deadline for the majority of Queen Mary courses

Applying for housing

See our website for further details

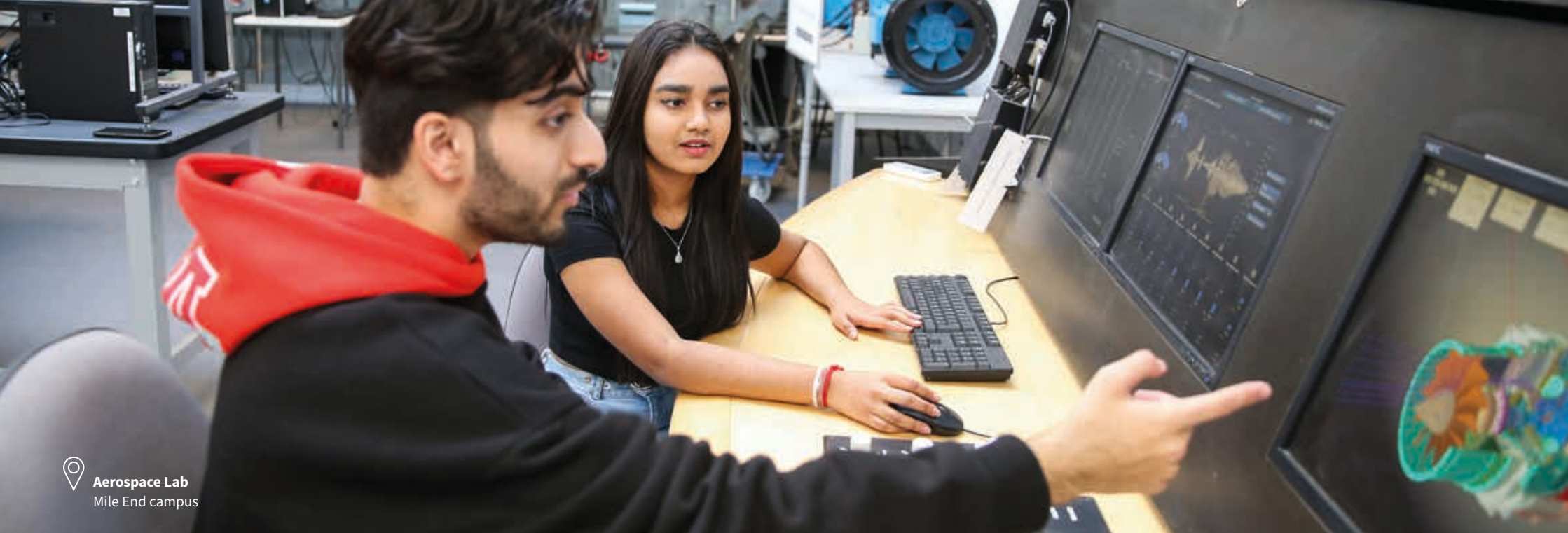
30 June


Final UCAS application deadline

Learn more



How to apply to Queen Mary



 **Aerospace Lab**
Mile End campus

Contextual admissions

At Queen Mary, our mission is to create a truly inclusive environment where we support talented students regardless of their background or personal experience. We recognise that your individual educational experience and context can impact on the grades you achieve and your opportunity to participate in extra-curricular activities.

By using contextual data, we can take this information into account to form a complete view of your potential when we assess your application to study with us.

This means you may receive a contextual offer, which offers a grade reduction below the standard entry requirements for the course.

This is part of Queen Mary's commitment to opening the doors of opportunity and welcoming students from all backgrounds.

We might also make you a standard offer even if your academic record would normally have meant you didn't meet the threshold used to decide who receives an offer.

Learn more



Contextual admissions



Applying to University – resources, webinars and events

Degree apprenticeships

Degree apprenticeships allow you to study towards a full undergraduate degree at Queen Mary, taking on zero tuition fee debt and gaining up to four years' work experience, all while earning a salary. You study on campus but keep working for the company that sponsors you, and undertake work-based assessments. Degree Apprentices are employees of their sponsoring companies.

We currently offer the following degree apprenticeship programmes at undergraduate level:

- BSc (Econ)(Hons) Applied Finance
- BSc (Hons) Accountancy (in collaboration with PwC and ICAEW)
- BSc (Hons) Business Management for Social Change
- BSc (Hons) Digital and Technology Solutions (Data Analyst)

- BSc (Hons) Digital and Technology Solutions (Software Engineer)

You normally apply directly to an employer or through the National Apprenticeship Service. However, applications for the BSc (Hons) Digital and Technology Solutions (Data Analyst) are made through UCAS. Full details can be found on our website.

Learn more



Degree apprenticeships

Student finance, bursaries and support

The information in this section is correct as of January 2023. For the latest information, please use the QR codes on the next page.

Tuition fees

Queen Mary's rate of tuition fee for UK students starting their course in 2023/24 is £9,250, in line with the Government's policy. Tuition may increase depending on inflation and government policy. Any changes to University fees will be published for individual courses online via the undergraduate course finder.

Most UK students are eligible for the Government's student finance tuition fee loan. If you choose to access it, you do not have to pay your tuition fees upfront.

If you choose to pay your tuition fees upfront, it's important to understand when your payments are due – our tuition fee webpage explains this.

UK Government student finance

The Government's student finance package includes:

- Tuition fee loans (for covering the cost of UK-based university tuition. This is not income-assessed)
- Maintenance loans (to help with the cost of living. This is partly income-assessed)
- Supplementary grants (for students with particular circumstances or needs).

It is advisable to apply as early as possible to Student Finance England (or the equivalent in Wales, Scotland or Northern Ireland), who will determine your eligibility.

International tuition fees

For information about fees and finance for international students, please see page 138.

Scholarships and bursaries

UK students receive the Queen Mary Bursary if they are eligible for Government Student Finance living cost support and have a household income of less than £35,000 per year. 40 per cent of our UK students receive this bursary. The amount of the bursary you receive each year will depend on your household income.

You don't need to apply separately for the bursary as long as you have applied to your regional student authority for income-assessed UK government financial support.

We also provide a generous package of scholarships for home and international students. Full details are available on our website.

Advice and support

The Advice and Counselling Service provides individual,

confidential advice about your eligibility for funding, planning your budget, applying for student finance, and other financial and practical issues. You can contact us at any time before starting your course, and throughout your studies. We particularly encourage care experienced students and students who do not have family contact (estranged) to contact us before starting their course.

Financial Assistance Fund

The Financial Assistance Fund can help any student with living costs and unexpected financial emergencies. You do not have to repay an award from the Fund.

Applications will be carefully assessed and means-tested to help eligible students through financial hardship.

Living costs

If you need help budgeting as a student, we are here to provide support and guidance on managing and saving money and finding part-time jobs that fit around your studies. Find out more by visiting our Money and Practical Advice webpages or speaking to one of our Advisors.



Bancroft Building
Mile End campus

Learn more



Student funding and finance



Money and practical advice



Tuition fees



Scholarships and funding

International student admissions

With more than 170 nationalities on our campuses, Queen Mary is proud to welcome students from all over the world.

We're here to help you at every stage of your application. After accepting your offer from Queen Mary, you'll receive communications from us about applying for your accommodation and preparing for life in London.

Once you've met your offer conditions and your offer status is changed to 'unconditional', we will provide information about applying for a visa, if needed. This normally happens up to three months before you are due to start your programme.

Entry qualifications

We consider many different qualifications for entry. You can find out if the qualifications you are taking will be considered (including our English language requirements) on our country-specific admissions webpages.

Making an application

Undergraduate applications will need to be made via UCAS, through which you can apply for up to five degree programmes. Applications to the International

Foundation Year applications can be made via UCAS for the integrated four-year option, or directly to Queen Mary for the standalone Foundation Year.

International funding and finance

Tuition fees

Most international students pay overseas tuition fees. You can find out about tuition fee status and which rate you'll need to pay on our international students' webpages.

Student visa application

Most international students will need to apply for student immigration permission to study in the UK. You can apply for your student visa up to six months before your course start date, from the country where you are living. You can also prepare your supporting documents in advance, including evidence of your funds if required. Our guide to applying for student immigration permission explains what you need to complete and the required format of the evidence of your funds.

Scholarships and bursaries

We understand that studying at university – especially in another country – is a big investment personally and financially. We also believe that education is for everyone, which is why we offer a variety of scholarships and bursaries to help the brightest undergraduate students join Queen Mary. You can search by country and academic school on our website.

Before you arrive

We are on hand to speak with students both pre- and post-application. The team provides weekly communications with offer holders over the spring and summer, while also delivering in-person and virtual pre-departure briefings to London-bound students, an airport collection service, and our International Welcome Programme.

We also offer advice about accommodation, scholarships, funding and English language requirements.

1

Once we've confirmed your personal and study details, we'll release your Certificate of Acceptance of Study (CAS). You'll need to write your CAS number on your visa application form.

2

Visas typically take four weeks to be issued, though timings vary country by country.

3

Once your visa is secured, start looking at flights to London and preparing for your studies.

4

Enrol online and arrive in London in September to join Welcome Week and your academic induction programme.

Learn more



International students webpages



Country-specific admissions information




Scholarships and bursaries



Applying for student immigration permission





Cara Fox

BEng Mechanical Engineering,
3rd year

For **Cara**, Queen Mary offered a campus community in the heart of London.

A native Londoner, Cara felt drawn to Queen Mary's campus set-up and what it offered her. "Everything I needed to do, everywhere I needed to be, and everyone I wanted to meet was in one place." Queen Mary had been her insurance choice but Cara says, "I literally cannot imagine going anywhere else now."

With an emphasis on practical work and the chance to prepare for a career in industry, Cara's programme was perfect for her, and extra-curricular opportunities have only enhanced classroom life further. "I'm part of one of the biggest engineering societies on campus, where we get to design and build a race car. Even though all the academic stuff is great and really fun, the societies are the best part!"

Studying at Queen Mary has allowed Cara to meet people from all walks of life, something she says makes it a unique place. "There's such a sense of variety of people here. It's a really special opportunity."

The level of support has made an impression on her too. "I get so much support from the academic staff. Everyone here is ready to talk, there are so many bursaries and scholarships you can apply for. If you need help, there's someone here for it."

Although adapting to the workload was challenging, it's all been worthwhile. "The passion that everyone here has for their subject has really pushed me through. I love engineering. It's the perfect mixture of scientific principles and applying them in an artistic way to create a solution to a world problem."

Terms and conditions

1. Rules and regulations

The offer of, and acceptance of, a place at Queen Mary University of London (“Queen Mary”) is made on the understanding that you agree to our terms and conditions (qmul.ac.uk/prospective/termsandconditions). These cover, among other things, compliance with our Academic Regulations and related policies, payment of fees, attendance at classes, submission of work, attendance at examinations, student discipline, complaints procedure, freedom of speech and equal opportunities policies. To read the Academic Regulations and related policies, visit arcs.qmul.ac.uk/policy

2. Changes to our programmes

We will aim to deliver your programme so that it closely matches the way it has been described to you by Queen Mary, especially at the point that you accept your offer. However, it is important to understand that there are circumstances in which we may subsequently change aspects of your programme. Our programmes are delivered within a dynamic, academic community by staff who are actively engaged in research. In this context, we might make changes so that our students can learn from the latest academic research. We also value student feedback and provide regular opportunities for our students to comment on the

content of their programme.

We may therefore alter your programme in response to this dialogue with current students. Other circumstances which can lead to changes include: staff changes, which can lead to new modules being offered, modules being withdrawn, or a change to who teaches the programme; changes made in response to new requirements from external professional or statutory bodies; or changes to the way in which universities are funded, which might lead to changes in the availability of some student services, for example. In the unlikely event that we discontinue a programme of study, or change it significantly before it begins, we will inform applicants holding an offer of a place at the earliest opportunity, and will endeavour to offer a suitable alternative programme at Queen Mary. We will also ensure that these changes are reflected on our website as soon as possible.

3. Liability for damage to person or property

Queen Mary does not accept any responsibility or liability for any loss and/or damage to:

- (a) your property, students' and/or visitors' property and/or
- (b) any transfer of computer viruses to your equipment, students' and/or visitors' equipment unless caused by Queen Mary's negligence.

- (c) Neither does Queen Mary accept any responsibility or liability for personal injury to you, students and/or visitors caused by their misuse or unauthorised use of Queen Mary equipment, while they are on Queen Mary premises, or engaged in Queen Mary activities.

4. Personal Data

Queen Mary will receive personal data from you in various ways when you submit your application for one of our programmes. This may include special category or criminal convictions data under data protection legislation (the General Data Protection Regulations (Regulation (EU) 2016/679) as implemented by the Data Protection Act 2018 (as amended)).

- 4.1 Your personal data (including any special category personal data) will be held by Queen Mary and may be used by Queen Mary to enable it to fulfil its responsibilities to you.

5. Accuracy of information

Queen Mary has made reasonable efforts to ensure that the information provided in this prospectus is both helpful and accurate at the time of going to print. However, this information is subject to change over time. For this reason, it is important that you check our website for

the most up-to-date information (qmul.ac.uk) or contact us using the details contained within this document.

- 5.1 Applicants are strongly advised to check the course finder on the Queen Mary website for up-to-date entry requirements before submitting their application qmul.ac.uk/undergraduate/coursefinder

- 5.2 You can read our terms and conditions in full at qmul.ac.uk/prospective/termsandconditions

6. Graduate destinations

All information on graduate destinations has been reported by our graduates to their School or Institute after graduation. These sections of the prospectus relate mainly to our graduates from 2021 onwards.

7. This prospectus

This prospectus was manufactured using UPM Fine Offset sourced from an ISO 14001 certified mill, where the pulp was bleached using an Elemental Chlorine Free process. The materials followed a Chain-of-Custody scheme, made of materials from well-managed, FSC®-certified forests and other controlled sources.



Find out more at
our **Open Events**

Book your place at qmul.ac.uk/undergraduate/opensday

 @officialqmul

 Queen Mary University of London

 @QMUL

 @QMUL

 QMULofficial



Queen Mary
University of London

**RUSSELL
GROUP**