

# QUEEN MARY

# ACCOMMODATION



Queen Mary  
University of London

[QMUL.AC.UK/RESIDENCES](https://www.qmul.ac.uk/residences)

2025-26



# QUEEN MARY UNIVERSITY OF LONDON RESIDENCES

Queen Mary University of London currently has approximately 3,300 bed spaces in mixed sex self-catering residences on or near the Mile End Campus for students studying non-medical disciplines.

The Faculty of Medicine and Dentistry (and some joint programmes) have their own dedicated halls of residence with 155 places at the Whitechapel Campus (Foyer House) and 203 places at the

Charterhouse Square Campus (Dawson Hall) and therefore ineligible to be housed at the Mile End Campus.

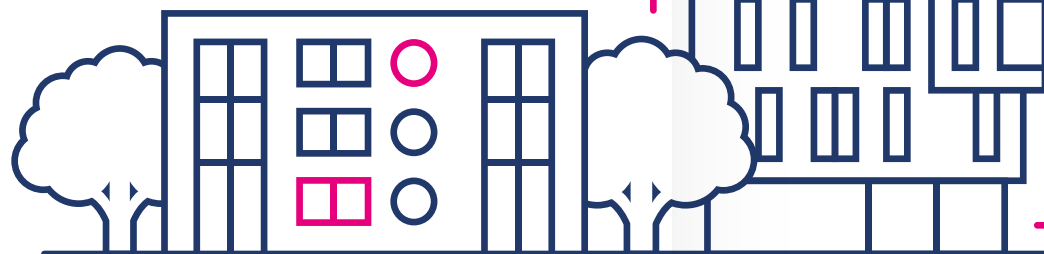
**i** For further information on the options for both undergraduates and postgraduates including virtual tours of each hall, go to: [www.qmul.ac.uk/residences](http://www.qmul.ac.uk/residences) Comprehensive information regarding alternative housing options can also be found here.

## QUEEN MARY RESIDENCES HAVE A RANGE OF HOUSING OPTIONS TO SUIT EVERYONE, FROM STANDARD NON EN-SUITES, A RANGE OF EN-SUITES AND A LIMITED NUMBER OF STUDIOS (FOR POSTGRADUATES), TWIN ROOMS FOR COUPLES AND FAMILY ACCOMMODATION.

- » Bedrooms are carpeted or have laminate flooring with a bed (either single or small double), wardrobe, desk and chair, as well as storage space and bookshelves.
- » All rooms are heated and have Wi-Fi.
- » There are communal kitchens and dining areas for between 3–11 students, fully equipped with fridge/freezers, cookers, microwave ovens, washing up facilities, storage cupboards and food preparation surfaces. Studios have a personal integral kitchen and seating area.
- » Launderettes are situated in, or close to, all the residences.
- » Single sex accommodation is only available in residences with shared bathroom facilities, or in a limited number of postgraduate en-suite flats.

- » There are 14 en-suite bedrooms specifically designed for wheelchair users at Mile End.
- » We have a very limited number of twin rooms for couples and family flats for students with children (you do not have to be married to apply for these).

Residents are required to provide their own bed linen, towels, crockery, cutlery and cooking utensils.



## THE COST

Residential Fees are for a minimum of 268 days (38.3 weeks) and include the Christmas and Easter vacation (residents at Aspire Point, Blithehale Court and Sherren House will receive a licence for 51 weeks).

Prices are reviewed annually. The guide prices below reflect the majority of the stock in each hall.

**i** Further information can be found at: [www.qmul.ac.uk/residences/college/fees](http://www.qmul.ac.uk/residences/college/fees)

Residential fees include all energy and water costs, the cleaning of communal areas within the residences, Wi-Fi, and personal possessions insurance.

The online housing application will ask you to select a style of housing, not a named hall, based on facilities and cost. Prices have been rounded up to the nearest £.

## ELIGIBILITY

Queen Mary residences are extremely popular, please refer to the current Housing Policy to check for eligibility, which can be found at: [www.qmul.ac.uk/residences/college/application](http://www.qmul.ac.uk/residences/college/application)

**Rooms are allocated on a 'first come, first serve' basis on date of application, so the earlier you apply the better.**

Once you accept your place to study at Queen Mary, the Admissions Office will send you login details, which you will need to apply for halls when applications open in March each year.

## FURTHER INFORMATION AND ASSISTANCE

If you have any queries please contact us by email at: [housingservices@qmul.ac.uk](mailto:housingservices@qmul.ac.uk) The answer to most queries can be found at: [www.qmul.ac.uk/residences](http://www.qmul.ac.uk/residences)

Find out more about how you can ensure your time in Queen Mary Halls is rewarding and how you'll feel connected and a part of the Queen Mary community through events and activities at: [residentiallife.qmul.ac.uk](http://residentiallife.qmul.ac.uk)

LOCATION	STYLE	FACILITIES	WEEKLY COST per person	FULL LICENCE COST per person
Undergraduate 38.3 week lets	Non En-suite/ Non En-suite Plus (small double bed)	Number sharing kitchen/dining facilities: 4–6 Bathroom facilities: Shared bathroom Private washbasin in room	£172 – £192	£6,569 – £7,334
	En-suite Economy	5–11 Private shower/WC	£209	£7,992
	En-suite Standard	4–9 Private shower/WC	£215	£8,201
Postgraduate† 51 week lets	En-suite Plus (small double bed)	4–5 Private bath/shower/WC	£219	£8,351
	Non En-suite	7 Sharing 3 showers and 3 WCs with washbasin	£201	£10,246
	En-suite Economy	3–8 Private shower/WC	£210 – £213	£10,712 – £10,869
	En-suite Standard/ En-suite Standard Plus	3–8 Private shower/WC	£234 – £242	£11,947 – £12,362
	En-suite Premium	3–7 Private shower/WC	£249	£12,695
	Studio/ Premium Studio	Exclusive use Private shower/WC	£362 – £431	£18,477 – £22,000
Dawson Hall (FMD only)	Non En-suite/ Non En-suite Plus	5–14 Shared bathroom Private washbasins in 50% of rooms (Plus)	£186 – £189	£7,102 – £7,226
Foyer House*† (FMD only)	Non En-suite	4–11 Shared bathroom Private washbasin in majority of rooms	£188 – £200	£7,161 – £7,630

\* Foyer House will currently remain fully operational for the academic year 2025–26. At the present time the University expects the building to be taken out of use during the following academic year 2026–27, to allow for the site to be redeveloped.

The University will not offer rooms in the building, for the academic year 2026–27, unless it is clear that redevelopment work will not commence until summer 2027. The University are currently exploring options to secure alternative accommodation for new medical and dental students arriving in 2026–27.

† Prices cover a range of rooms with varying room sizes and views, these are determined by the residential building. More information can be found on our website.

# QMUL.AC.UK/RESIDENCES

## Housing Services

Estates and Facilities Directorate  
Queen Mary University of London  
Mile End Road  
London E1 4NS

**email:** [housingservices@qmul.ac.uk](mailto:housingservices@qmul.ac.uk)

## NOTES



 [QMRESLIFE](#)

 [@QMHOUSING.BSKY.SOCIAL](#)